

Fundamentals of Neutron Diffraction

Norm Berk

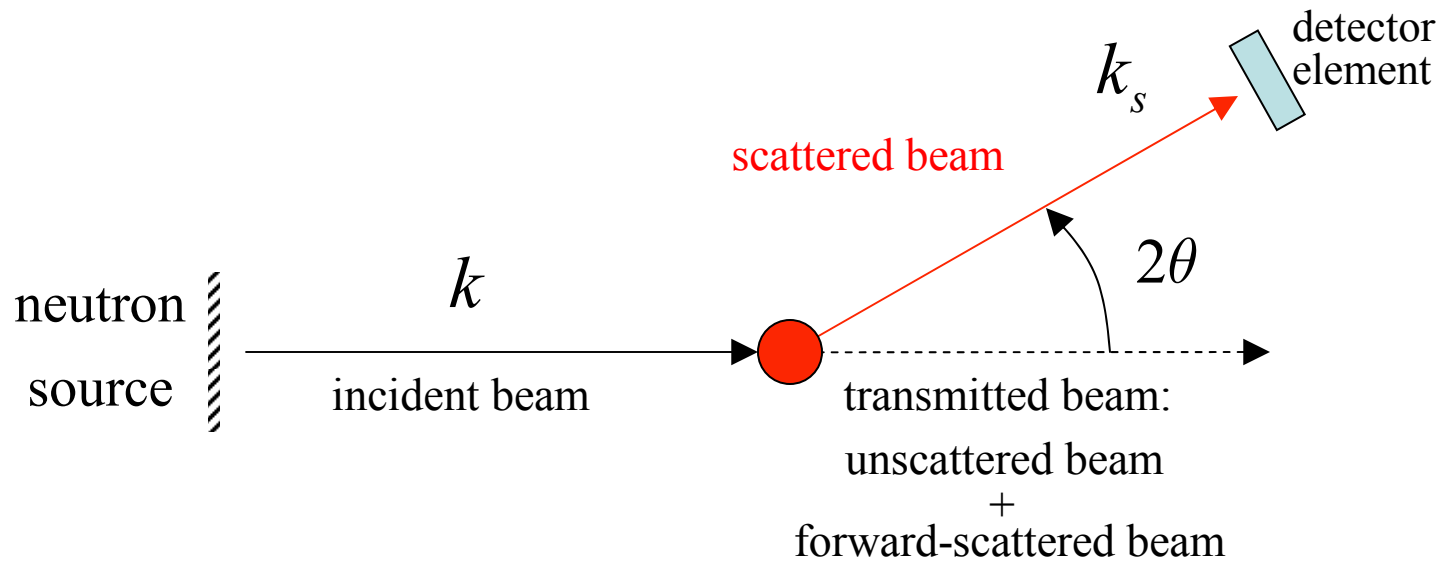
NCNR Summer School

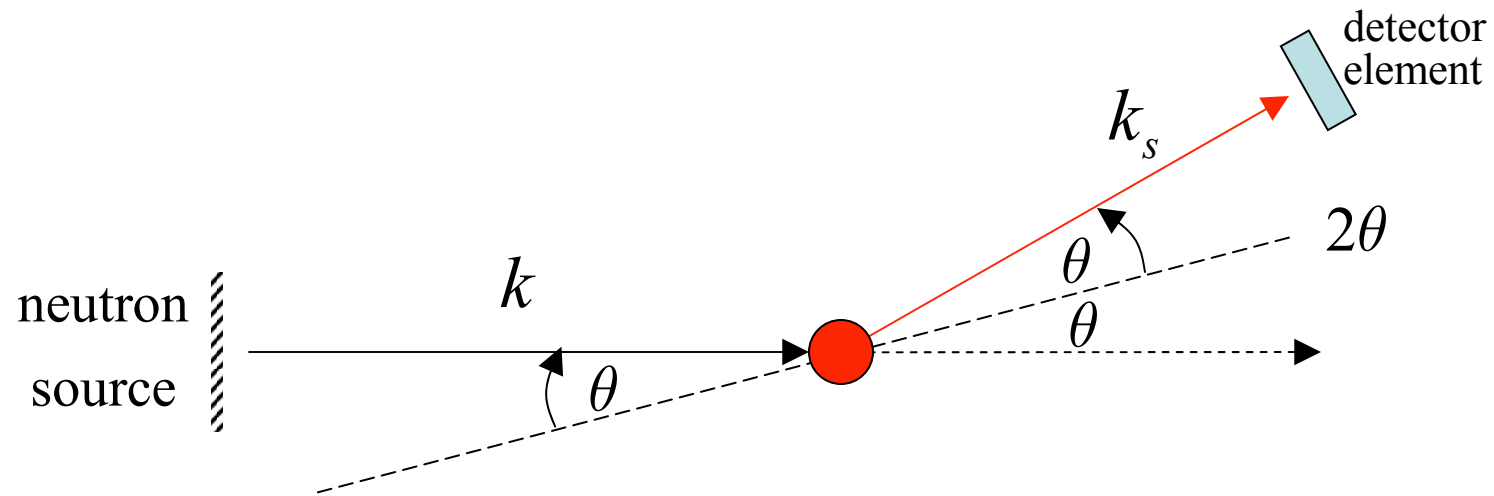
June 26, 2006

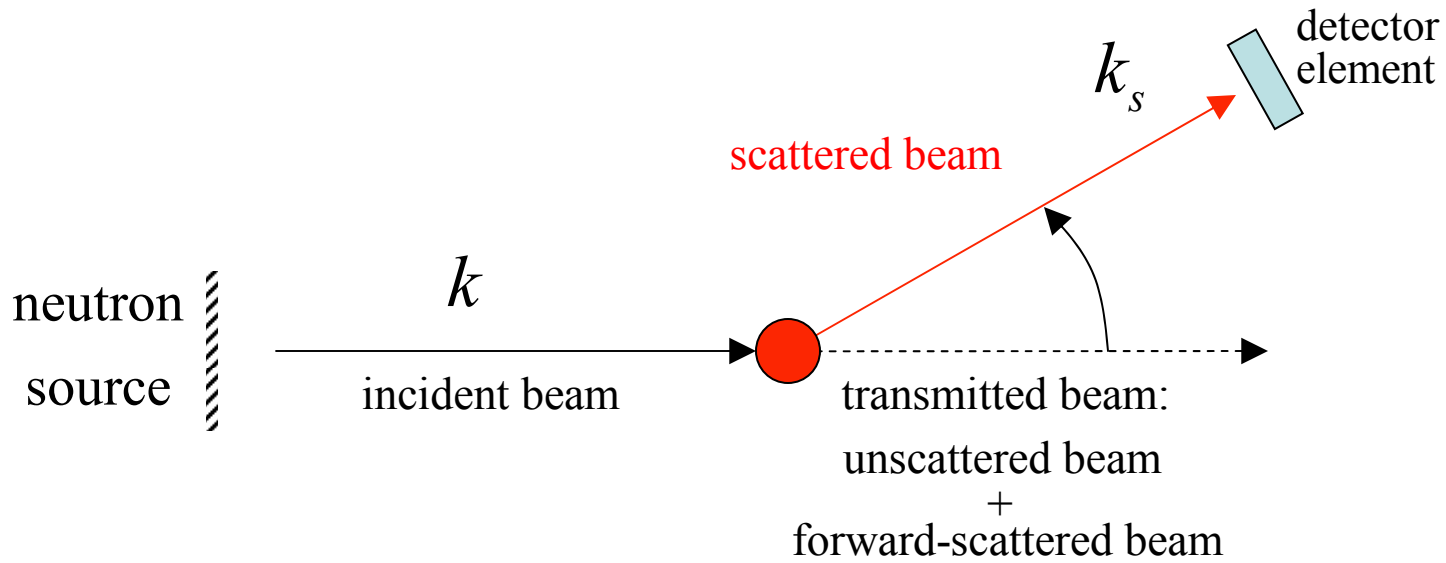
nberk@nist.gov

Basic Scattering Theory

SANS



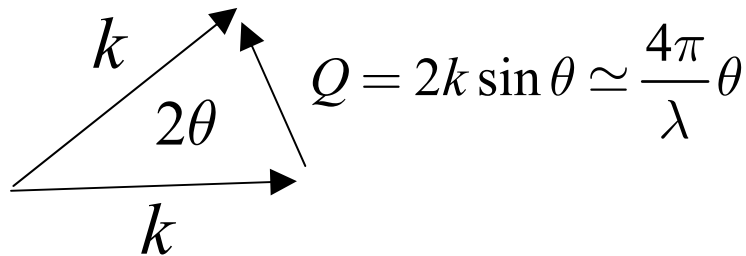




Elastic scattering

$$k_s = k = \frac{2\pi}{\lambda}$$

$$\mathbf{Q} = \mathbf{k}_s - \mathbf{k}$$



Shrödinger Equation

$$-\frac{\hbar^2}{2m} \nabla^2 \psi(\mathbf{k}, \mathbf{r}) + V(\mathbf{r})\psi(\mathbf{k}, \mathbf{r}) = \frac{\hbar^2 k^2}{2m} \psi(\mathbf{k}, \mathbf{r})$$

$$V(\mathbf{r}) = \frac{2\pi\hbar^2}{m} \sum_i b_i \delta(\mathbf{r} - \mathbf{R}_i) + g\boldsymbol{\mu} \cdot \mathbf{B}(\mathbf{r})$$

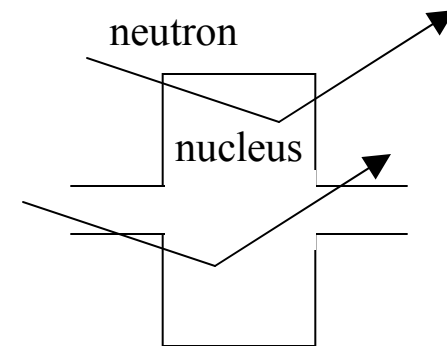
nuclear interaction:
Fermi "contact"

magnetic interaction:
nucleus spin
electron spins

b_i = Fermi scattering length

sum over all nucleii at positions \mathbf{R}_i

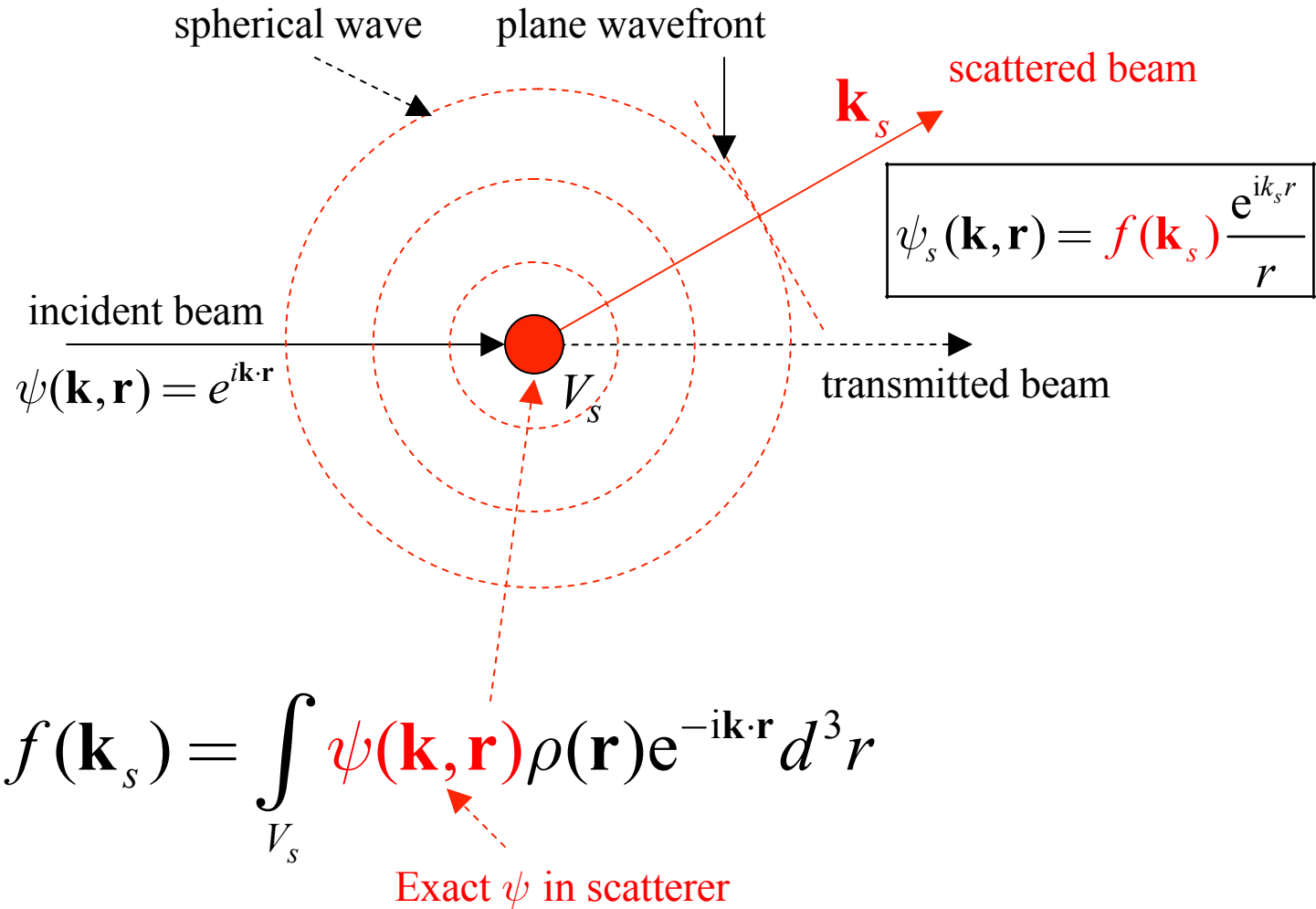
$$b_i = \begin{cases} \text{positive (repulsive interaction)} \\ \text{negative (attractive interaction)} \end{cases}$$



$$\frac{\hbar^2}{2m} \left[-\nabla^2 \psi(\mathbf{k}, \mathbf{r}) + 4\pi\rho(\mathbf{r})\psi(\mathbf{k}, \mathbf{r}) = k^2\psi(\mathbf{k}, \mathbf{r}) \right]$$
$$-\nabla^2 \psi(\mathbf{k}, \mathbf{r}) + 4\pi\rho(\mathbf{r})\psi(\mathbf{k}, \mathbf{r}) = k^2\psi(\mathbf{k}, \mathbf{r})$$

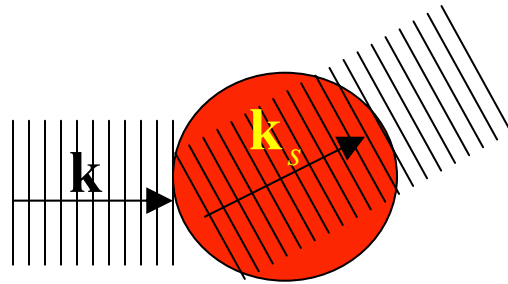
$$\rho(\mathbf{r}) = \sum_i b_i \delta(\mathbf{r} - \mathbf{R}_i) = \text{scattering length density (SLD)}$$
$$\left[L^{-2} \right] \quad \quad \quad \left[L \right] \quad \left[L^{-3} \right]$$

$$-\nabla^2\psi(\mathbf{k},\mathbf{r}) + 4\pi\rho(\mathbf{r})\psi(\mathbf{k},\mathbf{r}) = k^2\psi(\mathbf{k},\mathbf{r})$$



$$f(\mathbf{k}_s) = \int_{V_s} \psi(\mathbf{k}, \mathbf{r}) \rho(\mathbf{r}) e^{-i\mathbf{k} \cdot \mathbf{r}} d^3 r$$

Born approximation ("Kinematic theory")

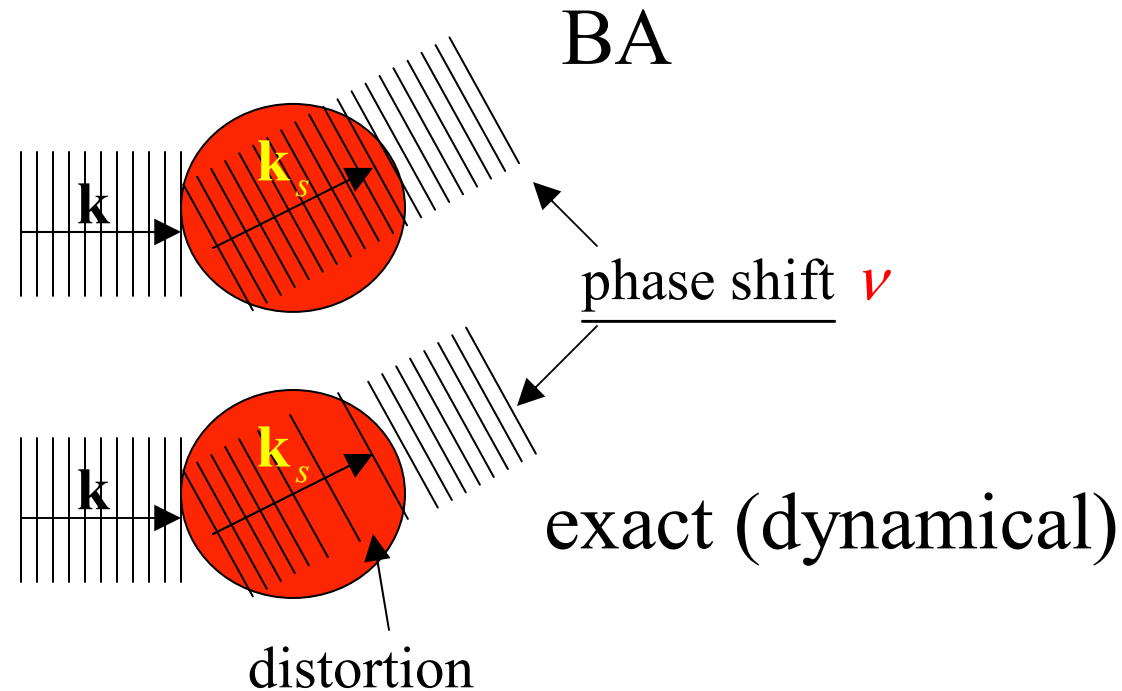


$$\psi(\mathbf{k}, \mathbf{r}) \approx e^{i\mathbf{k}_s \cdot \mathbf{r}} \text{ inside scatterer}$$

$$\therefore f(\mathbf{k}_s) \approx \int_{V_s} e^{i\mathbf{Q} \cdot \mathbf{r}} \rho(\mathbf{r}) d^3 r$$

$$= \hat{\rho}(\mathbf{Q}) = \text{FT}_{\mathbf{Q}} \rho(\mathbf{r})$$

When is the BA valid?



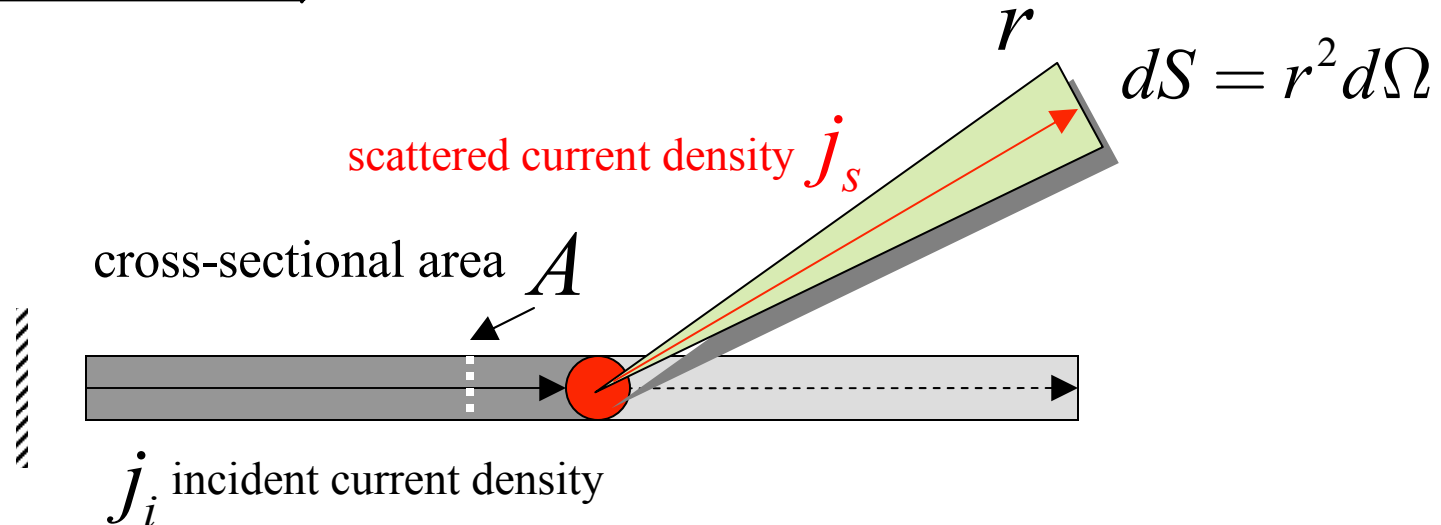
For a uniform sphere of radius R :

$$\therefore \nu_{\max} = 2R\rho\lambda = \frac{R[\mu\text{m}]\rho[10^{-4}\text{nm}^{-2}]\lambda[\text{nm}]}{5} \quad (\rho[10^{-4}\text{nm}^{-2}] = \rho[10^{-6}\text{\AA}^{-2}])$$

e.g., for representative $\rho[10^{-4}\text{nm}^{-2}]\lambda[\text{nm}] = 5 \times 1$, $\boxed{\nu_{\max} = R[\mu\text{m}]}$

BA exact as $\nu \rightarrow 0$; good for $\nu < 1$ (particles not too large)

What's measured?



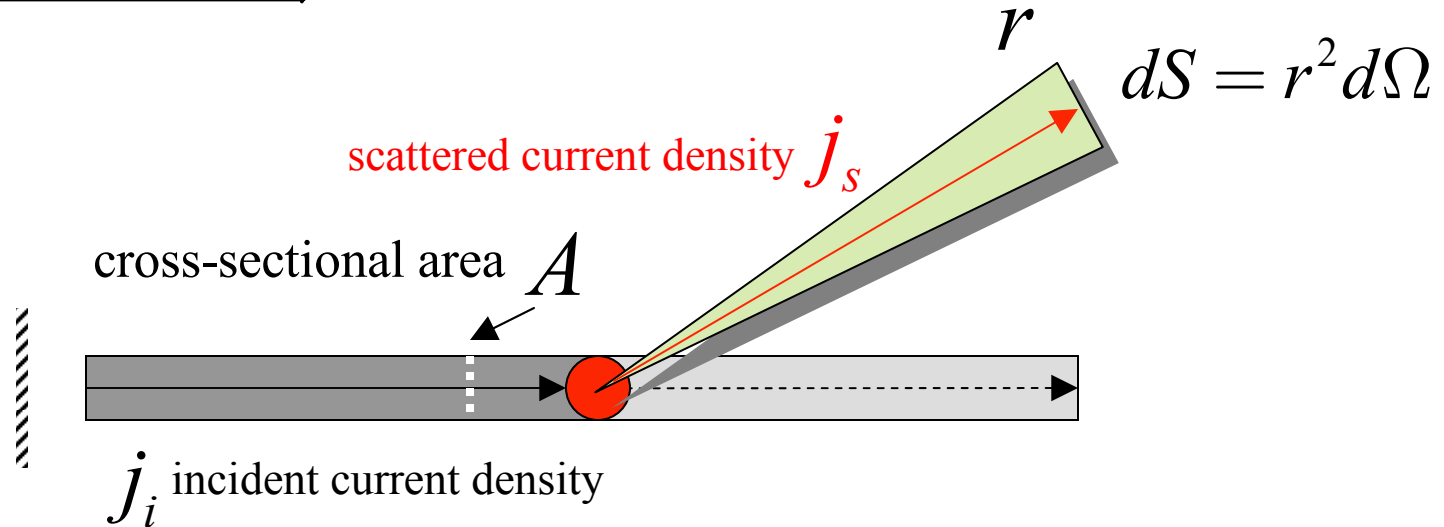
$$\text{current: } J = \frac{dN}{dt} = jA$$

$$\text{current density: } j = \frac{dN}{dt} / A = \text{"flux"}$$

Differential Cross Section : $d\sigma$

$$j_s dS = j_i d\sigma$$

What's measured?



$$\therefore d\sigma = j_s dS / j_i = \frac{dN_s}{dN_i} A$$

$$d\sigma = \frac{\partial\sigma}{\partial\Omega} d\Omega = \frac{d\sigma}{d\Omega} d\Omega$$

What's calculated?

$$j = \frac{\hbar}{2mi} [\psi^* \nabla \psi - \psi \nabla \psi^*]$$

incident: $\psi_i = e^{ikz}$, $j_i = \hbar k / m$

scattered: $\psi_s = f(\mathbf{k}_s) \frac{e^{ik_s r}}{r}$, $j_s = \frac{\hbar k_s}{m} \frac{|f(\mathbf{k}_s)|^2}{r^2}$

$$\therefore d\sigma = \frac{j_s (dS = r^2 d\Omega)}{j_i} = \frac{\cancel{k_s} r^2 |f(\mathbf{k}_s)|^2}{\cancel{k} r^2}$$

$$\frac{\partial \sigma}{\partial \Omega} = |f(\mathbf{k}_s)|^2$$

What's measured/calculated?

NOTE: we want to know $f(\mathbf{k}_s)$, since $f(\mathbf{k}_s) \approx \hat{\rho}(\mathbf{Q})$,
and then $\rho(\mathbf{r}) \approx \text{FT}^{-1} \hat{\rho}(\mathbf{Q})$;

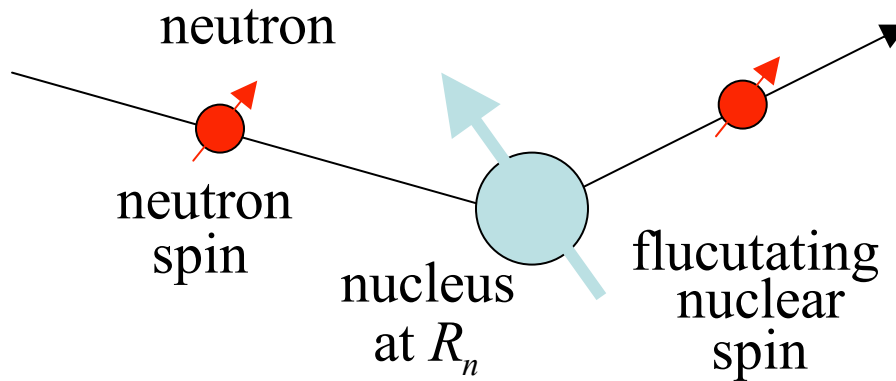
... but we directly measure $|\hat{\rho}(\mathbf{Q})|^2$.

The "phase problem": can we get $\hat{\rho}(\mathbf{Q})$ from $|\hat{\rho}(\mathbf{Q})|^2$?

$$\frac{\partial \sigma}{\partial \Omega} = |f(\mathbf{k}_s)|^2 \rightarrow \left\langle |f(\mathbf{k}_s)|^2 \right\rangle$$

thermal motions
random configurations
random orientations
spin degrees of freedom
...other uncontrolled DOF

Coherent & Incoherent Scattering



$$b_{\text{coh},n} = \langle b_n \rangle_{\text{nuc spin}} \quad \underline{\text{coherent}}$$

$$b_{\text{inc},n} = \sqrt{\langle b_n^2 \rangle_{\text{nuc spin}} - \langle b_n \rangle_{\text{nuc spin}}^2} \quad \underline{\text{incoherent}}$$

(fluctuation variance)

$$4\pi b_{\text{inc},n}^2 = \sigma_{\text{inc},n}$$

Coh/Inc Rule:

$$\langle b_m b_n \rangle = b_{\text{inc},n}^2 \delta_{m,n} + b_{\text{coh},m} b_{\text{coh},n}$$

$$\frac{\partial \sigma}{\partial \Omega} = \left\langle |f(\mathbf{k}_s)|^2 \right\rangle \rightarrow \left\langle |\hat{\rho}(\mathbf{Q})|^2 \right\rangle$$

$$= \left\langle \left| \text{FT}_{\mathbf{Q}} \sum_n b_n \delta(\mathbf{r} - \mathbf{R}_n) \right|^2 \right\rangle = \left\langle \left| \sum_n b_n e^{i\mathbf{Q} \cdot \mathbf{R}_n} \right|^2 \right\rangle \quad (\text{Rayleigh-Gans construction})$$

$$= \left\langle \sum_{m,n} \langle b_m b_n \rangle_{\text{nuc spin}} e^{i\mathbf{Q} \cdot (\mathbf{R}_m - \mathbf{R}_n)} \right\rangle = \left\langle \sum_{m,n} \left(b_{\text{inc},n}^2 \delta_{m,n} + b_{\text{coh},m} b_{\text{coh},n} \right) e^{i\mathbf{Q} \cdot (\mathbf{R}_m - \mathbf{R}_n)} \right\rangle$$

$$= \sum_n b_{\text{inc},n}^2 + \left\langle \sum_{m,n} b_{\text{coh},m} b_{\text{coh},n} e^{i\mathbf{Q} \cdot (\mathbf{R}_m - \mathbf{R}_n)} \right\rangle$$

$$\frac{\partial \sigma}{\partial \Omega} = \sum_n \frac{\sigma_{\text{inc},n}}{4\pi} + \left\langle \sum_{m,n} b_{\text{coh},m} b_{\text{coh},n} e^{i\mathbf{Q} \cdot (\mathbf{R}_m - \mathbf{R}_n)} \right\rangle$$

$$\left. \frac{\partial \sigma}{\partial \Omega} \right|_{\text{inc}}$$

$$\left. \frac{\partial \sigma}{\partial \Omega} \right|_{\text{coh}}$$

structure independent
(a major contribution
to background)

structure dependent

$\sigma_{\text{coh}} / V = \Sigma$, "macroscopic" cross-section

$$[L^2] / [L^3] \quad [L^{-1}]$$

Notation alert: $\left. \frac{\partial \sigma}{\partial \Omega} \right|_{\text{coh}} \rightarrow \frac{d\Sigma}{d\Omega}$, etc.

Isotropic scattering

... average over random orientations

$$\left. \frac{\partial \sigma}{\partial \Omega} \right|_{\text{coh}} = \left\langle \sum_{m,n} b_{\text{coh},m} b_{\text{coh},n} e^{i\mathbf{Q} \cdot (\mathbf{R}_m - \mathbf{R}_n)} \right\rangle_{\text{random orientation}}$$

$$= \left\langle \sum_{m,n} b_{\text{coh},m} b_{\text{coh},n} e^{i\mathbf{Q} \cdot (\mathbf{R}_m - \mathbf{R}_n)} \right\rangle_{\text{direction of } \mathbf{Q}}$$

↓

$$= \sum_{m,n} b_{\text{coh},m} b_{\text{coh},n} \text{sinc} \left[\frac{Q |\mathbf{R}_m - \mathbf{R}_n|}{\pi} \right]$$

$$\text{sinc}(x) = \frac{\sin(\pi x)}{\pi x} = j_0(\pi x)$$

"Fundamental Theorem of Diffraction"

1. Born Approximation

2. Convolution-product theorem:

$$(2\pi)^{-3} \int \langle |\hat{\rho}(\mathbf{Q})|^2 \rangle e^{i\mathbf{Q}\cdot\mathbf{r}} d^3\mathbf{Q} = \int_V \rho(\mathbf{r} + \mathbf{r}') \rho(\mathbf{r}') d^3r'$$

$$3. \left. \frac{\partial \sigma}{\partial \Omega} \right|_{\text{coh}} = \langle |\hat{\rho}(\mathbf{Q})|^2 \rangle = e^{i\mathbf{Q}\cdot\mathbf{r}} \Gamma(\mathbf{r}) \int_V e^{i\mathbf{Q}\cdot\mathbf{r}} \Gamma(\mathbf{r}) d^3r'$$

$$4. \Gamma(\mathbf{r}) = \int_V \langle \rho(\mathbf{r} + \mathbf{r}') \rho(\mathbf{r}') \rangle d^3r'$$

$$\Gamma(\mathbf{0}) = V \langle \rho^2 \rangle$$

$$\Gamma(\infty) = \int_V \langle \rho(\infty + \mathbf{r}') \rangle \langle \rho(\mathbf{r}') \rangle d^3r' = V \langle \rho \rangle^2$$

asymptotic independence

$$4. \Gamma(\mathbf{r}) = \int \langle \rho(\mathbf{r} + \mathbf{r}') \rho(\mathbf{r}') \rangle d^3 r'$$

$$\Gamma(0) = V \langle \rho^2 \rangle$$

$$\Gamma(\infty) = V \langle \rho \rangle^2$$

Debye-Porod correlation function

$$5. \boxed{\gamma(\mathbf{r}) = \frac{\Gamma(\mathbf{r}) - \Gamma(\infty)}{\Gamma(0) - \Gamma(\infty)}} \quad \therefore \gamma(\mathbf{r}) = \int \langle \Delta\rho(\mathbf{r} + \mathbf{r}') \Delta\rho(\mathbf{r}') \rangle d^3 r'$$

fluctuation correlation function

$$\gamma(0) = 1$$

$$\gamma(\infty) = 0$$

$$\Gamma(\mathbf{r}) = V \langle \rho \rangle^2 + V \langle (\Delta\rho)^2 \rangle \gamma(\mathbf{r}),$$

$$\langle (\Delta\rho)^2 \rangle = \langle \rho^2 \rangle - \langle \rho \rangle^2 = \underline{\text{contrast}}$$

$$3. \left. \frac{\partial \sigma}{\partial \Omega} \right|_{\text{coh}} = \int e^{i\mathbf{Q}\cdot\mathbf{r}} \Gamma(\mathbf{r}) d^3 r'$$

6. incoherent forward
 background scattering

$$\frac{\partial \sigma}{\partial \Omega} = N \langle b_{\text{inc}}^2 \rangle + (2\pi)^3 V \langle \rho_{\text{coh}}^2 \rangle \delta(\mathbf{Q})$$

$$+ V \langle (\Delta\rho)^2 \rangle \int e^{i\mathbf{Q}\cdot\mathbf{r}} \gamma(\mathbf{r}) d^3 r'$$

coherent scattering
from microstructure
(needs contrast)

In 2-phase (A-B) system: $\langle (\Delta\rho)^2 \rangle = \varphi_A \varphi_B (\rho_A - \rho_B)^2$, $\varphi_A + \varphi_B = 1$

$$\frac{\partial \sigma}{\partial \Omega} = N \langle b_{\text{inc}}^2 \rangle + (2\pi)^3 V \langle \rho_{\text{coh}}^2 \rangle \delta(\mathbf{Q}) \\ + V \langle (\Delta \rho)^2 \rangle \int e^{i\mathbf{Q}\cdot\mathbf{r}} \gamma(\mathbf{r}) d^3 r'$$

Notation alert: $\frac{\partial \sigma}{\partial \Omega} \triangleq V \langle (\Delta \rho)^2 \rangle \int e^{i\mathbf{Q}\cdot\mathbf{r}} \gamma(\mathbf{r}) d^3 r'$

$$\therefore \boxed{\frac{\partial \sigma}{\partial \Omega} = V \langle (\Delta \rho)^2 \rangle S(\mathbf{Q})}$$

where

$$S(\mathbf{Q}) = \int e^{i\mathbf{Q}\cdot\mathbf{r}} \gamma(\mathbf{r}) d^3 r' \quad \text{"scattering function"}$$

Aside: more generally:

$$S(\mathbf{Q}) = \int S(\mathbf{Q}, \omega) d\omega$$

The scattering function

$$S(\mathbf{Q}) = \int e^{i\mathbf{Q}\cdot\mathbf{r}} \gamma(\mathbf{r}) d^3 r'$$

$$\frac{1}{(2\pi)^3} \int S(\mathbf{Q}) d^3 Q = \gamma(0) = 1$$

$$\therefore \frac{1}{(2\pi)^3} \int \left. \frac{\partial \sigma(\mathbf{Q})}{\partial \Omega} \right|_{\text{coh}} d^3 Q = V \langle (\Delta\rho)^2 \rangle \quad \underline{\text{Porod invariant}}$$

Isotropic scattering:

$$\begin{aligned} S(\mathbf{Q}) &= \int e^{i\mathbf{Q}\cdot\mathbf{r}} \gamma(r) d^3 r, \quad S(Q) = \int_0^\infty r \gamma(r) \sin(Qr) dr \\ &= \frac{4\pi}{Q} \int_0^\infty r \gamma(r) \sin(Qr) dr = 4\pi \int_0^\infty r^2 \gamma(r) \text{sinc}(Qr / \pi) dr \end{aligned}$$

$$p(r) = r^2 \gamma(r) / \int_0^\infty r^2 \gamma(r) \text{sinc}(Qr / \pi) dr, \quad \text{Distance distribution function}$$

The Laws

for small Q , expand the $\text{Sin}(Qr)$:

$$\begin{aligned} S(Q) &= \frac{4\pi}{Q} \int_0^{\infty} r \gamma(r) \left[Qr - \frac{1}{3!}(Qr)^3 + \dots \right] dr \\ &= S(0) \left[1 - \frac{1}{6} Q^2 \langle r^2 \rangle + \dots \right], \quad \langle r^n \rangle = \int_0^{\infty} r^n p(r) dr \\ \therefore S(Q) &= S(0) \left[1 - \frac{1}{3} \underline{Q^2 R_G^2} + \dots \right] \end{aligned}$$

$$R_G^2 = \int_0^{\infty} r^2 p(r) d^3 r, \quad R_G = \text{Guinier radius (radius of gyration)}$$

Guinier's "Law"

$$S(Q) \approx S(0) e^{-Q^2 R_G^2 / 3}$$

Note: this implies $S(Q) \approx S(Q)$ only for $QR_G \leq \pi$.

The Laws

for large Q , first expand $\gamma(r)$ for small r :

for a scatterer of volume V and surface area S ,

$$\gamma(r) = [1 - r / \xi + \dots], \quad \underline{\xi = 4V / S \text{ Porod correlation length}}$$

Then from a basic theorem about Fourier transforms,

$$S(Q) \sim \frac{S/V}{Q^4} = \frac{4/\xi}{Q^4}$$

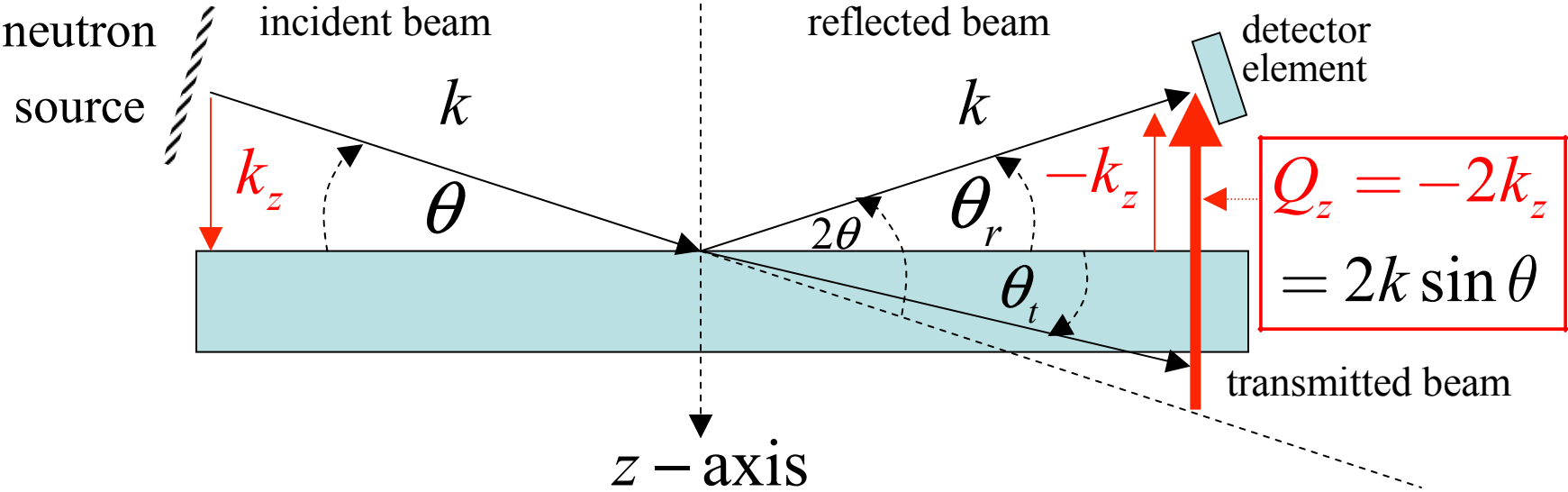
Porod's Law

$$\left. \frac{\partial \sigma(\mathbf{Q})}{\partial \Omega} \right|_{\text{coh}} = \frac{\langle (\Delta\rho)^2 \rangle S}{Q^4}, \quad \text{for } Q\xi \gg 1.$$

Basic Scattering Theory

NSR

Specular Reflection: $\theta_r = \theta$



Schrödinger Equation

$$-\nabla^2\psi(\mathbf{k}, \mathbf{r}) + 4\pi\rho(\mathbf{r})\psi(\mathbf{k}, \mathbf{r}) = k^2\psi(\mathbf{k}, \mathbf{r})$$

Specular paradigm

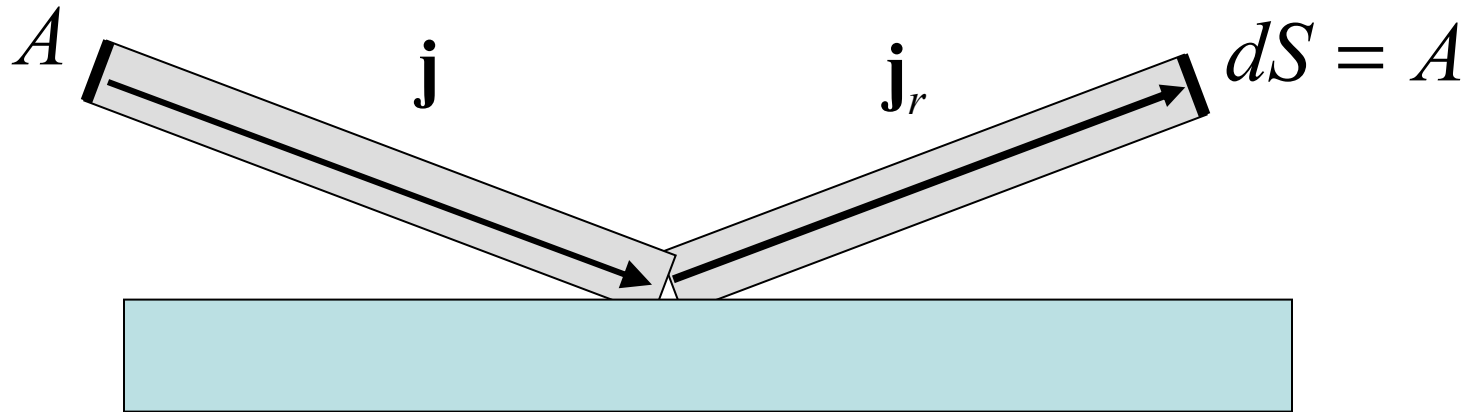
$$\rho(\mathbf{r}) = \langle \rho(x, y, z) \rangle_{xy} \triangleq \rho(z)$$

$$\psi(\mathbf{k}, \mathbf{r}) = e^{ik_x x} e^{ik_y y} \psi(k_z, z)$$

$$\boxed{-\partial_z^2\psi(k_z, z) + 4\pi\rho(z)\psi(k_z, z) = k_z^2\psi(k_z, z)}$$

1-D wave equation

What's measured?



recall current: $J = \frac{dN}{dt} = \mathbf{j} \cdot \mathbf{A}$

Reflectivity $R \triangleq \mathbf{j}_r \cdot \mathbf{A} / \mathbf{j} \cdot \mathbf{A}$

What's calculated?

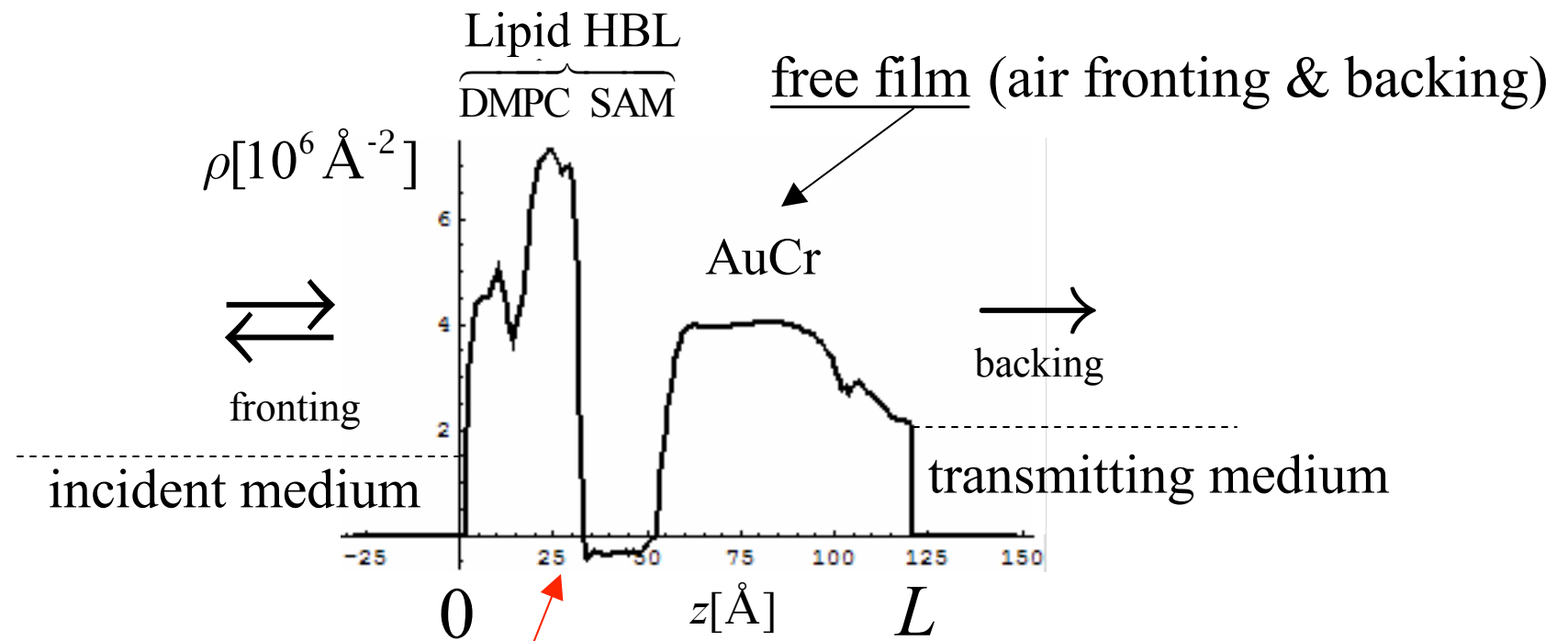
$$j = \frac{\hbar}{2mi} [\psi^* \nabla \psi - \psi \nabla \psi^*]$$

incident: $\psi_i = e^{i\mathbf{k}\cdot\mathbf{r}}$, $j_i = \hbar\mathbf{k} / m$

reflected: $\psi_r = r e^{-i\mathbf{k}\cdot\mathbf{r}}$, $j_r = \frac{\hbar\mathbf{k}}{m} r$

$$\therefore R = \mathbf{j}_r \cdot \mathbf{A} / \mathbf{j} \cdot \mathbf{A} = |r(Q_z)|^2 \rightarrow \langle |r(Q_z)|^2 \rangle$$

$$\mathbf{NOTE}: R \leq 1$$



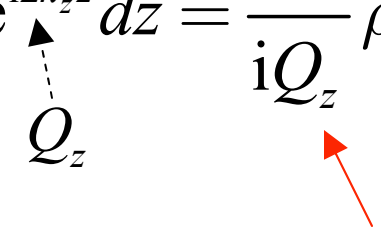
for the free film

$$r(Q_z) = \frac{4\pi}{iQ_z} \int_0^L \psi(k_z, z) \rho(z) e^{ik_z z} dz, \quad (Q_z \triangleq 2k_z)$$

recall $f(\mathbf{k}_s) = \int_{V_s} \psi(\mathbf{k}, \mathbf{r}) \rho(\mathbf{r}) e^{-i\mathbf{k} \cdot \mathbf{r}} d^3 r$ for point scatterers

$$r(Q_z) = \frac{4\pi}{iQ_z} \int_0^L \psi(k_z, z) \rho(z) e^{ik_z z} dz$$

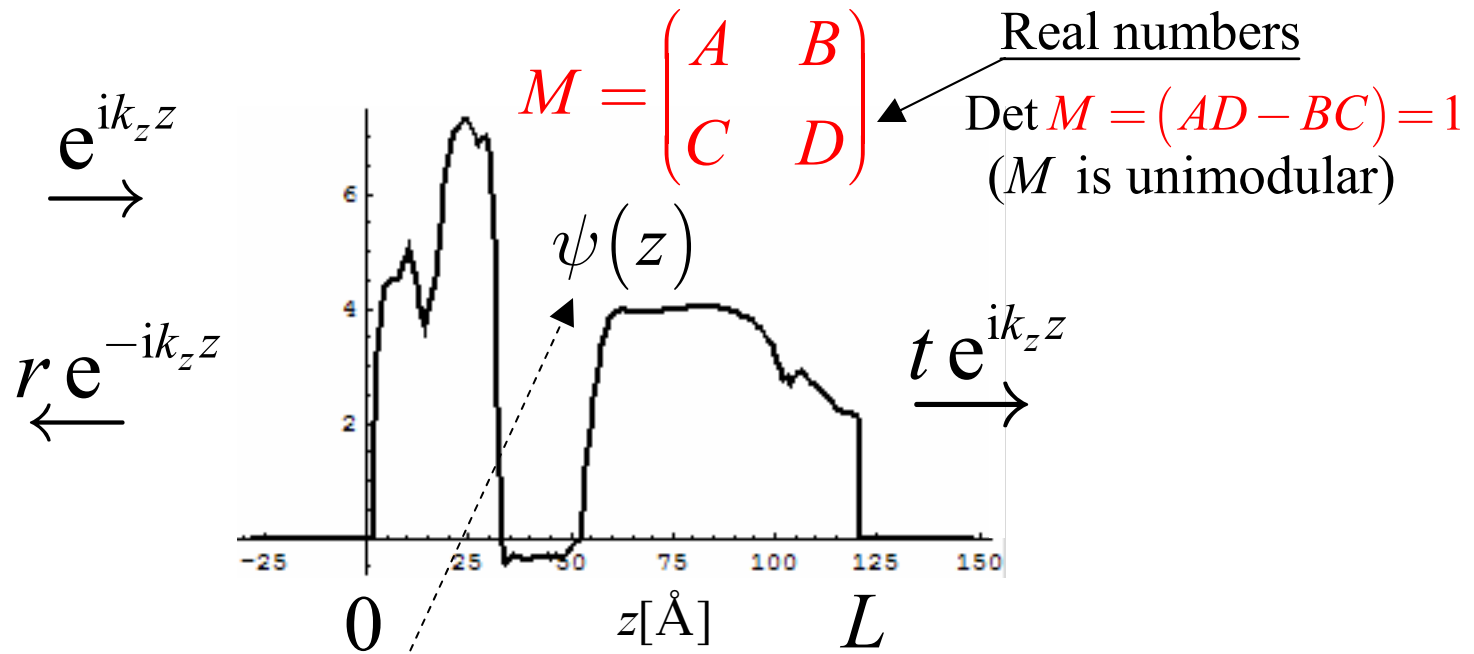
Born Approximation: $\psi(k_z, z) \rightarrow e^{ik_z z}$

$$r^{\text{BA}}(Q_z) = \frac{4\pi}{iQ_z} \int_0^L \rho(z) e^{i2k_z z} dz = \frac{4\pi}{iQ_z} \hat{\rho}(Q_z)$$


WARNING: BA breaks down as $Q_z \rightarrow 0$ (unlike SANS case)

Free film

Transfer Matrix



M "transfers" $\psi(z)$ and $\psi'(z)$ from $z = 0$ to $z = L$

$$M \begin{pmatrix} 1 + r \\ i(1 - r) \end{pmatrix} = \begin{pmatrix} 1 \\ i \end{pmatrix} t e^{ik_z L}$$

...giving two equations for r and t

$$\begin{pmatrix} 1+r \\ i(1-r) \end{pmatrix} = M \begin{pmatrix} 1 \\ i \end{pmatrix} t$$

$$r = \frac{B + C + i(D - A)}{B - C + i(D + A)}$$

$$= -\frac{\alpha - \beta + 2i\gamma}{\alpha + \beta}$$

$$\alpha = A^2 + C^2$$

$$\beta = B^2 + D^2$$

$$\gamma = AB - CD$$

$$\gamma^2 = \alpha\beta - 1$$

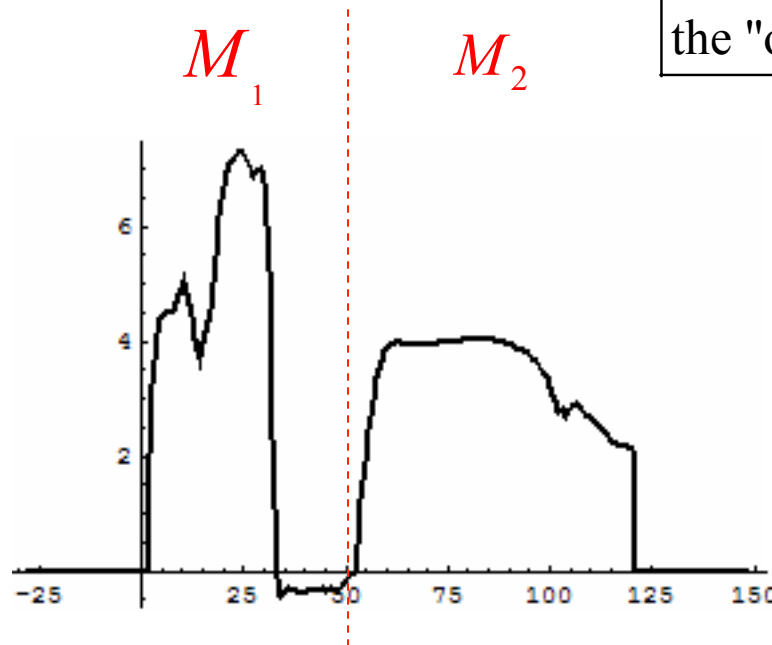
$$R = |r|^2 = \frac{\Sigma - 2}{\Sigma + 2}, \quad \Sigma = A^2 + B^2 + C^2 + D^2 = \alpha + \beta$$

The phase problem: $R[\alpha + \beta]$ doesn't determine α, β and γ .

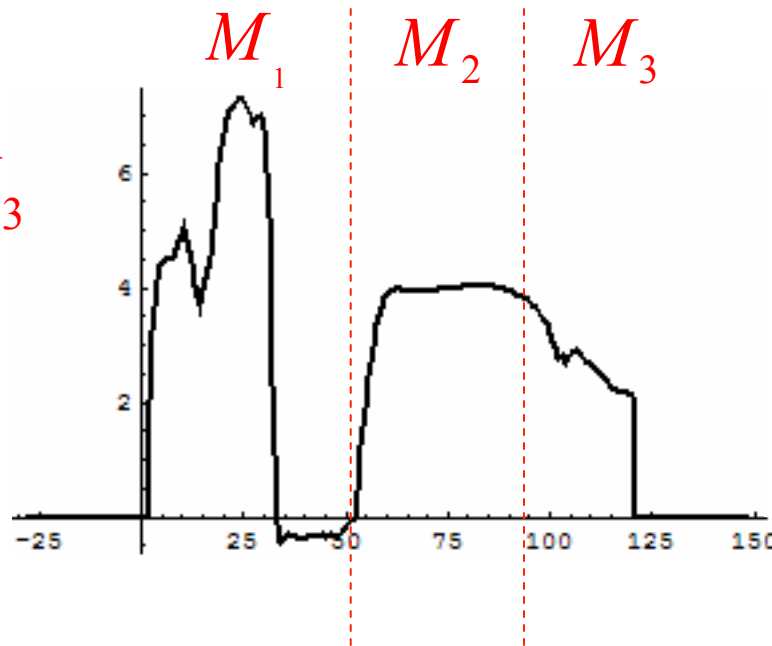
Transfer Matrix

Aside: historically, M also is called the "optical" matrix.

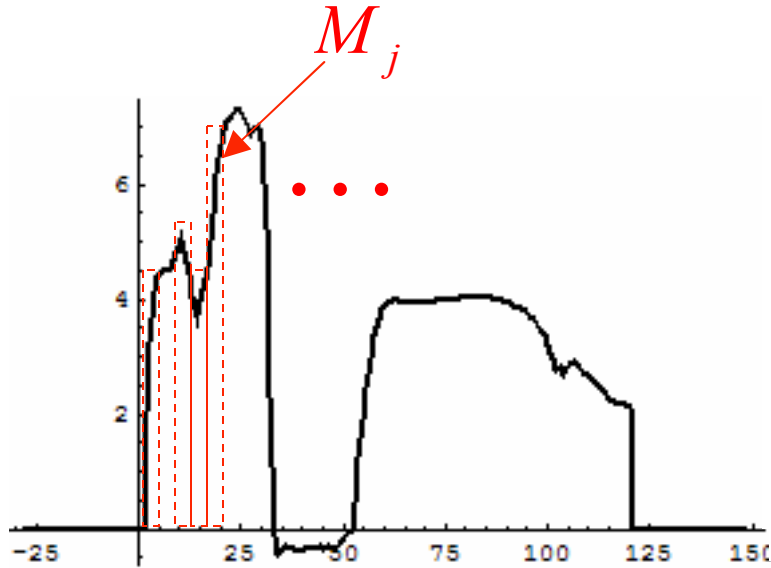
$$M = M_1 M_2$$



$$M = M_1 M_2 M_3$$



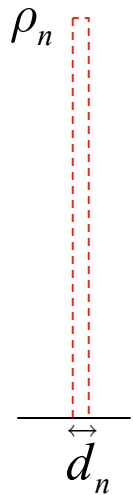
Transfer Matrix



$$M = M_1 M_2 \cdots M_N$$

Exact in $\lim_{N \rightarrow \infty}$

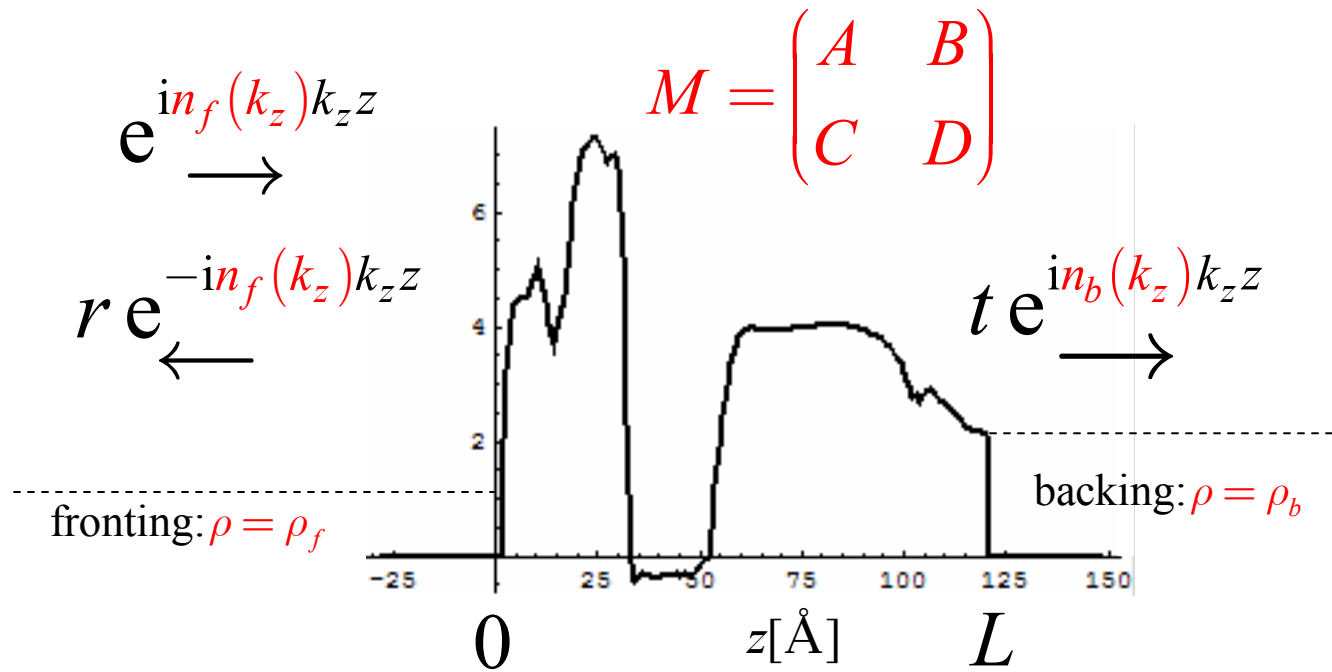
Good for $N \geq Q_{\max} L$



$$M_j = \begin{pmatrix} \cos[\xi_j(k_z)] & \sin[\xi_j(k_z)] / n_j(k_z) \\ -n_j(k_z) \sin[\xi_j(k_z)] & \cos[\xi_j(k_z)] \end{pmatrix}$$

$$\xi_j(k_z) = n_j(k_z) k_z d_n, \quad n_j(k_z) = \sqrt{1 - \frac{4\pi\rho_j}{k_z^2}}$$

Surrounded film

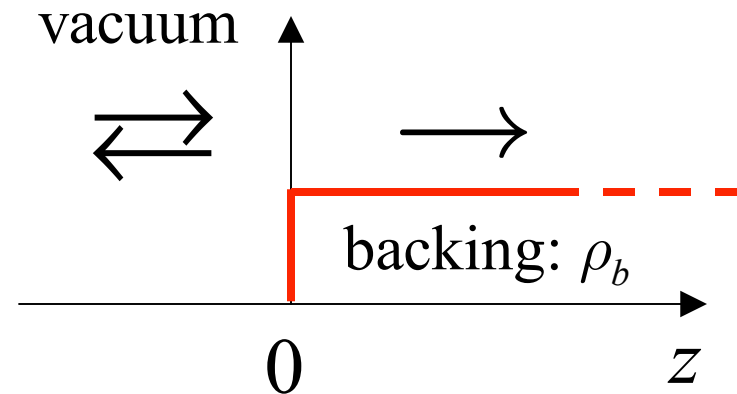


$$\alpha \rightarrow \alpha^{fb}, \beta \rightarrow \beta^{fb}, \gamma \rightarrow \gamma^{fb}$$

$$r = -\frac{\alpha^{fb} - \beta^{fb} + 2i\gamma^{fb}}{\alpha^{fb} + \beta^{fb}}$$

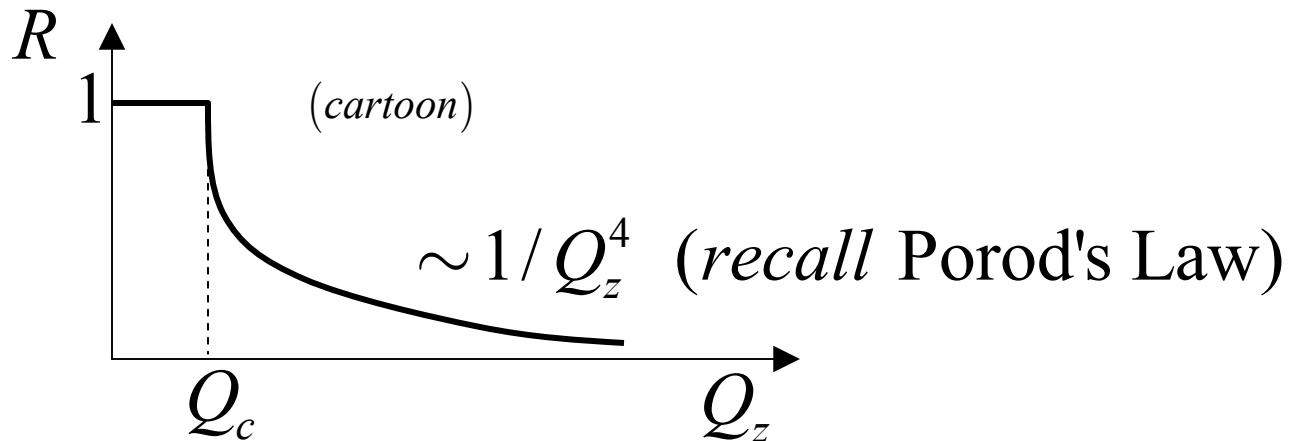
Two prototypes

1) Fresnel Problem: backing only



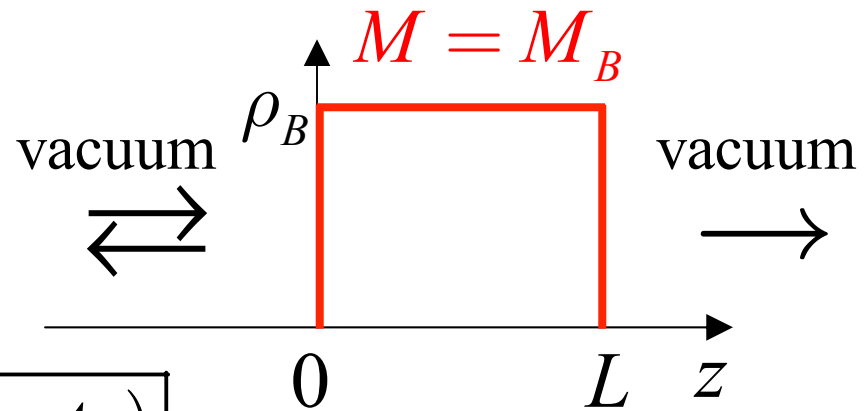
$$r(Q_z) = \frac{1 - n_b(Q_z/2)}{1 + n_b(Q_z/2)} \quad n_b(k_z) = \sqrt{1 - \frac{16\pi\rho_b}{Q_z^2}}$$

$$n_b(Q_z/2) = \mathbf{i} |n_b(Q_z/2)| \quad \text{for } Q_z \leq \sqrt{16\pi\rho_b} = Q_c$$



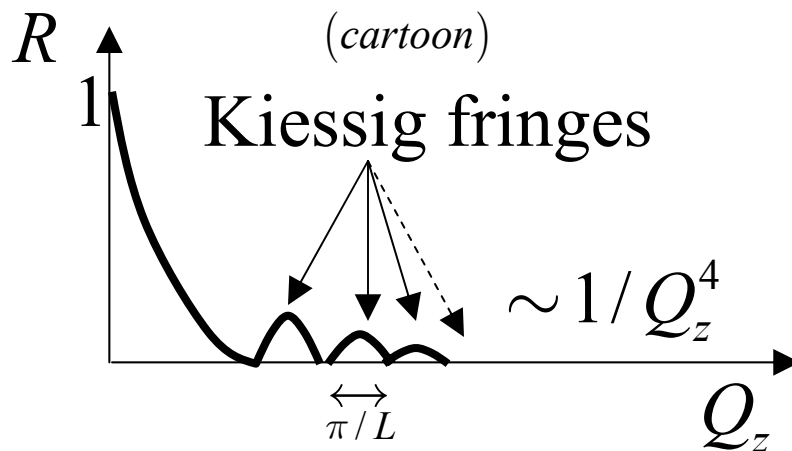
Two prototypes

2) Free barrier



$$r(Q_z) = \frac{B_B + C_B + i(D_B - A_B)}{B_B - C_B + i(D_B + A_B)}$$

$$n_B(Q_z / 2) = \sqrt{1 - 16\pi\rho_B / Q_z^2}$$



Enjoy the rest of the course!