

NIST Center for Neutron Research

DAVE

Data Analysis and Visualization Environment

Yiming Qiu
yiming.qiu@nist.gov
 7/2018

Easy Start

Powder Sample	2
Single Crystal Sample	3
Single Crystal Diffuse Scattering	6

File Menu

File Type	7
File Tools	7
Convert DCS Files to SPE Files	7
Patch DCS Files	8
Plot Single Crystal Alignment Files	9
Save Volume Data	9
Save Slice Data	10
Save Cut Data	10
Save Projection	10
Execute Script File	10

Parameters Menu

Save and Load Parameters	12
Change Self-Shielding Factor	12
Change Smoothing Kernel	12
Change Binning Threshold	13
Change Empty Can Subtraction Tolerance Value	13
Change Detector Offset Angle	13
Change WAND Incident Wavelength	13
Change MACS Detector Efficiency	13

Background Menu

Load Empty Can File(s)	13
Load Detector Background File(s)	14
Load Time Channel Background File	14
Load Dark Count File(s)	14
Set Overall Background Rate	14
Load Vanadium File(s)	15

Mask Menu

DCS Mask	15
Set Mask	15
Plot Mask	16
Mask Bragg Peaks	16
Save and Read Mask File	16

Option Menu

Instrument Geometry	17
Intensity Type	17
Binning Method	18
Monitor Count	18
Absorption Correction	19
Viewing Axis Type	19

Allow Extra Viewing Axis	19
Folding of Viewing Axis	20
Show Powder Line	20
Elastic Peak Position Adjustment	20
Empty Can Tolerance Method	20
Allow Voronoi Diagram	21
Slice Plot Empty Grid Color	21
Plot Window Background Color	22
User Macro/Function/Procedure	22
Dark Angle Correction	22
Show Dark Angle Trajectory	22
E-Dep. Detector Efficiency Correction	23
Hide Error Bar	23
View Spurs	23

Popup Menu

Check Bitflip Error	23
Preserve Negative 2theta Angle Value	24
Detector 2theta Correction	24
Allow Multi Sets of Empty Can Files	24
Lock Lattice Parameters	24
Check Lattice Parameters in Files	25

Window Menu

Hiding Part of the Window	25
Close All Plot Windows	25

Load Data File

Load Data	25
Add Data	26
Clear Data	27

Projection

Sample Type	27
Lattice Parameters	27
Crystal Orientation	28
Viewing Axes	28
Energy Rebin	29
Calculate Projection	29

Plotting and Fitting the Data

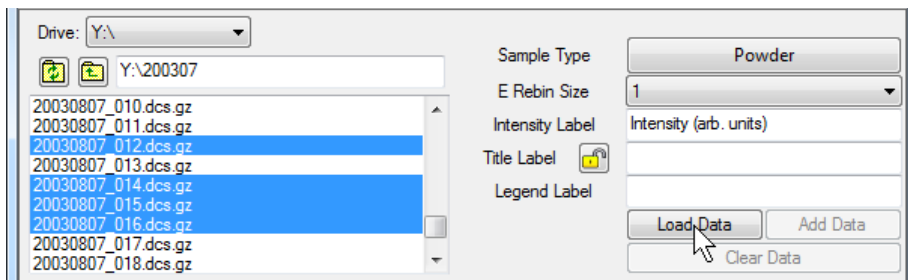
Intensity Label	29
Title & Legend Label	29
2D Slice Plot	30
1D Cut	31
3D Volume Plot	31
Fitting Data	31

Detector Trajectories

Plot Trajectories	31
-----------------------------------	----

Powder Sample

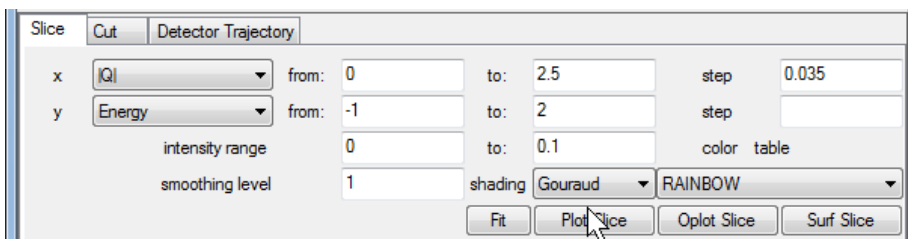
1. Change the sample type to Powder. Select the data files, and press **Load Data** button.



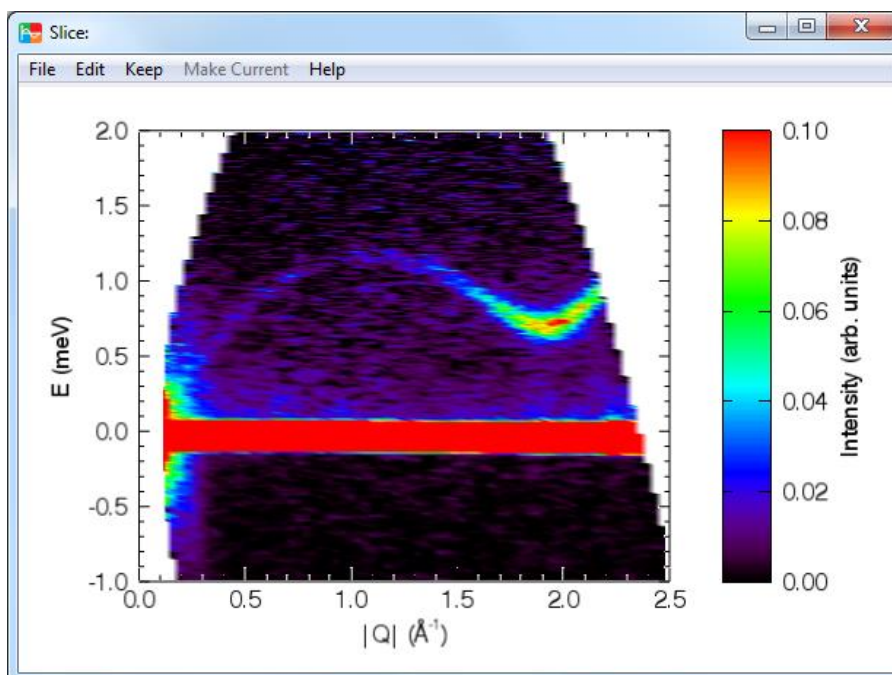
2. Choose the viewing axes, and press **Calculate Projection** button.



3. Press **Plot Slice** button to view the color contour plot of the intensity over the chosen viewing axes, or **Surf Slice** to view the 3D surface plot.



The plot will look like the following, which is a superfluid liquid He4 roton spectrum.



4. Choose the cutting axis, and press **Plot Cut** to plot the cut.

Slide Cut Detector Trajectory

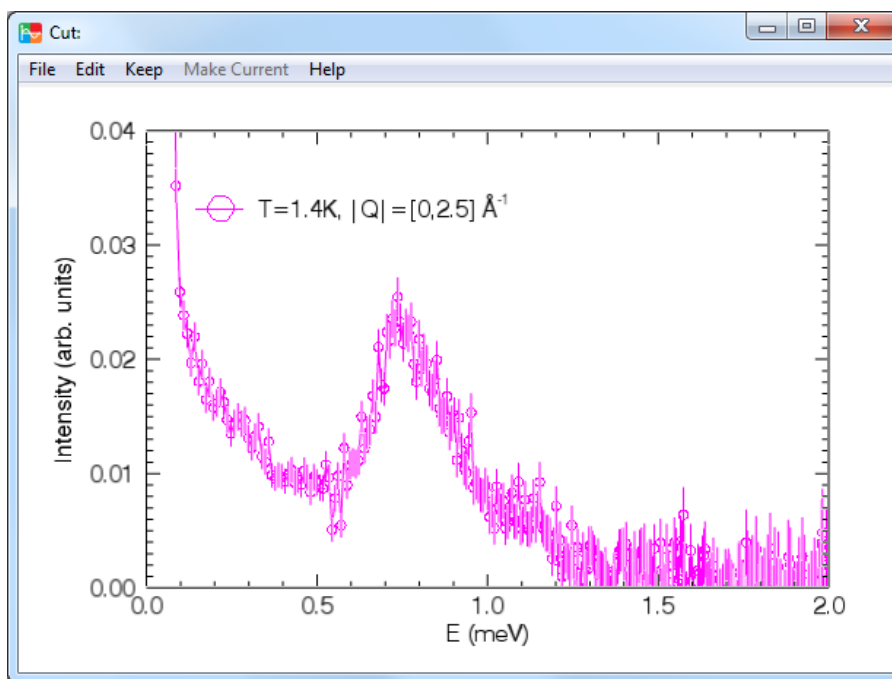
along Energy from: 0 to: 2 step

|Q| thick 0 to: 2.5 symbol magenta

y Intensity range 0 to: 0.04 circle solid

Fit Plot Cut Oplot Cut

The plot will look like the following.



Single Crystal Sample

1. Change the sample type to Single Crystal. Select the data files, and press **Load Data** button.

Drive: Y:\

Y:\200211

20021218_06.dcs.gz

20021218_07.dcs.gz

20021218_08.dcs.gz

20021219_01.dcs.gz

20021219_02.dcs.gz

20021219_03.dcs.gz

20021219_04.dcs.gz

20021219_05.dcs.gz

20021219_06.dcs.gz

Sample Type Single Crystal

E Rebin Size 1

Intensity Label Intensity (arb. units)

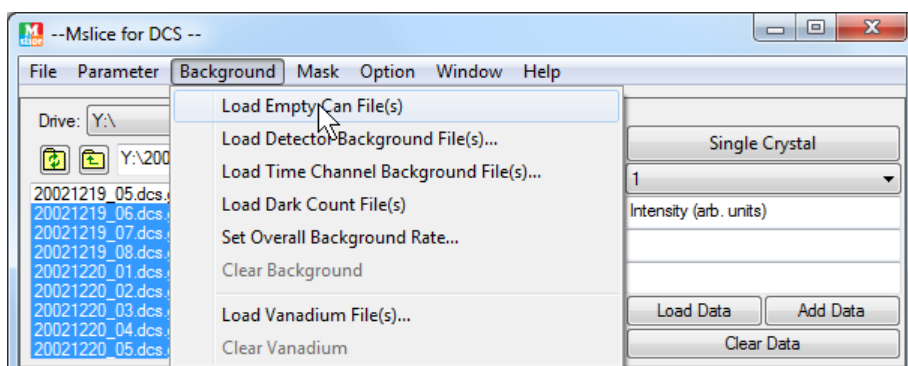
Title Label

Legend Label

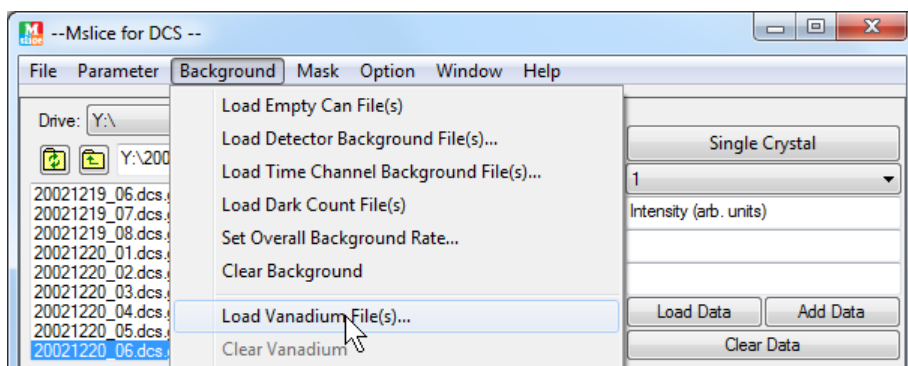
Load Data Add Data

Clear Data

2. Select the empty can files, then in **Background** menu, press **Load Empty Can File(s)**.



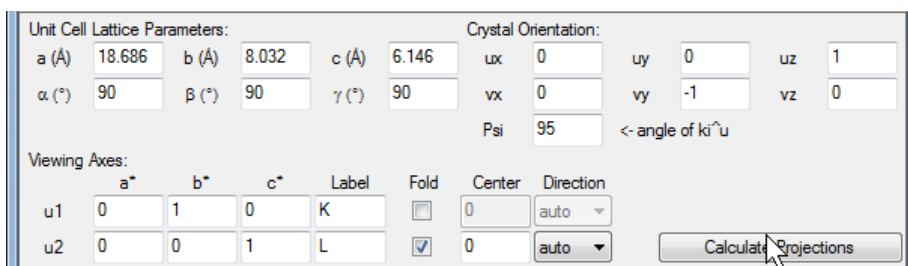
3. Choose the Vanadium file, and in **Background** menu, press **Load Vanadium File(s)**.



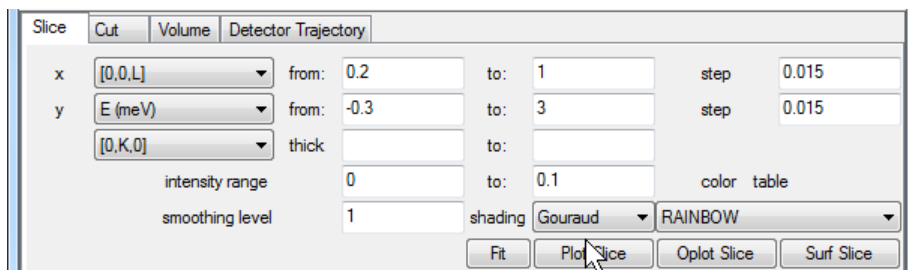
Press Yes for empty can subtraction and Skip in the dialog window for Debye-Waller factor and absorption correction calculation of the vanadium sample.

4. In the **Mask->DCS Mask** menu, mask the upper and lower detector banks.

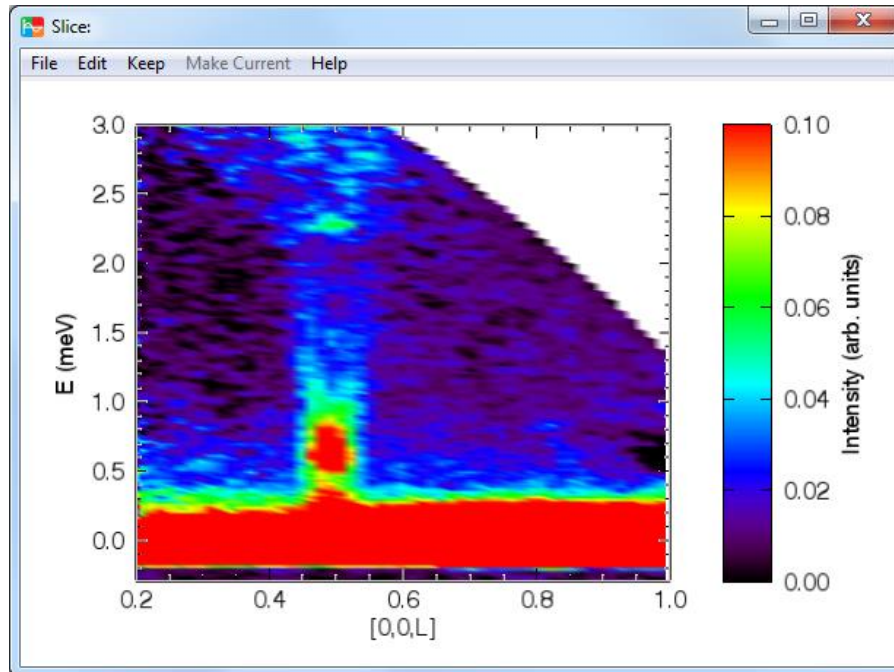
5. Enter the lattice parameters, crystal orientation, and the viewing axes, then press **Calculate Projection** button. Psi is the angle from k_i to u , with counterclockwise being the positive direction.



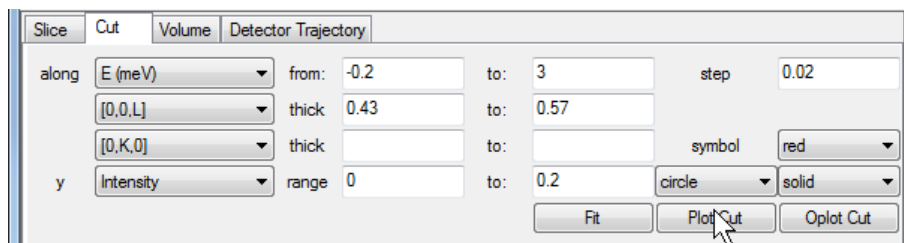
6. Choose the slice plane. Press **Plot Slice** button to view the color contour plot of the intensity over the slice plane, or **Surf Slice** to view the 3D surface plot.



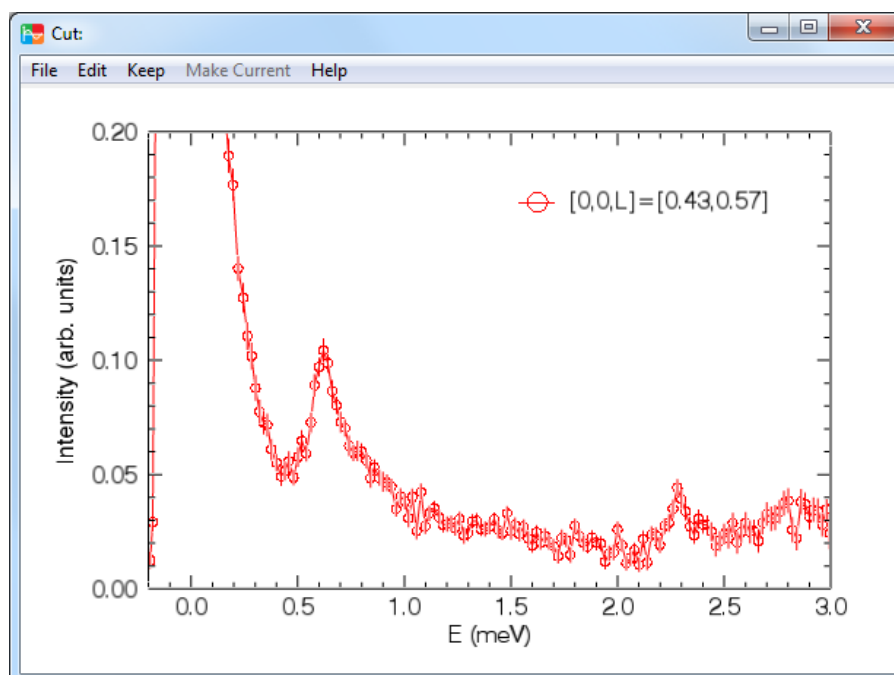
The plot will look like the following.



7. Choose the cutting axis and thickness over the other two axes, and press **Plot Cut** to plot the cut.

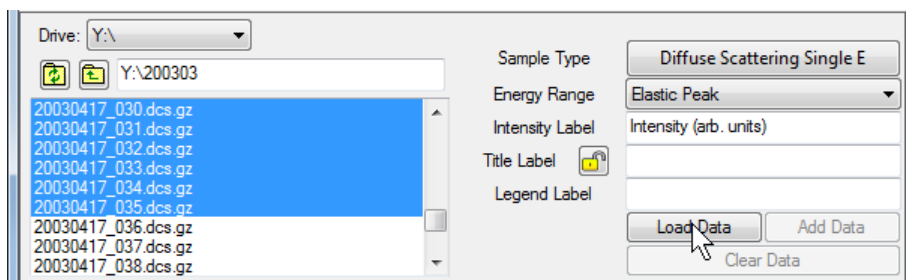


The plot will look like the following.



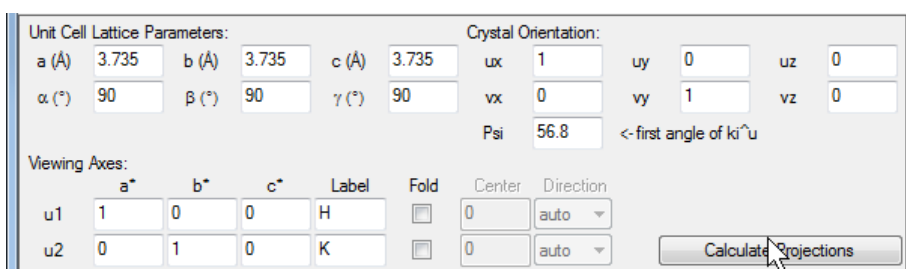
Single Crystal Diffuse Scattering

1. Change the sample type to Diffuse Scattering Single E and choose Elastic Peak as the energy range. Select the data files 20030415_095.dcs.gz to 20030417_035.dcs.gz, and press **Load Data** button.

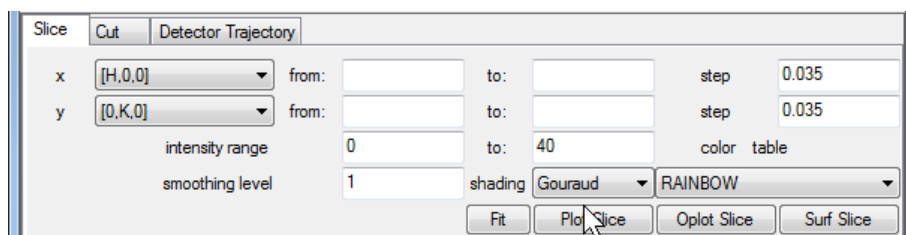


2. In the **Mask->DCS Mask** menu, mask the upper and lower detector banks.

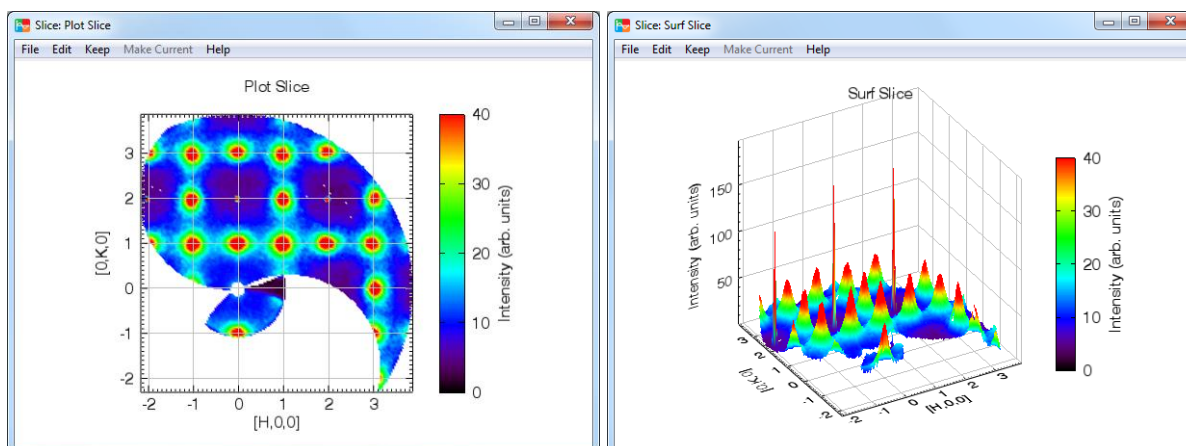
3. Enter the lattice parameters, crystal orientation, and the viewing axes, then press **Calculate Projection** button. Psi is the angle from \mathbf{k}_i to \mathbf{u} of the first file, with counterclockwise being the positive direction.



4. Press **Plot Slice** button to view the color contour plot of the intensity over the viewing axes, or **Surf Slice** to view the 3D surface plot.



The plots will look like the following.



File Type

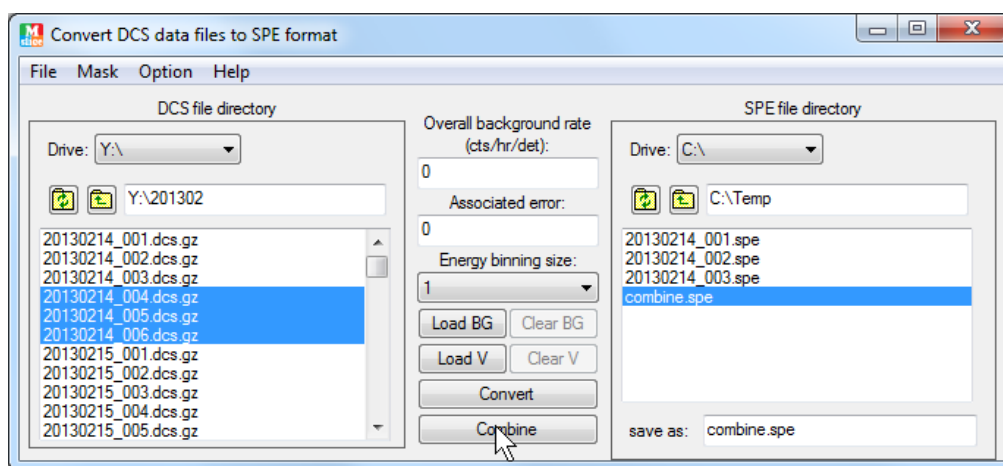
dcx_mslice is designed to handle multiple instrument and file formats. To switch among file types, go to **File->FileType** menu. If specific tools for the chosen file type are available, they are included in **File->FileTools** menu. Please refer to **Help->How to Add a New File Type** for the procedures of adding a new file type to the dcs_mslice program.

File Tools

File->FileTools menu contains specific tools for the current file type. This menu will be insensitive if no tools are available. Details of several tools are described below.

Convert DCS Files to SPE Files

For DCS file type, **Convert DCS Files to SPE Format** button in the **File->FileTools** menu starts a stand-alone application to convert DCS files into ASCII SPE format which can be processed by MATLAB [Mslice](#) or other programs.



Choose one or more DCS *.dcs or *.dcs.gz files in the DCS file directory, press **Convert** button to convert them into *.spe files. The converted files will have the same names as the DCS files except for the file extension and they are saved in the SPE file directory.

To combine two or more DCS files, choose them in the DCS file directory, then press **Combine** button. The name of the combined SPE file can be specified in the **save as:** textbox. If no name is given, the default is 'combine.spe'.

Overall background rate and **Associated error** are used to apply an overall background rate to all the detectors. The background will be subtracted in Convert and Combine operations.

Energy binning size is used to rebin the time channel to reduce the size of data.

Load BG button is used to load background files, which will be subtracted in Convert and Combine operations. There are two types of backgrounds: empty can and detector dependent energy gain side background. The types can be changed in **Option->BG File Type**. Once the background file is loaded, they will stay in the memory until **Clear BG** button is pressed. The **Clear BG** button will be sensitive only when a background file has been loaded. Note that the empty can files are treated as powder type, i.e., no rotation angle information is stored.

Load V button is used to load vanadium files, which will be used to calculate the detector efficiencies. If the empty can background data are present, they can be subtracted from the vanadium data. The

detector efficiencies are divided from data in **Convert** and **Combine** operation. Once the vanadium file is loaded, the detector efficiencies will stay in the memory until **Clear V** button is pressed. The **Clear V** button will be sensitive only when a vanadium file has been loaded.

Both background files and vanadium files are selected in the DCS file directory.

Detectors can be masked in various ways in the **Mask** menu. Once set, the mask will stay in the memory until **Mask->Clear the mask** is pressed.

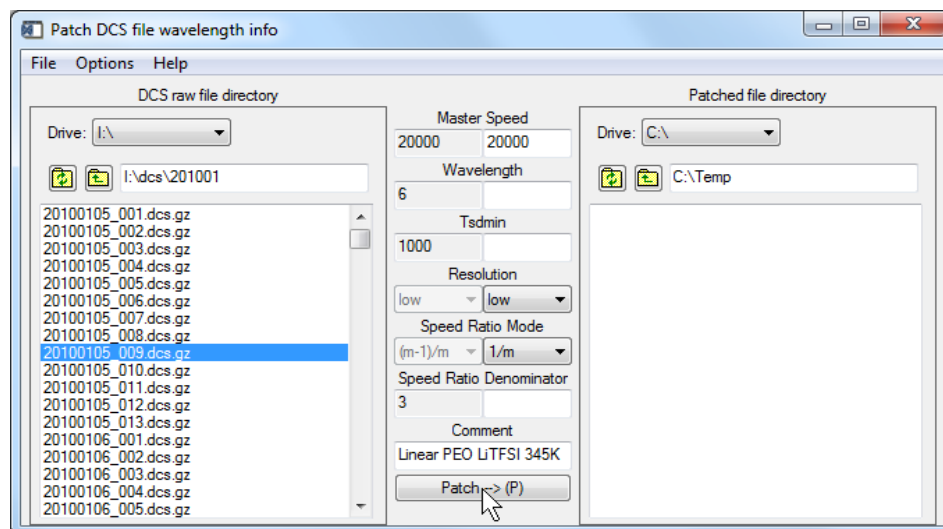
The data files can be saved as either single crystal or powder sample by choosing the corresponding sample type in the **Option->Sample Type** menu. With the choice of powder sample, detectors with the same two theta angle will be combined. The default is powder.

Detector configuration file (*.phx) can be created during file conversion by choosing the **Yes** option in **Option->Create Detector File**. The sample rotation angle information can also be saved in a file by choosing the **Yes** option in **Option->Create Rotation Angle File**. The default is No for both options.

The other options in the option menu are the same as those in the mslice option menu.

Patch DCS Files

Use this tool in the **File->FileTools** menu to patch the wavelength info, comment, or A2 angle of a DCS file. It can also be used to salvage [jumpy files](#) if multiple .sht files have been created during data collection.



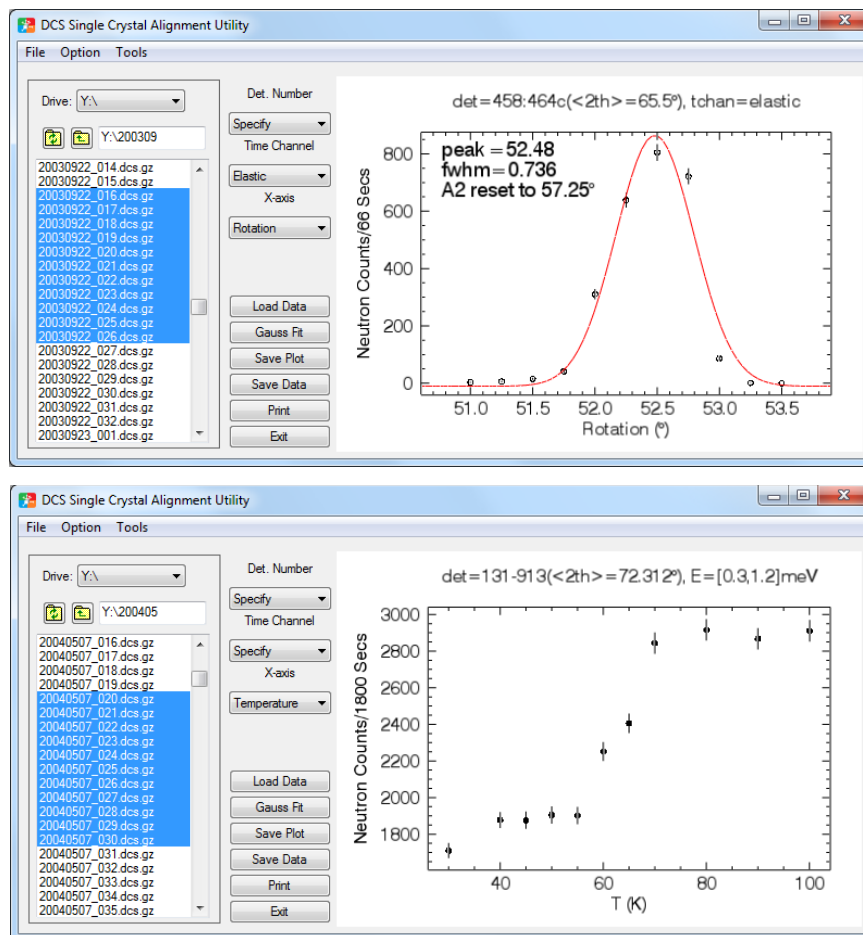
To change the wavelength info in a DCS file, select the file in the DCS raw file directory first. The original wavelength info will appear in the center left column as shown in the above figure. Enter new values in the center right column, and click Patch button to save the patched file in the patched file directory. The name of the patched file will start with a letter which can be changed in the option menu. The comment in a DCS file can also be changed by setting the “Allow Patching Comments” option. If only the tsdmin value needs to be changed, set the “Patch Tsdmin and Rotate Time Channel Only” option.

To patch the A2 (sample rotation) angle, set the “Patch A2 Only” option. If multiple files are selected, the same offset value calculated from the A2 value in the first file and the entered new A2 value will be applied to the other files.

To patch a jumpy file from .sht files, set the “Patch Jumpy File Only” option. Select the jumpy .dcs.gz file, and click Patch button. The .sht files need to be present in the raw file directory.

Plot Single Crystal Alignment Files

This is one tool specific for DCS, WAND, and MACS files. It allows one to easily plot the single crystal alignment files and fit the peak with a Gaussian function. The detector numbers corresponding to the Bragg peak need to be specified. The time channels can be all, elastic (time channels covering the whole elastic peak) or specified energy range. It also provides the capability of plotting temperature dependence of intensities in specified detectors and time channels.



Save Volume Data

File->Save Volume Data As menu allows you to save the current volume data either in a single multi-column ascii file, or into multiple slices. In the single ascii file, the first line is the label of each column of the data. In saving as multiple slices, x-slice means the slice is perpendicular to x axis, ie. yz planes, and y-slice and z-slice are perpendicular to y axis and z axis respectively. Once chosen a file name fname, the actual slice file names for x slices will be fname_x=###.ext, where ### is the x value for the slice, and ext is the file extension of the selected file format. The available file formats are described [below](#), except for DAVE file.

Save Slice Data

File->Save Slice Data As menu allows you to save the current slice data in four formats: DAVE file, SPE file, (intensity, err, x, y) 4-column ascii file, or (x, y, intensity, err) matrix file. The following is an example of the matrix file for a 3x4 matrix data.

```
3 4                ;nx ny
0.2                ;xdat
0.4
0.5

-1                ;ydat
0
1
2

0.10  0.22  0.33   ;intensity
0.11  0.40  0.65
0.12 -2.80 -1.20
0.13  3.12  0.00

0.01  0.02  0.04   ;error bar
0.02  0.10  0.11
0.02  0.75  0.02
0.03  0.25 -1.00
```

The slice data are exactly the same as the data shown if **Plot Slice** button is pressed except that there is no smoothing of the data. -1 in the error bar signifies missing data in the grid. A filler of -1e20 is also used to represent the missing data intensity.

An additional ascii format PSUTXT is implemented in the [script file execution](#):

```
self->script,'save_slice',directory=directory,filename=filename,/psutxt
```

This format is intended to save the slice suitable for PSU data analysis.

Save Cut Data

File->Save Cut Data As menu allows you to save the current cut data in two formats: (x, y, yerr) 3-column ascii file, or DAVE binary file.

The cut data are exactly the same as the data shown if **Plot Cut** button is pressed.

Save Projection

File->Save Projection As menu allows you to save the whole projection data in a multi-column ascii text format. The first line is the label of each column of the data.

Execute Script File

A script file should contain executable IDL statements. The following is a list of operations that can be included in the script file.

```
self->script,'load_parameter',directory=directory,filename=filename      ;load parameter file
self->script,'load_emptycan',directory=directory,filename=filename,angle=angle ;load empty can file
```

;Angle is a float array or file name containing the sample rotation angles for spe files.

```
self->script,'load_data',directory=directory,filename=filename,angle=angle,eief=eief,phxfile=phxfile
```

;load data file

;Angle, eief, and phxfile are keywords for spe file type. Filename and phxfile should not include the directory information. Angle is a float array or file name containing the sample rotation angles.

```
self->script,'calc_projection',temperature=temperature,dwu2=dwu2
```

;calculate projection

;The temperature keyword is used as the sample temperature for certain intensity types.

;The dwu2 keyword is used for u^2 in the Debye-Waller correction for certain intensity types.

;The default value for dwu2 is 0.

```
self->script,'save_cut',directory=directory,filename=filename,xye=xye,dave=dave
```

;save cut to a file

```
self->script,'save_slice',directory=directory,filename=filename,dave=dave,iexy=iexy,spe=spe,$
```

xyie=xyie,smooth=smooth,filler=filler,psutxt=psutxt

;save slice to a file

;The smooth keyword is used for smoothing the data. The default value is 0.

;The filler keyword is used to represent the empty grid data. The default value is -1e20.

```
self->script,'save_volume',directory=directory,filename=filename,smooth=smooth,filler=filler,$
```

slice=slice,iexy=iexy,spe=spe,xyie=xyie,psutxt=psutxt

;Save volume to a single multi-column text file if slice keyword is not present.

;Save volume as multiple slices when slice keyword is present:

;slice=0, x slices (ie yz planes); slice=1, y slices (ie xz planes); slice=2, z slices (ie xy planes).

;iexy, spe, xyie, and psutxt keywords are combined with slice keyword to specify the output file

;format.

```
self->script,'save_projection',directory=directory,filename=filename
```

;save projection to a file

```
self->script,'keep_current_plot'
```

;keep the current plot

```
self->script,'plot_cut',overplot=overplot,title=title,legend=legend
```

;plot the cut

```
self->script,'plot_slice',surfplot=surfplot,title=title
```

;plot the slice

```
self->script,'plot_volume',title=title
```

;plot the volume data

```
self->script,'set_parameter',name=name,value=value
```

;set parameter

;The name keyword is a string or string array.

;value is a number or array of numbers. value and name keywords must have the same size.

In 'save_cut' script, set the *xye* keyword to save as a text file. In 'save_slice' script, set one of the *psutxt*, *spe*, *iexy*, and *xyie* keywords to save as a text file. The file formats are described in the [save slice data](#) section.

In 'set_parameter' script, the names of the text box parameters are shown in the figures below.

Unit Cell Lattice Parameters:				Crystal Orientation:							
a (Å)	<input type="text" value="lattA"/>	b (Å)	<input type="text" value="lattB"/>	c (Å)	<input type="text" value="lattC"/>	ux	<input type="text" value="orieUx"/>	uy	<input type="text" value="orieUy"/>	uz	<input type="text" value="orieUz"/>
α (°)	<input type="text" value="lattAA"/>	β (°)	<input type="text" value="lattBB"/>	γ (°)	<input type="text" value="lattCC"/>	vx	<input type="text" value="orieVx"/>	vy	<input type="text" value="orieVy"/>	vz	<input type="text" value="orieVz"/>
						Psi	<input type="text" value="oriePsi"/>	<- first angle of k_i^*u			

Slice	Cut	Volume	Detector Trajectory
x	[H,0,0]	from: dispfrom to: dispsto step: dispstep	
y	[0,K,0]	from: dispyfrom to: dispyto step: dispstep	
	[0,0,L]	thick: dispselffrom_T0 to: dispselfto_T0	
	E (meV)	thick: dispselffrom_T1 to: dispselfto_T1	
	intensity range	displfrom to: displto	color table
	smoothing level	dispSmooth shading: Gouraud	RAINBOW

Slice	Cut	Volume	Detector Trajectory
along	[H,0,0]	from: cutFrom to: cutTo step: cutStep	
	[0,K,0]	thick: cutselffrom_T0 to: cutselfto_T0	
	[0,0,L]	thick: cutselffrom_T1 to: cutselfto_T1	
	E (meV)	thick: cutselffrom_T2 to: cutselfto_T2	symbol: red
y	Intensity	range: cutYfrom to: cutYto	circle solid

Slice	Cut	Volume	Detector Trajectory
x	[H,0,0]	from: volbfrom to: volbto step: volbstep	
y	[0,K,0]	from: volyfrom to: volyto step: volystep	
z	E (meV)	from: volzfrom to: volzto step: volzstep	
	[0,0,L]	thick: volselffrom_T0 to: volselfto_T0	
	intensity range	volbfrom to: volbto	color table
	smoothing level	volSmooth interp.: Trilinear	RAINBOW

Save and Load Parameters

To save the current settings in the main window, click the **Parameter-> Save Parameters** button. A file selection window will pop up. The default extension of saved file is *.prm. If no file name is entered or selected, no action is taken.

To load a previously saved parameter file, click the **Parameter->Load Parameters** button. A file selection window will pop up. All the parameters shown in the main window plus some options will be restored. However, previous data and projection are not loaded.

Change Self-Shielding Factor

The self-shielding factor is used in [background subtraction](#) according to the following equations:

$$I = I_1 - \text{ssfactor} * I_2,$$

$$dI = \sqrt{dI_1^2 + (\text{ssfactor} * dI_2)^2}.$$

Change Smoothing Kernel

The smooth kernel for smoothing the 2D slice data can be changed in the **Parameter** menu. The default kernel is [[0.1,0.2,0.1],[0.2,0.8,0.2],[0.1,0.2,0.1]]. An error will be displayed if the entered matrix is not symmetric.

Change Binning Threshold

The binning threshold (f) is a factor that is used to remove bins that have too small number of data in them. Only bins that have at least $f \cdot N_{MAX}$ number of data will be plotted. N_{MAX} is the maximum number of data in a single bin. The default is $f=0$, which will include all data in the binning. This factor will be reset to 0 every time a new file is loaded.

Change Empty Can Subtraction Tolerance Value

The tolerance values are used for locating the corresponding empty can data during background subtraction. In diffuse scattering modes, the rotation angle is used to match the data. For MACS data, the energy, kidney angle, and A3 (single crystal only) need to be matched.

There are two methods to find the match. One is to find the ones that are within the tolerance or the closest one, the other is to find the ones that are within the tolerance of the closest one. For example, if the sample data rotation angle is 2.1, and the empty can rotation angles are [1,2,3,4,5], and the tolerance is 1, then for the first method, the matched empty can angle will be 2 and 3 (within the tolerance); for the second method, the matched empty can angle will be 2 (closest) and 1 and 3 (within the tolerance of the closest). The empty can subtraction tolerance method can be chosen at the **Option->Empty Can Subtraction Tolerance Method** menu.

Change Detector Offset Angle

This menu item will only appear in WAND and MACS file type.

The detector bank of WAND is movable. The default location of the detector bank is at an offset angle (the smallest angle of the detectors) of 11.236° . Use this operation to change the offset angle. The offset angle will not be saved in a parameter file, and every time the program is started, the offset angle will be set to the default value.

For MACS, the default offset value is 0. If by any chance the detector angles need to be offset, use this operation to achieve the adjustment.

Change WAND Incident Wavelength

This menu item will only appear in WAND file type. The default incident wavelength for WAND is 1.46 \AA . Use this operation to change the incident wavelength. The incident wavelength will not be saved in a parameter file, and every time the program is started, the incident wavelength will be set to the default value.

Change MACS Detector Efficiency

The detector efficiency values of the 20 spectroscopic detectors and 20 diffraction detectors are saved in the data file and available once the data are loaded. They can also be set by loading the vanadium file in **Background->Load Vanadium File(s)**. The detector efficiency can also be manually changed in this operation. If the detector efficiencies are changed, and no vanadium file has been loaded, one needs to confirm not to overwrite the detector efficiency during file loading. (These values are actually inversely proportional to the detector efficiency, i.e., in the calculation, the intensity will be multiplied by these values.)

Load Empty Can File(s)

To load an empty can file, use the upper left [file locator](#) to select the empty can file(s). Then press the **Background->Load Empty Can File(s)** button. The empty can data will stay in the memory until

the **Background->Clear Background** is pressed. The empty can data will be subtracted in projection calculation. The intensity (I) and error (dI) are calculated as follow:

$$I = I_1 - \text{ssfactor} * I_2 ,$$
$$dI = \sqrt{dI_1^2 + (\text{ssfactor} * dI_2)^2} ,$$

where ssfactor is the average self-shielding factor. In diffuse scattering mode, the background file data are accompanied by orientation angle information, and the background data within the specified tolerance or with the closest orientation angle are subtracted during projection calculation. In the other modes, the background files are combined into one angle even if the actual angles are different.

For MACS data, the energy, kidney angle, and in single crystal mode the rotation angle a3, of the background file data needs to be matched. The background data are subtracted during projection calculation.

The tolerance value can be changed in [Parameter->Change Empty Can Subtraction Tolerance Value](#).

Load Detector Background File(s)

This operation calculates the supposedly flat background from the specified background files. The result is an array with the size of the number of detectors. An energy range will be asked, which is used to locate the flat background. An example will be using a very low temperature measurement and an energy range in the energy gain side, where no scattering would be expected. The background data will stay in the memory until **Background->Clear Background** is pressed. The background will be subtracted in projection calculation.

Load Time Channel Background File(s)

This operation calculates the background of certain time channels averaged over a given 2theta range from the specified background files. The result is an array with the size of the number of time channels in the given energy range. The energy range and two theta range will be asked, which are used to locate the background. The background data will stay in the memory until **Background->Clear Background** is pressed. In projection calculation, the background in the relative time channels will subtracted from the data.

Load Dark Count File(s)

This operation loads a shutter closed dark count file. Use **Background->Clear Background** to clear it from the memory. This operation currently is only functional for DCS file type. If empty can data are present, the dark counts will be subtracted from them also. Dark count data and the overall background rate reside in the same memory.

Set Overall Background Rate

The **Set Overall Background Rate** button in the **Background** menu is used to input the overall background rate in counts/hour/detector. The value is then adjusted accordingly to be subtracted from DCS data in projection calculation. There is no error bar handling in this process. Use **Background->Clear Background** to clear it from the memory. This operation currently is only allowed for DCS file type. If empty can data are present, the overall background rate will be subtracted from them also.

Load Vanadium File(s)

To calculate the detector efficiency factor of the spectrometer, first highlight the vanadium file using the upper left [file locator](#), then press the **Load Vanadium File(s)** button in the **Background** menu.

If the empty can data are present when this operation is carried out, they can be subtracted from the vanadium data in the first two sample types. The Debye-Waller factor will be calculated if the temperature is given. One can choose to skip this calculation. The absorption of the vanadium is taken into account if the dimensions of the annular vanadium sample are given. Press OK button without giving the dimensions will skip the absorption calculation.

For file types other than MACS, the detector efficiency factor is calculated as proportional to the integrated intensity of the elastic peak in each detector. The detector efficiency factor is divided from the raw data every time the projection is calculated.

For MACS, there are two types of vanadium files: kidney scan files and A5 scan files. The kidney scan files are suited for elastic data and the A5 scan files are suited for inelastic measurements. When one chooses to load the kidney scan vanadium files, the files doesn't need to be actual vanadium measurement. Since the calculation is based on matching data in overlapping detectors, any data file with overlapping θ angles for different detectors will work. The range of θ to be excluded from the calculation needs to be provided to avoid the direct beam. The intensity factor could be either the average of the ratios of the overlapping intensity, or the ratio of the averaged intensities of the overlapping data. The symmetrization option is intended to make the counts of detectors with the same $|\theta|$ at positive and negative side equal to each other. This is necessary since sometimes there might be a break in the overlapping region due to the exclusion of lower angle θ s. When loading A5 scan vanadium files, two files need to be loaded, each measured at a different kidney angle to compensate for the direct beam. The range of θ to be excluded from the calculation needs to be provided. Once the vanadium files are loaded, the original detector efficiency info loaded from the data files will be replaced by the calculated values. Loading new data files will not replace the calculated values. (These values are actually inversely proportional to the detector efficiency, i.e., in the calculation, the intensity will be multiplied by these values.)

Use **Background->Clear Vanadium** to clear the detector efficiency factor from memory. For MACS data, the original detector efficiency info loaded from the data file will be restored.

DCS Mask

There are three detector banks in the DCS instrument, each of which can be masked. There is also a **Mask Negative Angle Detectors** option to mask the small amount of detectors on the west side. As for all masking operation, the mask takes effect when projection is calculated.

Mask set by detector angular range is stored separately, and will not be affected by DCS detector bank masking.

Once set, the mask stays in the memory. To clear the mask, press **Mask->Clear Mask** button.

Set Mask

To mask arbitrary detectors, one can either set mask or plot mask from the mask menu.

To set mask by detector number (type 0), enter the detector number or detector range using “:” or “-” character. The detector number starts from 0. To set mask by angle (type 2), enter the masked angular range, using “:”, “>”, or “<” as the range character. “-” should be used only as the negative sign.

Mask set by detector angular range (type 2) is stored separately from the other masks.

The mask takes effect when projection is calculated. Once set, the mask stays in the memory. To clear the mask, press **Mask->Clear Mask** button. Clearing the mask clears all types of detector masks.

For MACS instrument, A3 angle can also be masked in the **Mask->Set Mask->Mask A3 by Angle** operation. The A3 mask and the detector mask are stored separately. Use **Mask->Clear A3 Mask** to clear the A3 mask. To only view the PTAI detector, set the **Mask->Set Mask->View PTAI Only** option. PTAI is the designated detector number for an intended Q value. This is most useful for viewing scans in triple-axis mode. Clearing detector mask or switching to other masking mode will clear this option. The **View PTAI Only** option can also be accessed by the toggle button next to **Clear Data** button.

To mask data obstructed by sample equipment dark angle in diffuse scattering modes (single crystal mode for MACS), use the **Mask->Set Mask->Mask Dark Angle...** option. The dark angle position and dark angle width need to be specified. The dark angle position is with respect to the crystal orientation axis **u**, with counterclockwise rotation being positive. Click this option again to disable the dark angle mask.

Plot Mask

Plot mask will start an interactive masking tool. You can read the help information in that tool to learn how to use it to mask detectors. This function is available only when data are loaded.

Plot mask by detector number (type 0) or by angle (type 1) will return the masked detector indices. For MACS, plot mask by angle will return the masked indices of the actual two-theta angles, not the indices of the 20 detectors. The mask takes effect when projection is calculated.

Mask set by detector angular range is stored separately, and will not be affected by plotting mask.

Once set, the mask stays in the memory. To clear the mask, press **Mask->Clear Mask** button.

Mask Bragg Peaks

To automatically mask the detectors where the Bragg peaks occur, press the **Mask->Set Mask->Mask Bragg Peaks** menu button. An interactive plot mask window will appear to allow modifications. This function is available only when data are loaded. The mask takes effect when projection is calculated. This operation automatically clears the mask set by detector angular range.

Once set, the mask stays in the memory. To clear the mask, press **Mask->Clear Mask** button.

Save and Read Mask File

The detector masks can be saved in a text file by pressing the **Save Mask File** in the **Mask** menu. For type 0 and type 1 masking, the masked indices are saved. For type 2, the angular mask string is saved.

The index numbers of detectors to be masked can also be read from a text file (type 0 and 1). The numbers should be separated by space or comma, and can be in multiple lines. The detector number starts from either 0 or 1. For type 2 mask file, the angular mask string is read from the file. The mask takes effect when projection is calculated.

Once set, the mask stays in the memory. To clear the mask, press **Mask->Clear Mask** button.

For MACS instrument, both the detector and the A3 masks are saved or read.

Instrument Geometry

There are two instrument geometries, **Direct** for fixed E_i instruments and **Inverse** for fixed E_f instruments. For a given instrument, this option may not be changeable.

Tip: For MACS, even if the instrument is run at inverse geometry, to be able to view data measured at different E_f with the E-dependent detector efficiency correction on, the instrument geometry should be switched to direct.

Intensity Type

Use **Option->View Intensity As** button to choose the intensity type as one of the following:

S(Q,omega)	--- a factor of $(k_i/k_f)^4$ is applied to the monitor normalized intensity; for MACS, a factor of $(1/k_f)$ is applied;
Symmetrized S(Q,omega)	--- a factor of $\exp(-E/2k_B T) * (k_i/k_f)^4$ is applied; for MACS, a factor of $\exp(-E/2k_B T) * (1/k_f)$ is applied;
d2(sigma)/d(Omega)d(Ef)	--- a factor of $(k_i/k_f)^3$ is applied ;
Chi(Q,omega)	--- a factor of $[1 - \exp(-E/k_B T)] * (k_i/k_f)^4$ is applied; for MACS, a factor of $[1 - \exp(-E/k_B T)] * (1/k_f)$ is applied;
GDOS	--- a factor of $[1 - \exp(-E/k_B T)] (k_i/k_f)^4 * E/Q^2$ is applied;
VDOS	--- a factor of $[1 - \exp(-E/k_B T)] (k_i/k_f)^3 * E * \sin(2\theta) / (Q_{\max}^4 - Q_{\min}^4)$ is applied;
J(Q,y)	--- the intensity is $(\hbar Q/M) * S(Q,omega)$, and $y = (M/\hbar Q) * (E - E_R)$, where M is the mass, and $E_R = (\hbar Q)^2 / (2M)$;
Unadjusted by k_i/k_f factor	--- no k_i/k_f factor is applied to the monitor normalized intensity.

The option **E-Integrated Intensity** in the **Option->View Intensity As** menu will result in the following calculation being carried out in plotting cuts and slices:

$$I = \frac{\sum I \Delta \omega}{\sum \Delta \omega} \Delta E,$$

where $\Delta \omega$ is the energy width for the corresponding time channels, and ΔE is the proper energy range, for example the energy thickness in a Q-cut, or the energy binning steps. A warning message will be displayed if this option is on when starting dcs_mslice program.

For MACS files, use **Option->View Intensity As->MACS Detector Choice** menu to select among SPEC, DIFF, or SPEC+DIFF detectors for the intensities. The SPEC detectors are the spectroscopic detectors after the second vertical focusing analyzers, and the data contain energy information. The DIFF detectors are the diffraction detectors directly behind the first vertical focusing analyzers, and the data contain no energy information. The energy transfer is set to 0 for DIFF and SPEC+DIFF detectors during projection calculation.

MACS can be operated in time-resolved histogram data collection mode. To view the histogram data, set **Option->View Intensity As->MACS Data Mode** menu to histogram. You need to specify the histogram time channel width and number after switching to the histogram mode. The time channel width and number can be modified at **Parameter->Change MACS Histogram Channel Width** menu. In the histogram mode, the trailing channels are for data dump. They can be thrown away and not be shown. If the specified histogram channel unit is microsecond, the unit of the time axis will be millisecond; and if the histogram channel unit is millisecond, the time axis unit is second.

Binning Method

Two binning methods, **average** and **sum**, can be chosen from the **Option->Binning Method** menu. The average or sum of the intensities in each bin is calculated respectively in the two methods. The binning method is applied in rebinning time channel according to **E Rebin Size** for *powder* and *single crystal* mode, and rebinning data in displaying slices and cuts.

There are two options of averaging: **arithmetic mean** or **weighted mean**. For arithmetic mean, the mean value and the error bar is calculated as:

$$\bar{x} = \frac{\sum_i^n x_i}{n},$$
$$dx = \frac{\sqrt{\sum_i^n dx_i^2}}{n}.$$

For weighted mean, the mean value and the error bar is calculated as:

$$\bar{x} = \frac{\sum_i^n x_i dx_i^{-2}}{\sum_i^n dx_i^{-2}},$$
$$dx = \sqrt{\frac{1}{\sum_i^n dx_i^{-2}}}.$$

Note that the weighted mean currently is not implemented in the external binning library. The external binning library needs to be disabled before the weighted mean can take into effect. For the time channel rebinning, only the arithmetic mean is used for averaging.

Option->Binning Method->Constant Intervals menu provides the option of creating binned data at constant interval. If the option is not set, then averaged values will be the output.

Option->Binning Method->Use External Binning Library menu provides the option of using or disabling the external binning library written in C. If enabled, the external binning library is used when binning steps are specified. Using the external binning library is much faster than without. However, you can disable it if the external library is not properly installed.

Monitor Count

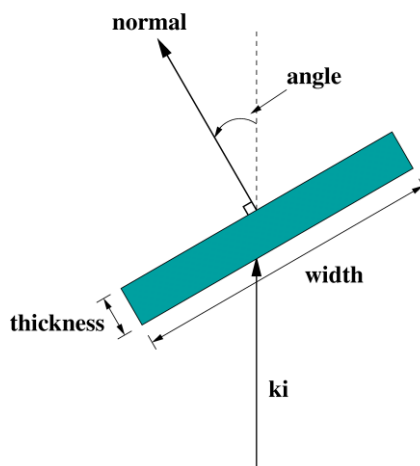
The option **Option->Monitor Count** only applies to DCS and MACS file type.

For DCS, there are two options to calculate the monitor count: sum of beam monitor counts or the integrated intensity of the beam monitor counts after fitted by a Gaussian. The monitor count is used to normalize data in loading DCS files. The monitor type can be selected by **Option->Monitor Count->Monitor Choice**. BM1 is the monitor at the guide exit, and FC0 is the upstream monitor before the choppers. BM1 is the default monitor, and only when it is selected will sum and integrated intensity option matter.

For MACS, the two options for monitor count are automatic and specified. In automatic monitor count, the monitor count of the first file is used to normalize the intensities. A specific monitor count value can also be specified. The default specified monitor count is 1e6 if the monitor type is monitor and 30 seconds if the monitor type is time. The monitor count option can also be set in the file frame below the sample type choice. The monitor type can be selected by **Option->Monitor Count->Monitor Choice**. The monitor lambda/2 correction option is for the higher order neutron correction of the monitor counts. It is applied only when no CFX filter is used. The CFX info in the data file might not have been implemented. If that is the case, the data file will always indicate that no CFX filter is being used. The monitor lambda/2 correction is applied to all monitor types during projection calculation.

Absorption Correction

Absorption corrections for cylindrical, annular, spherical, and flat plate sample geometries are implemented in the program. The correction is for equatorial scattering only. Go to **Option->Absorption Correction** menu to set the option. The absorption correction factor for every angle and energy is calculated using specified number of uniform sampling points on the sample cross section. If interpolation is selected, instead of calculating the correction for all detectors and all time channels, which is time consuming, interpolation from at most 100 angles and at most 100 energies will be used. The effect of DCS radial collimator is not taken into account in the calculation. Below is a sketch of the flat plate sample, the angle as shown in the figure is positive.



To view the transmission of the sample, set the **Option->Absorption Correction->Show Transmission as Intensity** option. Data files need to be loaded for this option to take effect.

Viewing Axis Type

For single crystal and diffuse scattering type, there are two options of viewing axis: orthogonal and arbitrary. They can be set in **Option->Viewing Axis**. If orthogonal option is chosen, the viewing axes given must be orthogonal to each other.

Allow Extra Viewing Axis

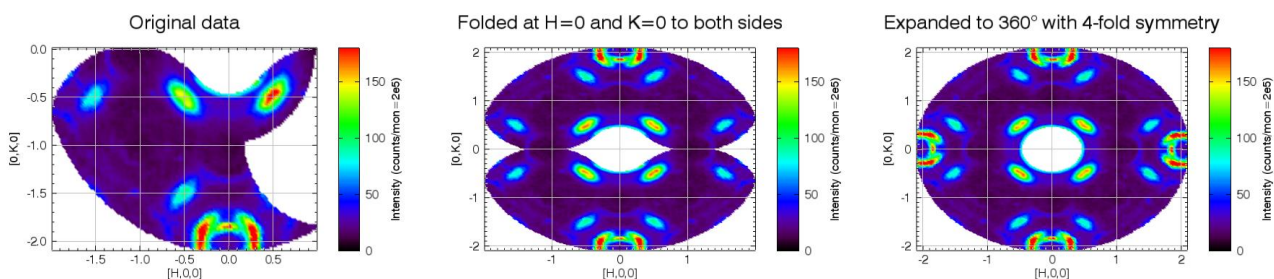
In single crystal and diffuse scattering modes, by default only two viewing axes plus the energy (except for diffuse scattering single energy) are available for projection. To have a third viewing axis, set **Option->Viewing Axis->Allow Extra Viewing Axis** on. The orthogonality of the viewing axes follows the **Option->Viewing Axis** setting. The projection needs to be recalculated.

For DCS, MACS, and WAND, temperature and magnetic field (DCS and MACS only) can be added as the extra viewing axis by setting **Option->Viewing Axis->Allow Temperature as Extra Viewing Axis** on for WAND, and the **Option->Viewing Axis-> Allow Extra Viewing Axis** options for DCS and MACS. A third specified axis is also available for MACS. The data files (not the background files) need to be reloaded if the option is switched on. For the temperature, one can choose to view among sample, control, and set point temperatures for DCS and MACS. The option to average the temperature of each file is to avoid the temperature fluctuations.

Folding of Viewing Axis

There are two types of folding, mirror reflection and symmetry rotation, which can be selected in **Option->Folding Type** menu.

In the mirror reflection type, the folding is around a folding center. The folding center and the folding direction are specified next to the Fold button in the projection window. The auto folding direction is to the side with larger range. Multiple folding centers can be specified in the text box separated by space or comma. Clicking on the direction droplist with multiple folding centers specified will bring up a dialog window for the multiple folding directions. The folding is done in the same order that the centers are specified. To fold into both directions, set the **Option->Folding Type->Mirror Reflection Type->Fold to Both Sides** option. In this option, only one folding center is allowed for each viewing axis.



In the symmetry rotation type, the Q values are rotated by an angle of $360/n_{\text{fold}}$ incrementally if necessary in order to reach the first symmetric section or the first quadrant of the viewing coordinate system. N_{fold} is an integer specified in the n-fold text box next to the Fold button. By default, the first symmetric section starts from u1 viewing axis, but can be changed by **Option->Folding Type->Symmetry Rotation Type->First Symmetric Section Starting Vector->Specify** option. To view the full 360° scattering map based on the symmetry rotation of the existing data, set the **Option->Folding Type->Symmetry Rotation Type->Expand to 360°** option. The full data set is rotated and pasted one or several times to cover the full 360° map.

The projection needs to be recalculated if any of the folding selections is changed.

Show Powder Line

In diffuse scattering mode, Al, Cu, stainless steel, or specified powder lines can be overplotted to the intensity contour plots or detector trajectories (when the viewing axes are x and y axis). To do this, select the Al, Cu, or Stainless Steel option in **Option->Show Powder Line** menu. Arbitrary Q values can also be specified. The projection needs to be recalculated to have the option in effect.

Elastic Peak Position Adjustment

The elastic peak position adjustment operation in **Option->Elastic Peak Position Adjustment** rotates the data so that the maximum intensity(**Automatic**) or the time channel of specified energy(**Specify**) will be shifted to $E=0$. The energy values will not be changed. If **Check the First File Only** option is on, only the first file will be examined for how many time channels need to be shifted. After changing this option, you need to reload the data files.

Empty Can Subtraction Tolerance Method

There are two ways to locate the corresponding empty can data during background subtraction. The first method is to find the ones that are within the specified tolerance or the closest one. The second is

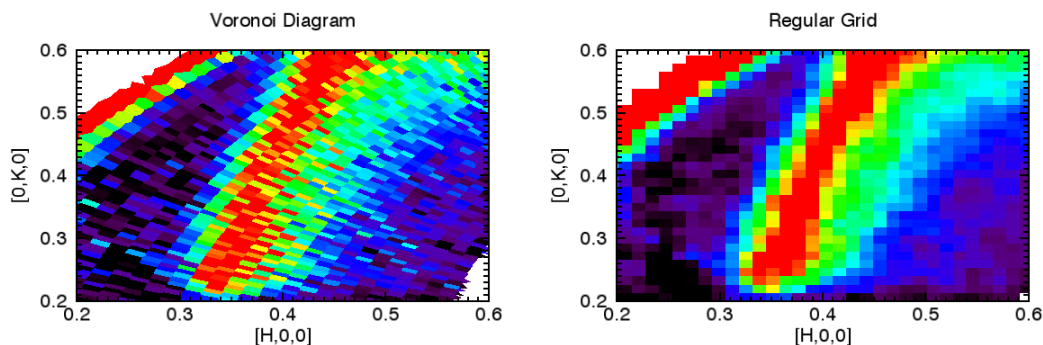
to find the ones that are within the specified tolerance of the closest one. For the first method, if no empty can data is within the specified tolerance, and the closest one is used instead, a warning message will be displayed.

If the empty can files and the sample data cover the same range, the two methods usually will give the same subtraction result. However, if the empty can data and the sample data cover different range, the two methods usually will yield different results. For example, if the empty can are measured at rotation angles of $[11^\circ, 12^\circ, 13^\circ, 14^\circ]$, and the sample at $[1^\circ, 2^\circ, 3^\circ, 4^\circ]$, and the tolerance value is 1° . For the first method (within tolerance or closest), the empty can data for the 1° data will be the 11° one, while for the second method (within tolerance of the closest), the empty can data will be the average of 11° and 12° .

The tolerance values can be changed in **Parameter->Change Empty Can Subtraction Tolerance Value** menu.

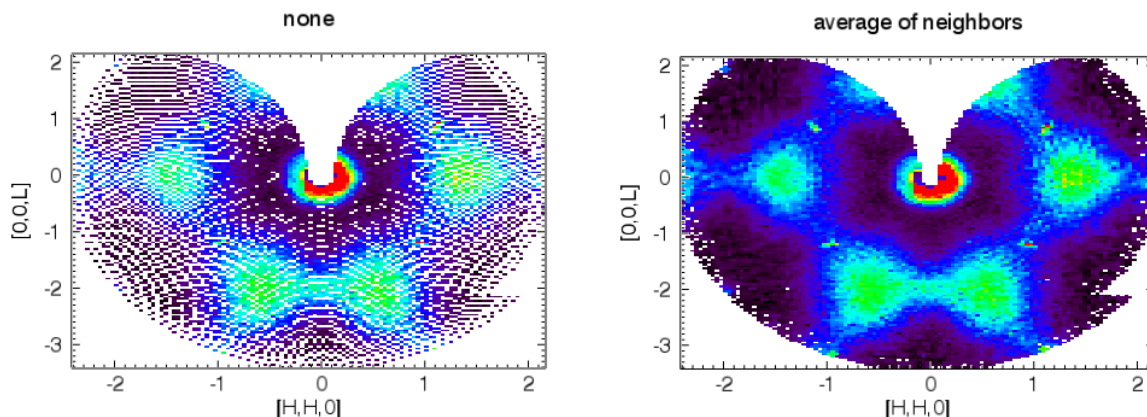
Allow Voronoi Diagram

When plotting a contour slice plot, mslice usually rebins the data to a regular grid format and displays them as connected polygons. The data can also be displayed as Voronoi diagrams without rebinning. The plots with Voronoi diagrams are therefore more natural looking and preserve the distribution density of the raw data. However, using Voronoi diagrams is much slower than dipalying the rebinned data. Below are the examples of a data set drawn with Voroni diagrams and with rebinned regular grid.



Slice Plot Empty Grid Color

Two options are available for rendering the empty grid in a contour slice plot: **none** or **average of neighbors**. Choosing none will leave an empty spot on the plot while using average of neighbors will reduce the number of empty spots. When using the average option, an empty grid with less than two non-empty neighbors will remain empty. Below are the same plot using these two options.



Plot Window Background Color

The background color of the plot windows can be either black or white, selected in **Option->Plot Window Background Color**.

User Macro/Function/Procedure

To interact with the projected data, use the **Option->User Macro/Function/Procedure** menu. Either multiple strings of command macros or a string of call to user defined IDL function or procedure can be specified.

The user macro should be executable IDL statements. Multiple statements can be in a single line separated by “&”. The user function and user procedure can be defined in any way. Only the call to the function or procedure needs to be entered in the menu dialog window. A partial list of the internal variables is shown in the dialog window. The array dimensions of the variables should not be altered. The user functions are executed during projection calculation.

Here are some of the available variables:

qty --- intensity.
err --- error bar.
eief --- Ei for direct geometry(self.instrgeom=0) and Ef for inverse geometry(self.instrgeom=1).
psi --- psi angles, for MACS, it is 90° - A3.
Qv --- wave vector projected onto the viewing axes, in corresponding reciprocal lattice unit.
en --- energy transfer.
Ei --- MACS only.
Ef --- MACS only.
kidney --- MACS only, the kidney angle.
det_tt --- detector 2θ angle.

Tip 1: Specifying the user function after the projection has been calculated will enable the array dimensions of the available variables being shown. The projection needs to be recalculated after the user function is entered.

Tip 2: To do a model calculation, generate *qty* and *err* so that they have the same array dimensions as *Q* in powder mode, or an array dimension of [D2, D3, ...] in single crystal mode, where *Qv* has a dimension of [D1, D2, D3, ...].

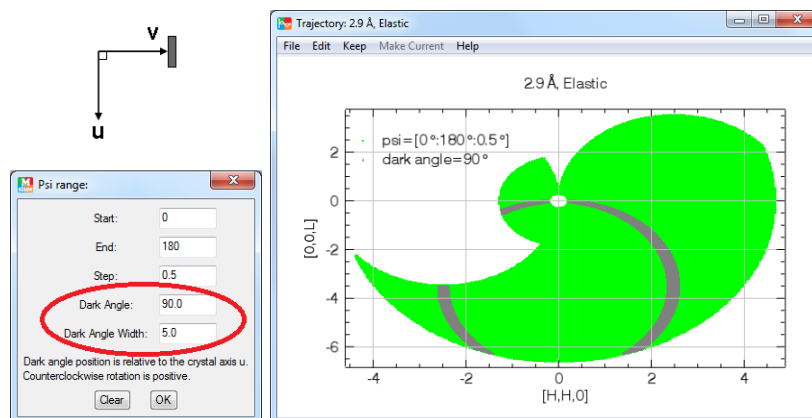
Dark Angle Correction

In diffuse scattering measurement, if the incident neutron intensity is affected by the dark angle of the cryostat or magnet, a simple dark angle correction can be applied by assuming a constant scattering cross section (such as elastic incoherent scattering or vanadium) in specified energy transfer and two theta range. This option is in **Option->Dark Angle Correction**. You can choose the same data files for this purpose. The projection needs to be calculated to have the option in effect. After projection calculation, the overall intensity factor for each corresponding file is given the value of I_{\max}/I , where I is the total neutron counts in the specified E and two theta range.

Show Dark Angle Trajectory

In diffuse scattering modes (single crystal mode for MACS), use this option to show the trajectory of a dark angle of a cryostat in experiment planning. With this option on, when you calculate the projections, in the dialog window for Psi range, there are entries for the dark angle position and dark angle width. The dark angle position is with respect to the crystal orientation axis **u**, with

counterclockwise rotation being positive. The plot shows an example where the dark angle is along v axis.



E-Dependent Detector Efficiency Correction

The energy dependent detector efficiency correction to the intensity can be applied to the data in projection calculation. To set this option on and off, press the **Option->E-Dependent Detector Efficiency Correction** button. The default option is on for DCS, and off for the other file types. This option is only available if the instrument is in direct geometry. When the option is turned on, the detector thickness and helium-3 pressure need to be confirmed. The default values for DCS detectors are 1 cm and 6 atm, and the default values for MACS detectors are 3.773 cm and 3 atm.

Tip: For MACS, even if the instrument is run at inverse geometry, to be able to view data measured at different E_f with the E-dependent detector efficiency correction on, the instrument geometry should be switched to direct.

Hide Error Bar

Choose **Option->Hide Error Bar** to prevent the error bars been passed to the plots (cuts, slices, and volume plots). However, the error bar will still be present in fitting the data.

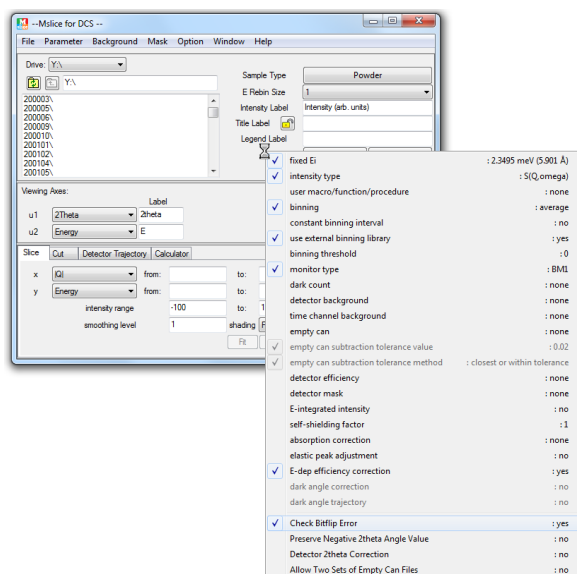
View Spurious

Option-> View Spurious->View Spurion Caused by Detector option will calculate spurious scatterings by the detector wall of all elastic signals. If spurion exists, the program will use the current settings to plot a slice. This option is only available to direct geometry time-of-flight instruments, after data loaded and projection calculated.

Option->View Spurious->View Spurion Caused by Gas Recoil option will calculate gas recoil scatterings from several type of exchange gas in the sample area. There are two options for the calculated $S(Q, \omega)$: T1-T2 or $S(Q, \omega, T)$. If T1-T2 is chosen, and T2 is not present, then $S(Q, \omega)$ of T1 is calculated. If $S(Q, \omega, T)$ is chosen, the temperature range is [T1, T2]. In single crystal mode, the reciprocal space projection is calculated using the parameters in mslice. Gas recoil simulation option is only available to MACS.

Check Bitflip Error

Right-click to the left of **Load Data** button to show the popup menu and this option. Use this option to enable or disable the bitflip error checking during DCS data file loading. This option is only available for DCS file type.



Preserve Negative 2theta Angle Value

Right-click to the left of **Load Data** button to show the popup menu and this option. In powder mode, after the projection is calculated, only the absolute values of the 2theta angles are saved, unless the **Preserve Negative 2theta Angle Value** option is turned on. Except for MACS data, the projection needs to be recalculated to have the new option in effect.

Detector 2theta Correction

Right-click to the left of **Load Data** button to show the popup menu and this option. Use this option to enable or disable the 2theta correction due to the length of the detectors or some other reasons. This option may not be available for some instruments.

Allow Multiple Sets of Empty Can Files

Right-click to the left of **Load Data** button to show the popup menu and this option. Use this option to allow or disallow multiple (up to three) sets of empty can files. If multiple sets are allowed, the empty can subtraction is as follows:

$$I = I_{\text{sample}} - \text{ssfactor} * (\text{factor}_1 * I_{\text{emptycan1}} + \text{factor}_2 * I_{\text{emptycan2}} + \text{factor}_3 * I_{\text{emptycan3}}),$$

where ssfactor is the [self-shielding factor](#), and factor₁, factor₂, and factor₃ are extra factors that can be changed in **Parameter->Change Multiple-Set Empty Can Factors**. If only one set of empty can files are loaded, factor₁ is 1.0. The handling of the additional sets of empty can files is the same as that of the first set.

Lock Lattice Parameters and Crystal Orientation Axes

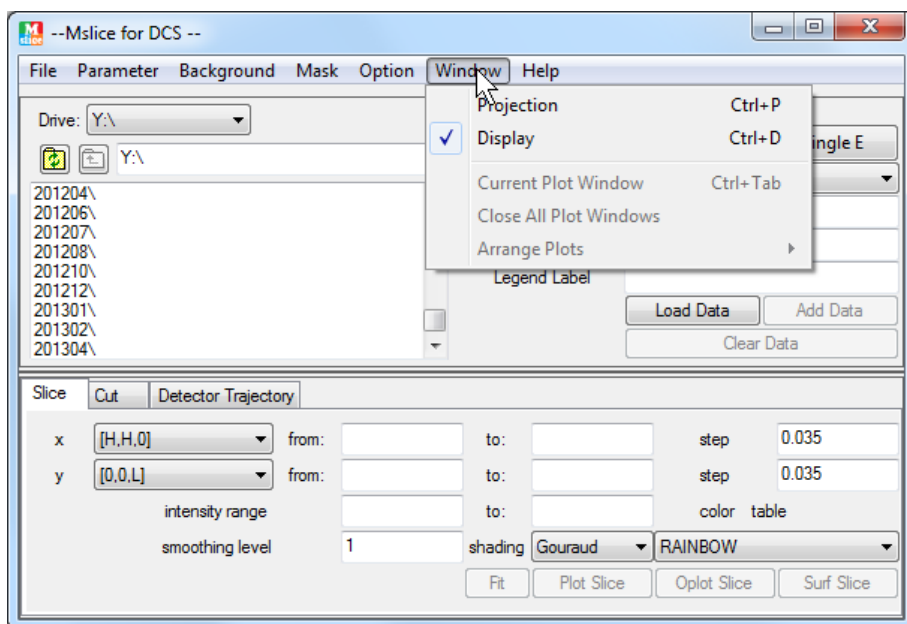
Right-click to the left of **Load Data** button to show the popup menu and this option. This option will only appear in the MACS file type. If this option is set, loading MACS files will not automatically enter the lattice parameters and scattering plane axes information from the file to the projection window.

Check Lattice Parameters and Crystal Orientation Axes in Files

Right-click to the left of **Load Data** button to show the popup menu and this option. This option will only appear in the MACS file type. If this option is set (default), while loading multiple MACS files, the program will automatically check the lattice parameters and crystal orientation axes info in the files to see if the files are consistent with each other. An error will occur if they are not consistent. To bypass the check, simply disable this option.

Hiding Part of the Window

The projection and the display frame of the window can be hidden by using the corresponding option in **Window** menu. This can be quite useful if the size of the window is larger than the screen. The following snapshot is an example.



Close All Plot Windows

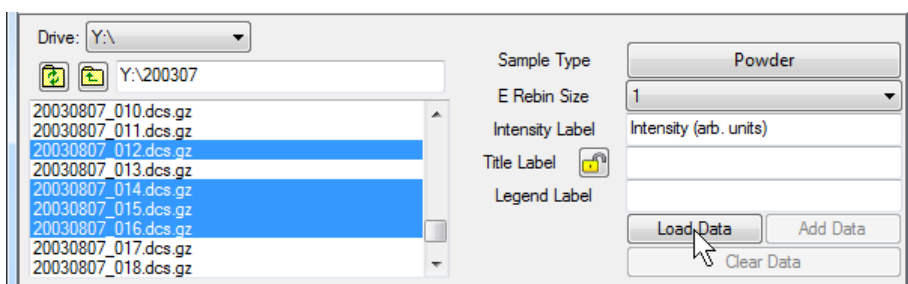
To close all plot windows, simply press **Window->Close All Plot Windows** button.

Load Data

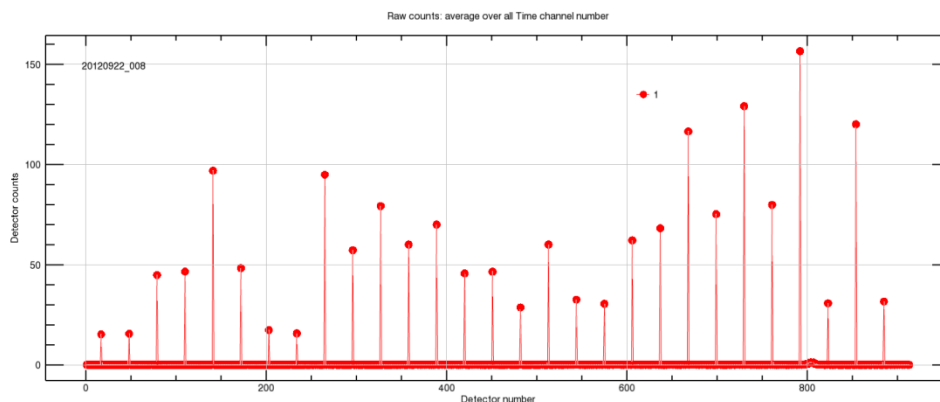
To load data files, use the top left file locator to select one or more files. Press **Load Data** button to load the data. An error will be displayed if no file is highlighted. For DCS data, the data will be normalized by the monitor counts of beam monitor 1 if shutter is open. For MACS data, the data will be normalized by the monitor counts in the projection calculation.

For *powder* and *single crystal* sample type, the files will be combined. For *diffuse scattering* sample type, files are not combined, and energy range needs to be specified beforehand. For file types other than DCS, weights are required for proper data summation.

The loaded data will not be modified by the program until new data file is loaded or added, or the sample type is changed to or from *diffuse scattering* types. Press **Clear Data** button to remove the data from memory.



For DCS data, on very rare occasions a warning message of “jumpy” file will appear. The “jumpy” data are due to electronic noise of the data acquisition system. Please discard these files after they are confirmed, or [patch](#) them if .sht files have been created during data collection. The intensity plotted against the detector number will look like:



Tip 1: For supported file types, move the cursor over the highlighted files and right click to view the file information such as comment, wavelength, temperature, etc.

Tip 2: Move the cursor to the left of the **Load Data** button and right click to access the extra options in the popup menu and view a list of the current settings of parameters.

Tip 3: If the computer can access internet ftp sites, the NCNR data ftp site will be shown as a separate drive in windows platform, or a directory named “NCNR_ftp” in the root directory in unix platforms. You can also use the copy ftp files tool in the file tools menu to download files from the NCNR ftp server. If the ftp directory doesn’t appear, set the working directory to a writeable directory from the menu **Parameter->Set Working Directory**, which ensures that the temporary ftp files can be properly buffered.

Add Data

The **Add Data** button will be activated when data has been loaded.

Select the data files to be added by the upper left [file locator](#). Then press the **Add Data** button. An error will be displayed if the file selected and the existing data are of different type. The criteria for DCS files are wavelength, master speed, speed ratio, resolution mode, and tsdmin.

For *powder* and *single crystal* data, the data are added to existing data; for *diffuse scattering* sample types, the data are appended to the existing data. The algorithm for computing added intensity (I) and error (dI) with weights (W) taken into account is as follows:

$$I_3 = (I_1 * W_1 + I_2 * W_2) / (W_1 + W_2),$$

$$dI_3 = \sqrt{(dI_1 * W_1)^2 + (dI_2 * W_2)^2} / (W_1 + W_2),$$

$$W_3 = W_1 + W_2.$$

Clear Data

Press **Clear Data** to clear from memory the loaded data and calculated projection data if existed. This operation is useful in planning experiments.

Sample Type

There are four sample types (more accurately modes of operation): *powder*, *single crystal*, *diffuse scattering single E*, and *diffuse scattering multiple E*.

For **powder** mode, two [viewing axes](#) need to be specified. In the projection calculation, detectors with the same two-theta angle are combined. The data is plotted as 2D intensity color map on the plane defined by the viewing axes. The data can also be cut along one of the two viewing axes with restrictions on the other axis, and plotted as 1d plot.

For **single crystal** and **diffuse scattering** modes, [lattice parameters](#), [crystal orientation](#), and [viewing axes](#) need to be given to enable proper projection calculation. By default two viewing axes are available. To enable a third viewing axis, check **Option->Allow Extra Viewing Axis**. Except for **diffuse scattering single E** mode, the energy is also present as one axis. The data is plotted as 2D intensity color map on the plane defined by two of the axes (including the viewing axes and the energy if available). The other axes are used to restrict the slice range. The data can also be cut along one of the viewing axes with restrictions on the other axes, and plotted as a 1d plot.

For **single crystal** mode, the specified psi value is applied to all files, while in the **diffuse scattering** modes the specified psi value only corresponds to the first file. **Single crystal** mode, where all files are treated as having the same rotation angle, is actually a special case of the **diffuse scattering multiple E** mode.

The difference between diffuse scattering single E mode and multiple E mode is the treatment of the energy dimension. In single E mode, data within the specified energy range are combined to a single energy to save computer memory, while in multiple E mode, the data are not combined, which could sometimes lead to memory problem. If error occurs due to lack of computer memory, the solution is to reduce the specified energy range, increase the E-rebin size, or switch to single E mode.

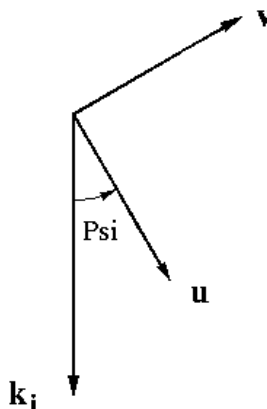
When the sample type is changed, the projection data is cleared and need to be recalculated before any plots can be made. The raw data is still stored in the memory if the change is between *powder* and *single crystal* type.

Lattice Parameters

For *single crystal* and *diffuse scattering* sample types, the direct lattice parameters of the unit cell are specified by **a**, **b**, **c**, **α**, **β**, and **γ**. **α** is the angle between **b** and **c**, **β** is the angle between **c** and **a**, and **γ** is the angle between **a** and **b**. An error will be displayed during projection calculation if any one of the six lattice parameters is missing.

Crystal Orientation

For *single crystal* and *diffuse scattering* sample types, the crystal orientation with respect to the spectrometer is defined by two reciprocal crystal axes (**u** & **v**) in the principal scattering plane of the spectrometer and one angle (Psi), which uniquely identifies the rotation of the crystal in this plane.



(**ux**, **uy**, **uz**) and (**vx**, **vy**, **vz**) specifies the two *reciprocal* crystal axes. $u \times v$ should point to the vertically *upward* direction. **Psi** is the angle between u and k_i , and is positive if $k_i \times u$ is pointing to the vertically upward direction. For DCS file type, it should be the same as DCS A2 angle if A2 is set to 0° when k_i is parallel to u . For *diffuse scattering*, Psi is the angle for the first file.

For MACS file type, since the sample rotation angle A3 is saved in the data file, the Psi text box in the projection window is instead used for the A3 offset angle. The actual Psi angle is $90^\circ - (A3 + \Psi)$.

An error will be displayed in projection calculation if any value of u , v , or Psi is not set.

Viewing Axes

Powder

The viewing axes for *powder* are two axes out of (Energy, $|Q|$, 2Theta, and Det Group Number). They can be specified from the droplists. The labels of the viewing axes are used as corresponding axes titles in the 2d plots. The Most commonly used set of viewing axes for powder sample is $u1 = |Q|$ and $u2 = \text{Energy}$.

Single Crystal and Diffuse Scattering

The viewing axes for *single crystal* and *diffuse scattering* are wave vector directions. They must be orthogonal if the orthogonal option is chosen for the [viewing axis type](#). An example is:

$$\begin{aligned} u1 &= [1 \ 0 \ 0] && ;a^* \\ u2 &= [0 \ 1 \ 0] && ;b^* \end{aligned}$$

An error message will be displayed in projection calculation if any value of the viewing axes is not given or the axes are not orthogonal when required.

The viewing axes can be folded based on the [folding types](#). In the mirror reflection type, the folding is around a folding center. The auto folding direction is to the side with larger range. Multiple folding centers can be specified in the text box separated by space or comma. Clicking on the direction droplist with multiple folding centers specified will bring up a dialog window for the multiple folding directions. The folding is done in the same order that the centers are specified. In the symmetry rotation type, the Q values are rotated by an angle of $360/n_{\text{fold}}$ incrementally if necessary in order to

reach the first quadrant of the viewing coordinate system. N_fold is an integer specified in the n-fold text box. The projection needs to be recalculated if any of the folding selections is changed.

Energy Rebin

To reduce the amount of data being processed and plotted, the raw data can be rebinned in the projection calculation for *powder*, *single crystal*, and *diffuse scattering multiple E* modes. Time channels are binned according to the size specified in the **E Rebin Size** textbox. No action is taken if the E rebin size is less than one or absent. The rebinning can be either average or sum according to the specified [binning method](#). In *powder* and *single crystal* modes, the raw data is not affected by the rebinning, therefore changing the rebin size requires only the projection to be recalculated. In *diffuse scattering multiple E* mode, the raw data are rebinned, therefore changing the rebin size requires reloading the data.

Calculate Projection

Press **Calculate Projections** button to project the raw data into viewing axes. Detector masks and detector efficiency factors are applied if they are present. The background will also be subtracted if they have been previously loaded. Intensity data are also rebinned if [E rebin size](#) is greater than 1 for *powder* and *single crystal* modes. The intensity will be calculated as one of several options chosen in **Option->View Intensity As** menu. Energy dependent detector efficiency will be calculated if the option is set. Absorption correction factors will be calculated and multiplied to the intensity if so chosen. User function will also be executed if specified. The projected data and the raw data are stored differently, i.e., the raw data are not changed by this calculation. If no data has been loaded, the program will prompt for incident neutron energy E_i to calculate detector trajectories.

For *powder* mode, detectors with the same 2theta angle will be combined.

For *diffuse scattering* modes, data with the same sample orientation angles will be combined.

For *single crystal* and *diffuse scattering* modes, an error message will be displayed if any value of the lattice parameter, crystal orientation, and viewing axes is not given, or if the viewing axes are not orthogonal when required.

Tip: For NXSPE file type, clearing data after loading an existing data file will save the detector information, which allows for the projection calculation.

Intensity Label

The intensity label is used as the axis title for intensity in plots. If not given, the default is *Intensity*. IDL formatting codes are supported.

Title & Legend Labels

The title label is used as title in plots. It is set to the comment of a data file after the file is loaded. If the comment ends with “T=”, the temperature set point will be automatically appended to the title label.

The legend label is used as the legend in plotting 1D cuts. It is set to the last word of the comment of the data file after it is loaded, or various pieces of information such as temperature in the comment.

The plot title and legend can be easily modified in the plot window. IDL formatting codes are supported for the title and legend labels.

Tip: To prevent the title and legend labels from being updated after loading a data file, click the lock image button next to the title legend. Click it again to allow the title and legend labels to be reset.

2D Slice Plot

The intensity data projected into two viewing axes can be plotted as color contour plot by pressing the **Plot Slice** button.

The x and y axes are chosen from the x and y droplists. In *Single Crystal* and *Diffuse Scattering* modes, the droplist includes the viewing axes and the energy and temperature if available. The axes left in the droplist can be used to further define the thickness of the slice.

Data can be rebinned by specifying the x and/or y **step**. If not specified, the default binning size is 1000 except for energy data. The binning algorithm is as follows: a grid of bins of size $xstep \times ystep$ is constructed with the lower left corner at $(xmin-xstep/2, ymin-ystep/2)$ and not exceeding $xmax+xstep/2$ along x and $ymax+ystep/2$ along y. The x and y values for each bin are calculated by taking the average of the x and y values of all the data in that bin, and the intensity is the average or sum of all the data in that bin according to the specified [binning method](#). The limits are inclusive to the left and exclusive to the right.

The grid can be smoothed by choosing a nonzero **Smoothing level**. The smoothing is done by convoluting the rebinned data with a smoothing kernel. The default smoothing kernel is

```
0.1  0.2  0.1
0.2  0.8  0.2
0.1  0.2  0.1 .
```

The kernel can be [changed](#) in the **Parameter** menu.

The color map of the contour plot can be chosen from the **color map** droplist. The names are the same as the predefined IDL color table names.

Two types of shading are available: *Flat* and *Gouraud*.

Flat: The color has a constant intensity for each face of the surface, based on the normal vector.

Gouraud: The colors are interpolated between vertices, and then along scan lines from each of the edge intensities.

The 2D data can also be plotted as color surface plots by pressing the **Surf Slice** button.

Tip 1: Specify the horizontal and vertical range to reduce the amount of data and speed up the plotting.

Tip 2: If the energy step is not specified, the original energies corresponding to the time channels are used. This will prevent the energy values from being changed by the binning process.

Tip 3: For a large dataset, the binning will usually be much faster with the steps specified.

Tip 4: In the plot window, right click over an object to change its properties.

Tip 5: Leave both the horizontal and vertical step blank to plot the slice using Voronoi diagrams. The plot is more natural but much slower than rebinned regular grid plot. The [Allow Voronoi Diagram](#) option needs to be set to Yes in the option menu.

1D Cut

Cuts can be made along one of the viewing axes with integration over the other one or two viewing axes. Use **along** droplist to select the x axis, and **y** droplist to select the y axis. The plotted data are the average or summed values over the integrated volume according to the specified [binning method](#).

X and y range, integration volume (thickness) can be specified by the **from:** and **to:** textboxes. Data can also be rebinned by specifying the cut **step**. The x-range is divided into bins of length *step* starting at $x_{\min} - \text{step}/2$ and not exceeding $x_{\max} + \text{step}/2$. The x and y value for each bin is calculated by taking the simple average of the x and y values of all data in that bin, where the limits are inclusive to the left and exclusive to the right.

Plot **symbols** can be specified by the color, symbol style, and line style droplists. White color will be switched to black when the figure is printed or saved as a file. Press **Plot Cut** to plot the cut in the current plot window, or press **Oplot Cut** to overplot the cut in the current plot window.

The cut data can also be sent to the Peak Analysis (PAN) program for fitting. To do this, simply press the **Fit** button.

Tip 1: If the cut is along energy and the step is not specified, the original energies corresponding to the time channels are used. This will prevent the energy values from being changed by the binning process.

Tip 2: For a large dataset, the binning will usually be much faster with the step specified.

Tip 3: In the plot window, right click over an object to change its properties.

3D Volume Plot

A volume plot can be made if the number of viewing axes (including the energy and temperature if available) is more than two. Proper steps need to be specified to achieve the ideal result. There are two interpolation methods: nearest neighbor and trilinear. The trilinear method gives a smoother look, but slower in rendering.

Tip 1: In the plot window, right click over an object to change its properties.

Tip 2: In the plot window, when slicing a volume, use the keyboard arrow keys to move step by step.

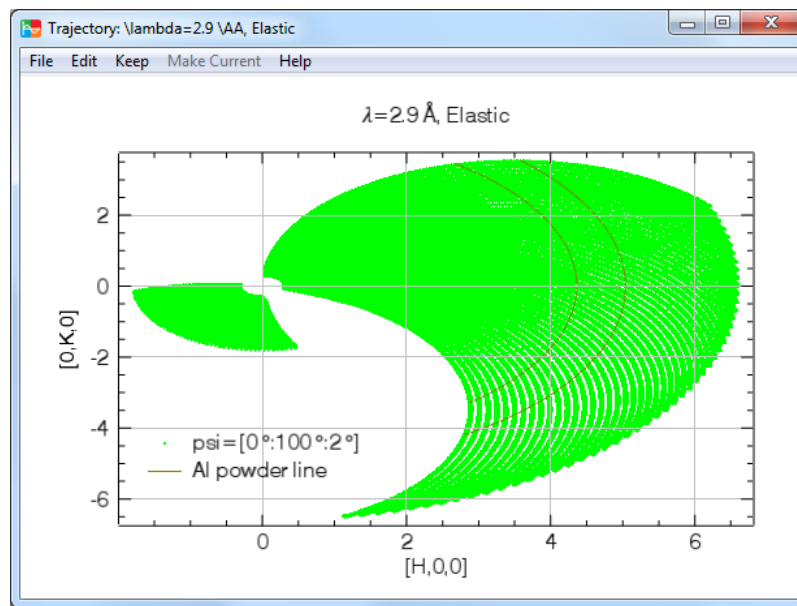
Fitting Data

Both the slice data and cut data can be sent to PAN program for fitting by pressing the **Fit** button.

Plot Trajectories

The **Plot Trajectories** button is insensitive until projection is calculated. The projection can be calculated without loading any data.

Detector trajectory is an x vs. y 1d plot. Both x and y are chosen from droplist. If None is chosen, the detector group number is used. Extra thickness can be used to restrict the range of data in other dimension. If no ranges are set for x, y, and extra thickness, the default is to show all possible data. The following is an example in diffuse scattering mode. The dark yellow lines denote the aluminum powder line.



Oplot Trajectories button is used to overplot the trajectory in the current plot window. The button is insensitive until the projection is calculated and in certain sample modes.

