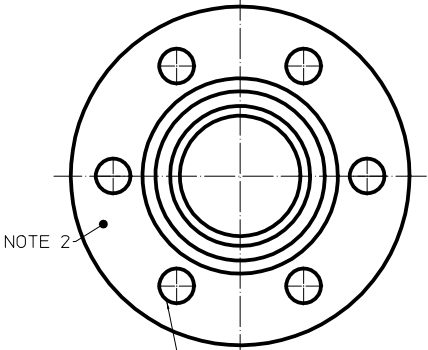
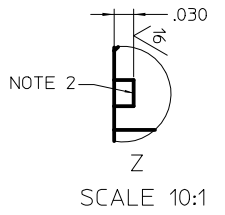
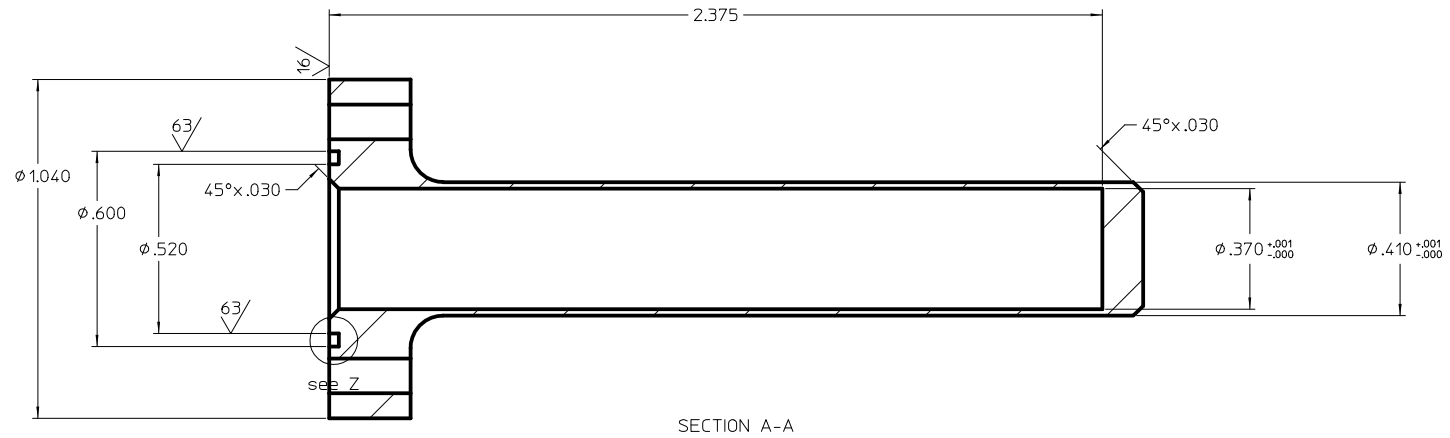
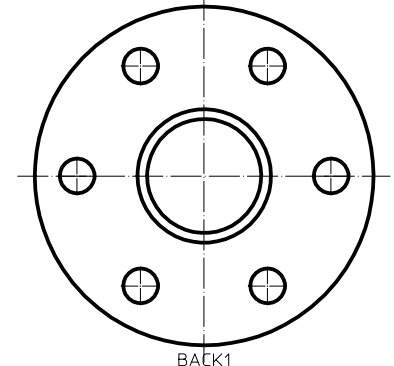
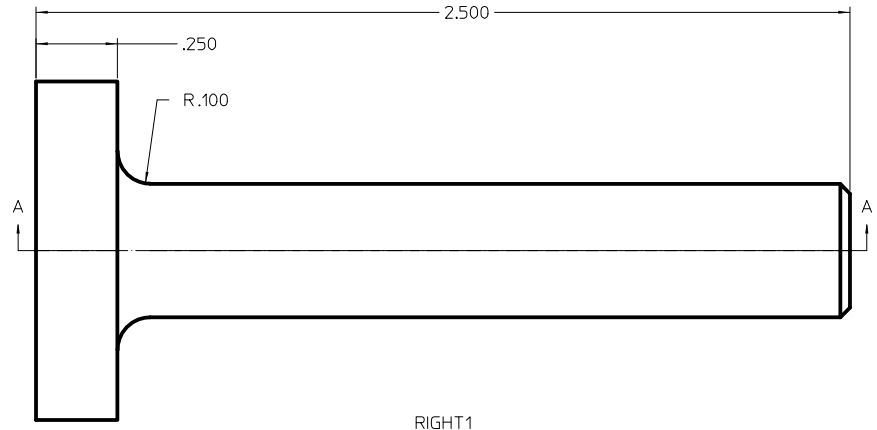


REVISIONS			
NO.	ZONE	ECN	CHANGE
1			



6X 6-32 UNC-2B THRU
EQ. SP. ON A Ø.780 B.C.



NOTES:

- BREAK CORNERS .005 TO .01
- SEALING SURFACE. DO NOT MAR, DENT OR OTHERWISE DAMAGE THIS SURFACE.
- PARTS TO BE INDIVIDUALLY PACKAGED IN A MANNER TO PREVENT DAMAGE DUE TO NORMAL HANDLING DURING SHIPPING.

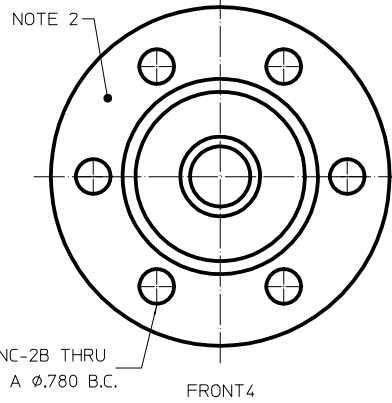
Made from Copper

MATERIAL SPECIFICATION		DRAWING APPROVALS		VALDES STANDARD SPECIFIED DIMENSIONS AND UNITS UNLESS OTHERWISE INDICATED		NIST National Institute of Standards and Technology U.S. Department of Commerce		CENTER FOR NEUTRON RESEARCH 100 BURGLAR DRIVE GASTHERSBURG, MD 20884	
DATE	ISSUED	DATE	DATE	UNITS	UNITS	UNITS	UNITS	UNITS	UNITS
DATE	DATE	DATE	DATE	UNITS	UNITS	UNITS	UNITS	UNITS	UNITS
MODEL DATA		DRAWING DATA		DO NOT SCALE DRAWING					
MODEL NAME	MODEL NUMBER	SCALE	DATE	DESIGNER	DRAWN	CHECKED	DATE	SCALE	DATE
DILUTION FRIDGE 3.83 CC SAMPLE CAN		5:1	6/2/12 1:59 AM	Mercedes Castello					
PROJECT	VERSION	SHEETS	DATE	PART NUMBER	SCALE	SCALE	DATE	SHEET	DATE
DILUTION FRIDGE 3.83 CC SAMPLE CAN	1	1	6/2/12 1:59 AM		5:1	5:1		1 of 1	
THRU HOLE PRECISION	DATE	DATE	DATE	MAIL ADDRESS	DRAW. WT.	ACT. WT.	RELEASE DATE		
	6/2/12 1:59 AM	6/2/12 1:59 AM	6/2/12 5:23 PM	mercedes.castello@nist.gov					

014-1226

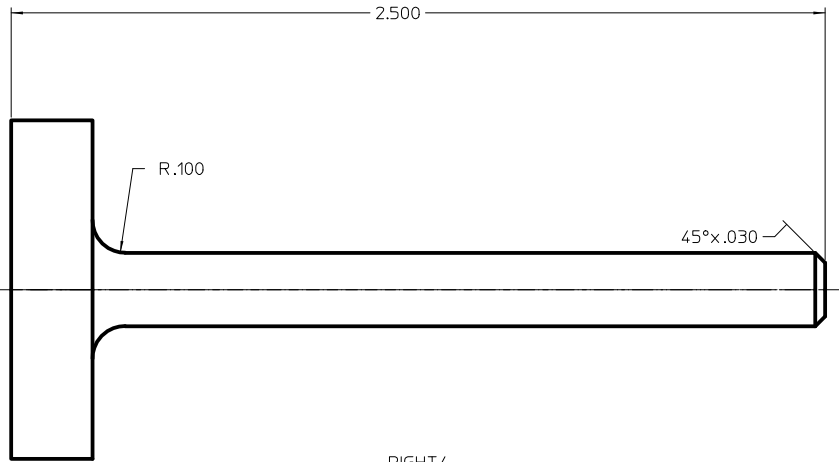
DM & TOL, PER ANSI Y14.5M-1982

REVISIONS				CHANGE	DATE
1					

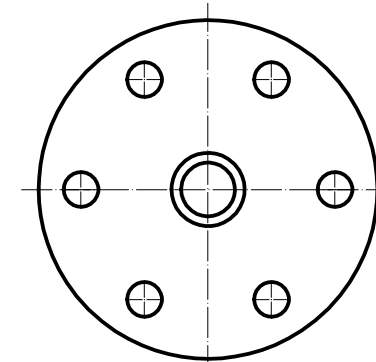


6X 6-32 UNC-2B THRU
EQ. SP. ON A Ø.780 B.C.

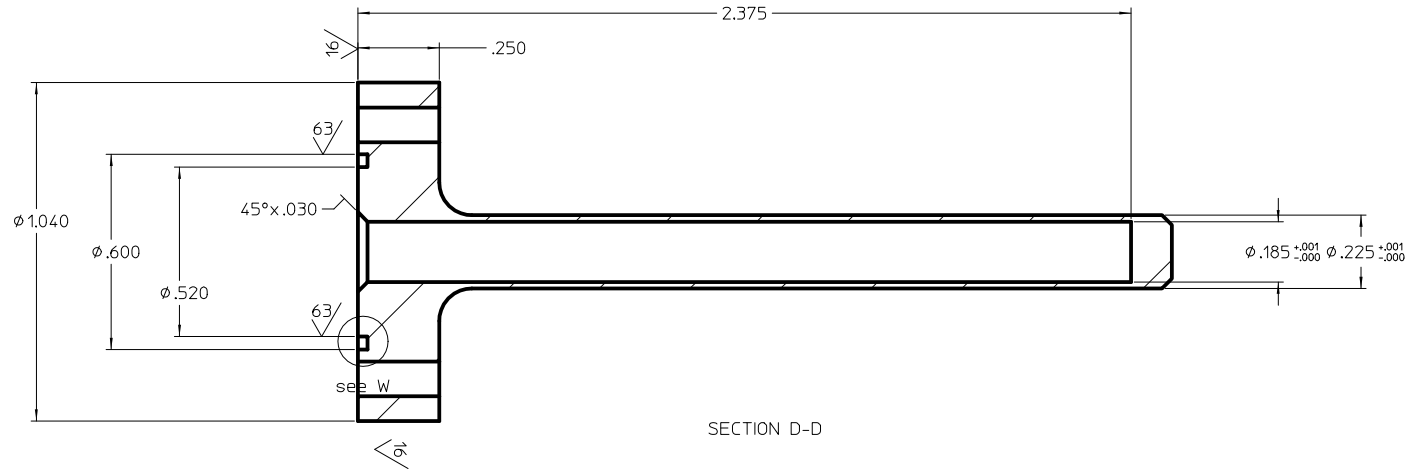
FRONT4



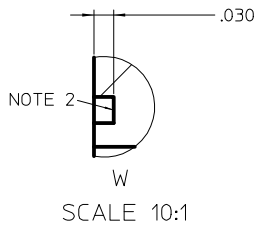
RIGHT4



BACK4



SECTION D-D



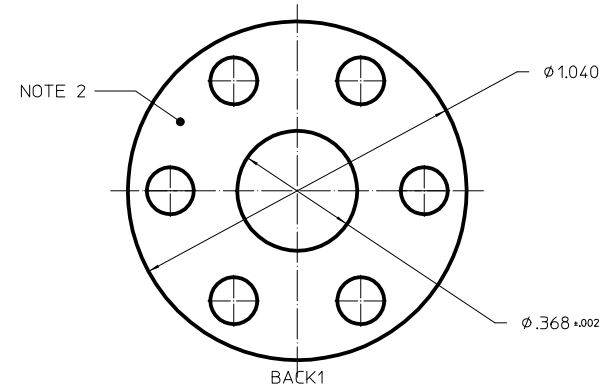
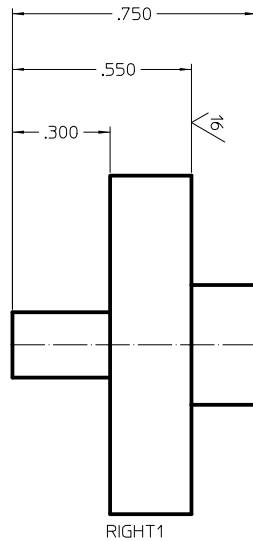
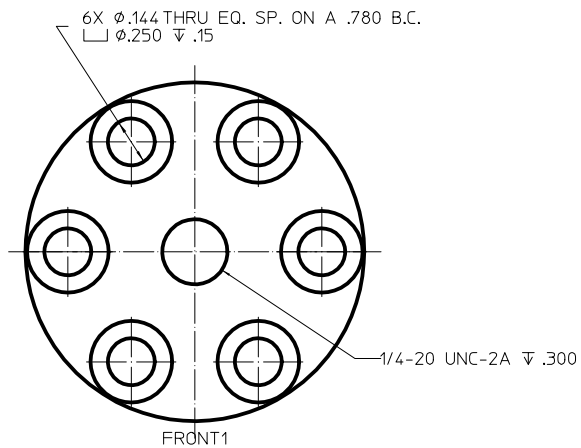
SCALE 10:1

- NOTES:
1. BREAK CORNERS .005 TO .01
 2. SEALING SURFACE, DO NOT MAR, DENT OR OTHERWISE DAMAGE THIS SURFACE.
 3. PARTS TO BE INDIVIDUALLY PACKAGED IN A MANNER TO PREVENT DAMAGE DUE TO NORMAL HANDLING DURING SHIPPING.

Made from Copper

MATERIAL SPECIFICATION		DRAWING APPROVALS		VALDES CHANGES SPECIFIED		NIST		CENTER FOR NEUTRON RESEARCH	
PART NO.	SIZE	DATE	DATE	DATE	DATE	DATE	DATE	DATE	DATE
DILUTION FRIDGE .95 CC SAMPLE CAN		6/2/12 1:18 PM		6/2/12 1:18 PM		Mercedes Costello		014-1228	
DILUTION FRIDGE .95 CC SAMPLE CAN		6/2/12 1:18 PM		6/2/12 1:18 PM		Mercedes Costello		014-1228	
DILUTION FRIDGE .95 CC SAMPLE CAN		6/2/12 1:18 PM		6/2/12 1:18 PM		Mercedes Costello		014-1228	
DILUTION FRIDGE .95 CC SAMPLE CAN		6/2/12 1:18 PM		6/2/12 1:18 PM		Mercedes Costello		014-1228	

REVISIONS				
NO.	ZONE	ECN	CHANGE	DATE
1				

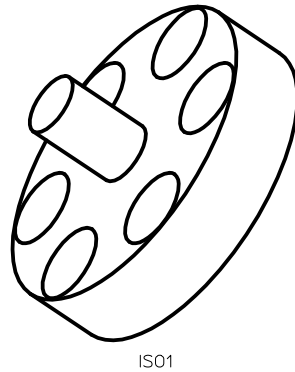
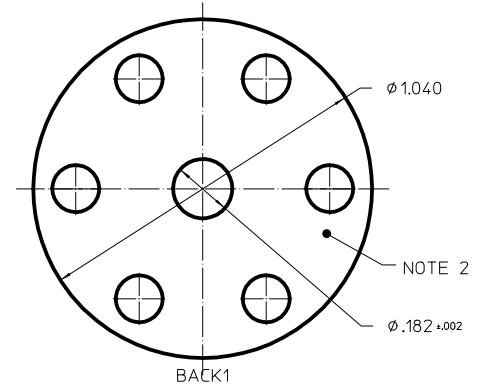
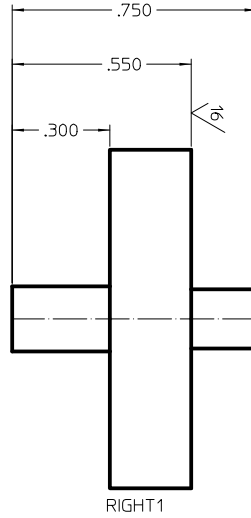
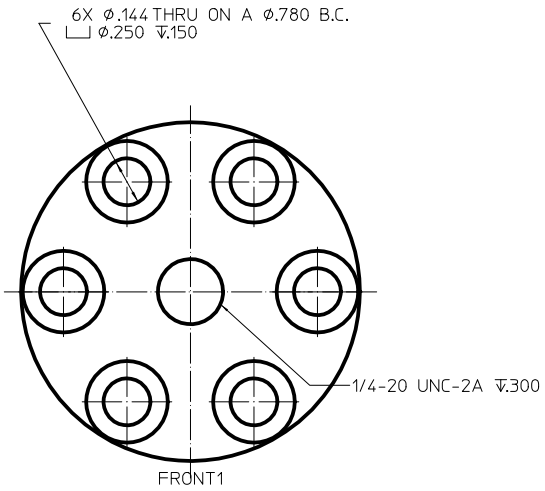


- NOTES:
1. BREAK CORNERS .005 TO .01
 2. SEALING SURFACE. DO NOT MAR, DENT, OR OTHERWISE DAMAGE THIS SURFACE.
 3. PARTS TO BE INDIVIDUALLY PACKAGED IN A MANNER TO PREVENT DAMAGE DUE TO NORMAL HANDLING DURING SHIPPING.

Made from Copper

MATERIAL SPECIFICATION		DRAWING APPROVALS		UNLESS OTHERWISE SPECIFIED DIMENSIONS ARE IN INCHES		NIST		CENTER FOR NEUTRON RESEARCH	
UNITS	CONVERT	DATE	DATE	INCHES	FRACTIONS	INCHES	FEET	NO. BUREAU OFFICE	GATEWAY NO. 2000
IN	MM			1/16"	1/32"	1/8"	1/4"		
FRIDGE LID LARGE DIAMETER		DATE: 6/2/02 5:02 PM		DRAWING DATA		DO NOT SCALE DRAWING		FRIDGE LID LARGE DIAMETER	
PROJECT: FRIDGE LID LARGE DIAMETER		DATE: 6/2/02 3:03 PM		DESIGN: 1		SHEETS: 1		FOR: D	
DRAWN BY: [Symbol]		DATE: 6/2/02 5:02 PM		DESIGNER: Mercedez Costello		SCALE: 5:1		RELEASE DATE: 014-1230	
CHECKED BY: [Symbol]		DATE: 6/2/02 5:03 PM		DRAWN BY: [Symbol]		SCALE: 5:1		SHEET: 1 of 1	
MATERIAL: [Symbol]		DATE: 6/2/02 5:03 PM		DRAWN BY: [Symbol]		SCALE: 5:1		DIM. & TOL. PER ANSI Y14.5M-1982	

REVISIONS			
NO.	ZONE	ECN	CHANGE
1			



NOTES:
 1. BREAK CORNERS .005 TO .01
 2. SEALING SURFACE. DO NOT MAR, DENT, OR OTHERWISE DAMAGE THIS SURFACE.
 3. PARTS TO BE INDIVIDUALLY PACKAGED IN A MANNER TO PREVENT DAMAGE DUE TO NORMAL HANDLING DURING SHEPPING.

Made from Copper

MATERIAL SPECIFICATION	DRAWING APPROVALS	UNLESS OTHERWISE SPECIFIED DIMENSIONS ARE IN INCHES	NIST	CENTER FOR NEUTRON RESEARCH
MODEL DATA TITLE: DIL FRIDGE SMALL DIAMETER PART NO: 014-1231 DATE: 6/2/12 3:00 PM DESIGNED BY: [Signature] CHECKED BY: [Signature] DATE: 6/2/12 4:43 PM DRAWN BY: [Signature] DATE: 6/2/12 4:43 PM PART UPDATE BY: [Signature] DATE: 6/2/12 4:28 PM	DESIGNED BY: [Signature] DATE: 6/2/12 4:43 PM CHECKED BY: [Signature] DATE: 6/2/12 4:43 PM DRAWN BY: [Signature] DATE: 6/2/12 4:43 PM PART UPDATE BY: [Signature] DATE: 6/2/12 4:28 PM	DIMENSIONS ARE IN INCHES FRACTIONS: 16/1024 DECIMALS: 0.0005 ANGLES: 10	NIST National Institute of Standards and Technology U.S. Department of Commerce 100 BUREAU DRIVE GAITHERSBURG, MD 20899	CENTER FOR NEUTRON RESEARCH 100 BUREAU DRIVE GAITHERSBURG, MD 20899
DO NOT SCALE DRAWING			FOR: DIL FRIDGE SMALL DIAMETER	
SCALE: 5:1 DIM. & TOL. PER ANSI Y14.5M-1982			SHEET: 1 of 1 PART NUMBER: 014-1231 RELEASE DATE:	