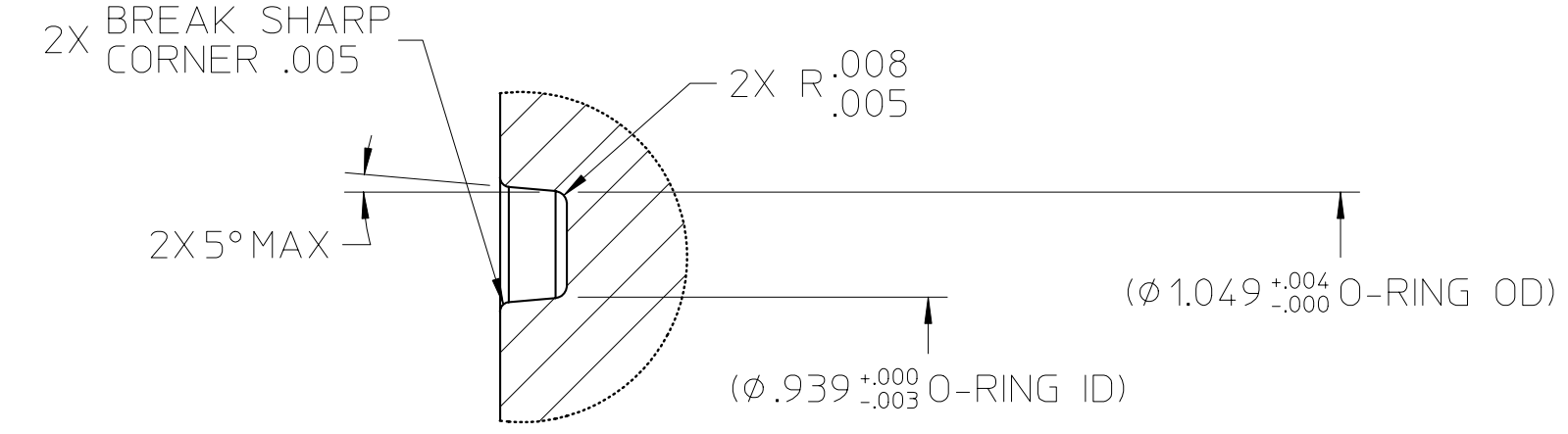
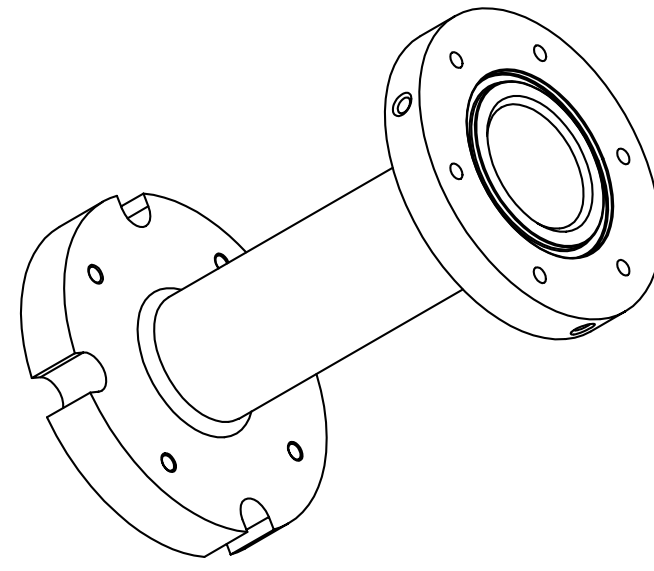
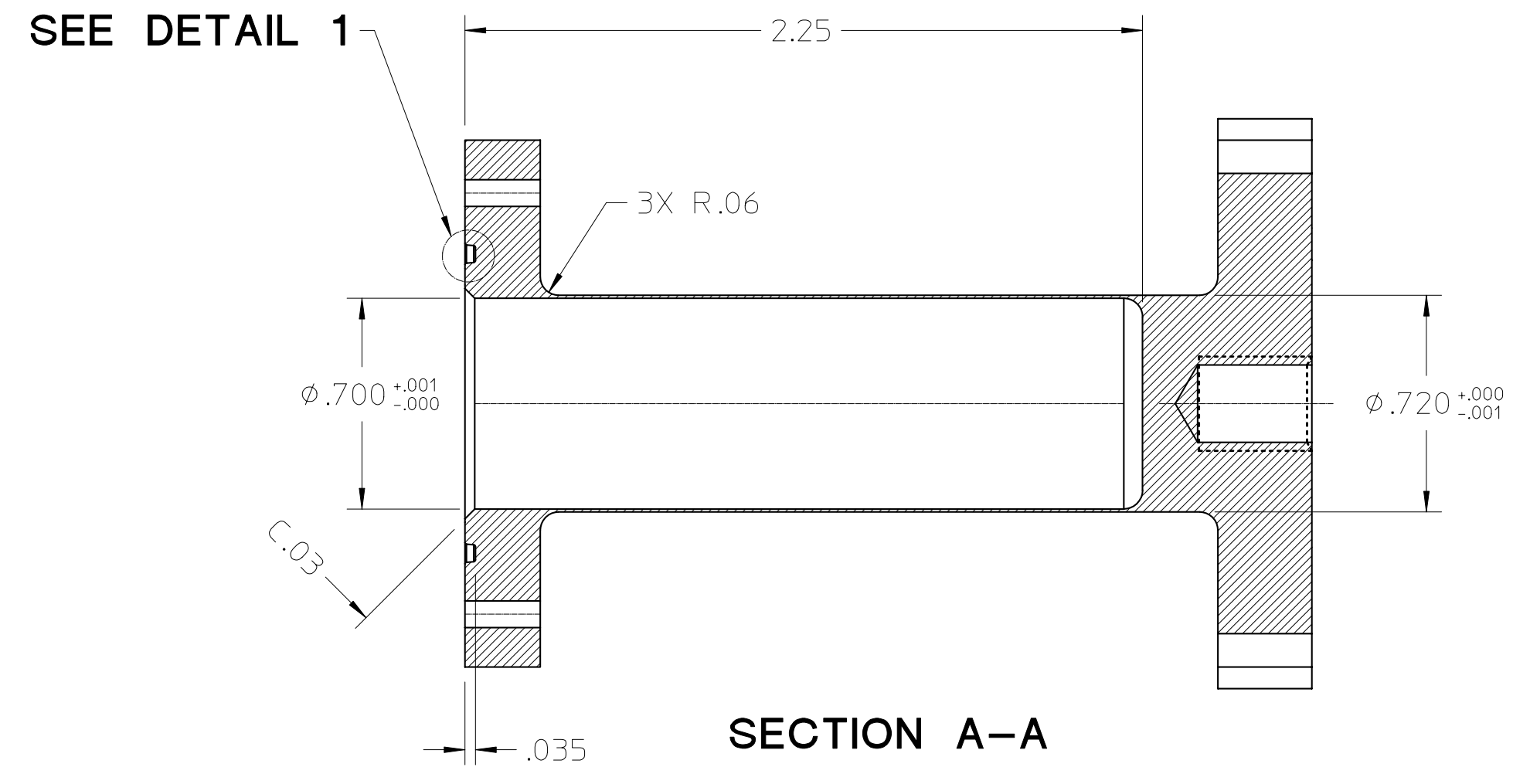


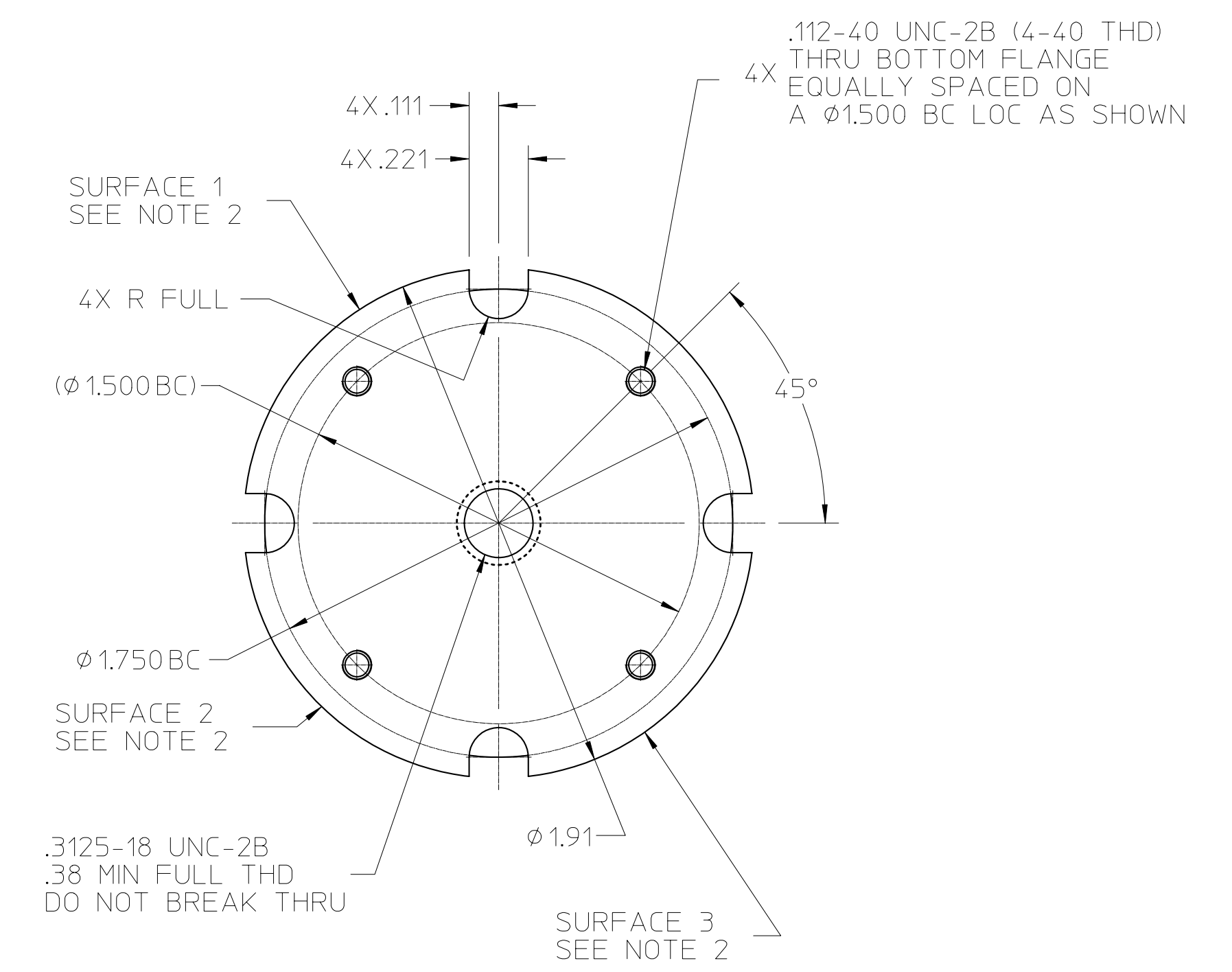
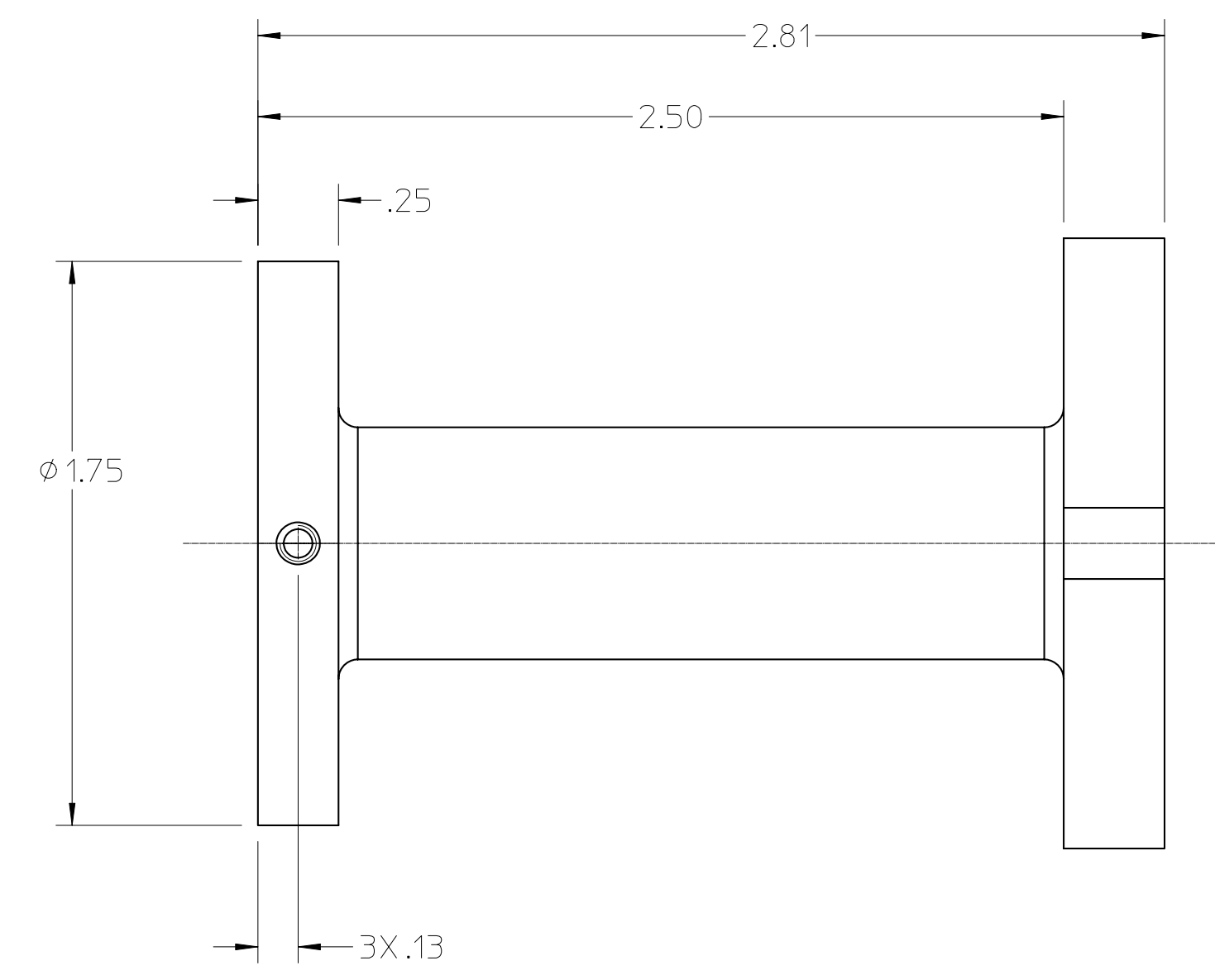
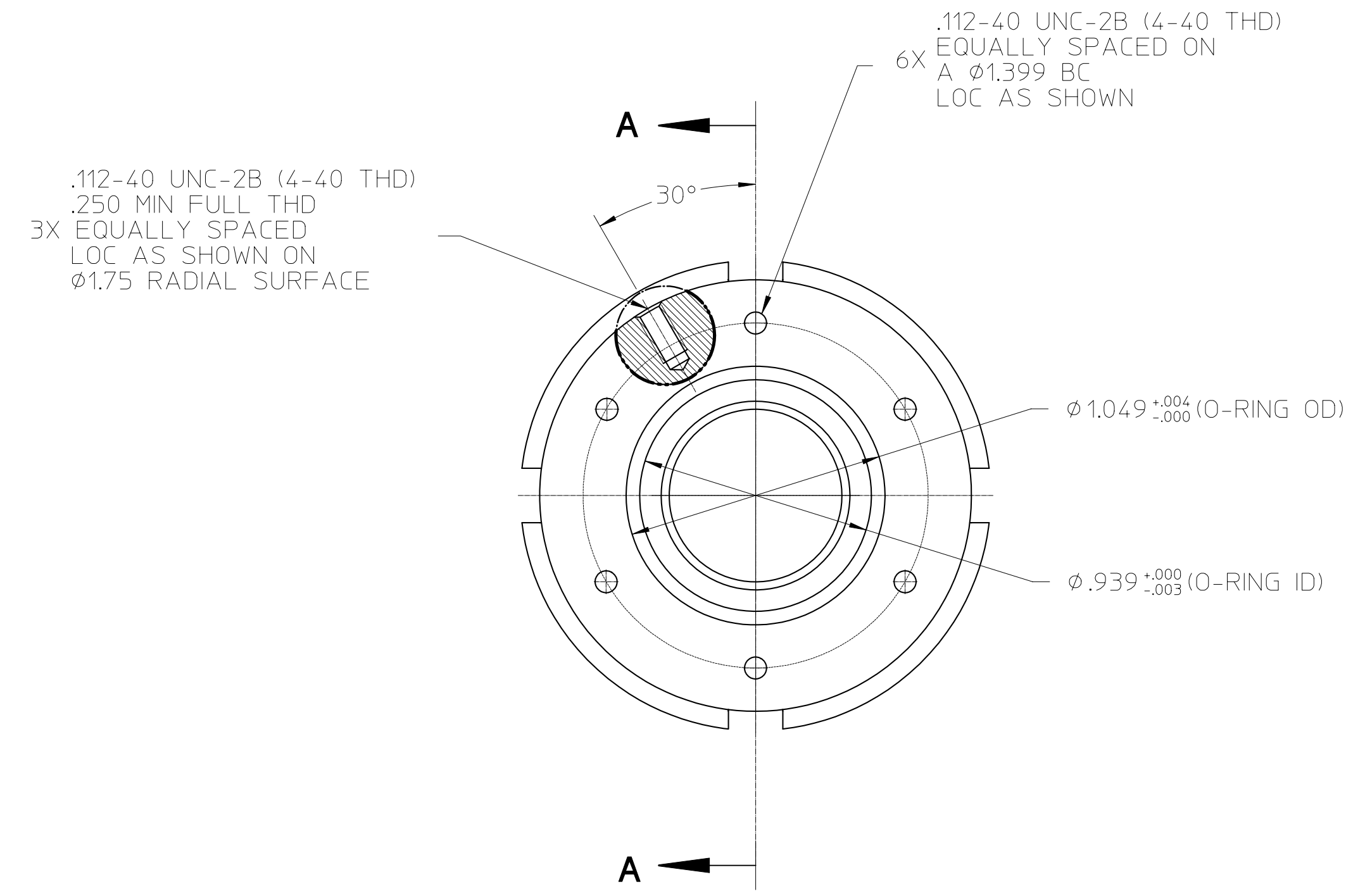
REVISIONS				
No.	ZONE	ECN	CHANGE	DATE
3				



**DETAIL 1**  
SCALE 10:1



**SECTION A-A**



**NOTES:**

- UNLESS OTHERWISE SPECIFIED BREAK ALL SHARP EDGES .005 - .015
- SCRIBE SURFACE 1; "014-0530"  
SURFACE 2; "12.3cc" (APPROX VOLUME) &  
SURFACE 3; "N0" FOLLOWED BY A SEQUENTIAL NUMBER ON EACH CAN USING INCREMENTS OF 1  
STARTING WITH THE NUMBER "N" (REFERENCE ORDER FOR VALUE OF "N") AND ENDING WITH  
["N" + QUANTITY ORDERED - 1] (ie: "NO 1", "NO 2", "NO 3"...)  
USING .125 HIGH CHARACTERS, LOCATED ON THE φ 1.91 RADIAL SURFACES AS INDICATED.

NOTE 3 NOT APPLICABLE WITHIN THESE AREAS.  
3. ALL SURFACES  $\sqrt{32}$  UNLESS OTHERWISE SPECIFIED

MATERIAL SPECIFICATION		DRAWING APPROVALS		UNLESS OTHERWISE SPECIFIED DIMENSIONS ARE IN INCHES TOLERANCES ARE: DECIMALS FRACTIONS XXX ±.005 ±.015 XX ±.01 ANGLES ±.5	 National Institute of Standards and Technology Technology Administration, U.S. Department of Commerce GAITHERSBURG, MD 20899	CENTER FOR NEUTRON RESEARCH	
MATERIAL	SIZE	ENGR	DATE			FOR	REV
ALUMINUM	6061-T6			DO NOT SCALE DRAWING <td></td> <td></td> <td></td>			
FORM		ENGR	DATE	THIRD ANGLE PROJECTION	12.3CC SAMPLE CAN ASSY (014-0529)	3	
<b>MODEL DATA</b>		<b>DRAWING DATA</b>			SIZE <b>D</b> DWG No. <b>014-0530</b>		
MODEL NAME	body_01.d	STATE	DATE		SCALE 2:1	RELEASE DATE	SHEET 1 of 1
CREATOR	5/6/03 12:00 AM	VERSION	SHEETS		CALC. WT.	ACT. WT.	DIM. & TOL. PER ANSI Y14.5M-1982
		DATE	1				
DRAWN	client	DATE	4/5/05 9:58 AM	ENGINEER			
LAST UPDATE BY	client	DATE	4/13/05 11:59 AM	PHONE #	(301) 975-5139		