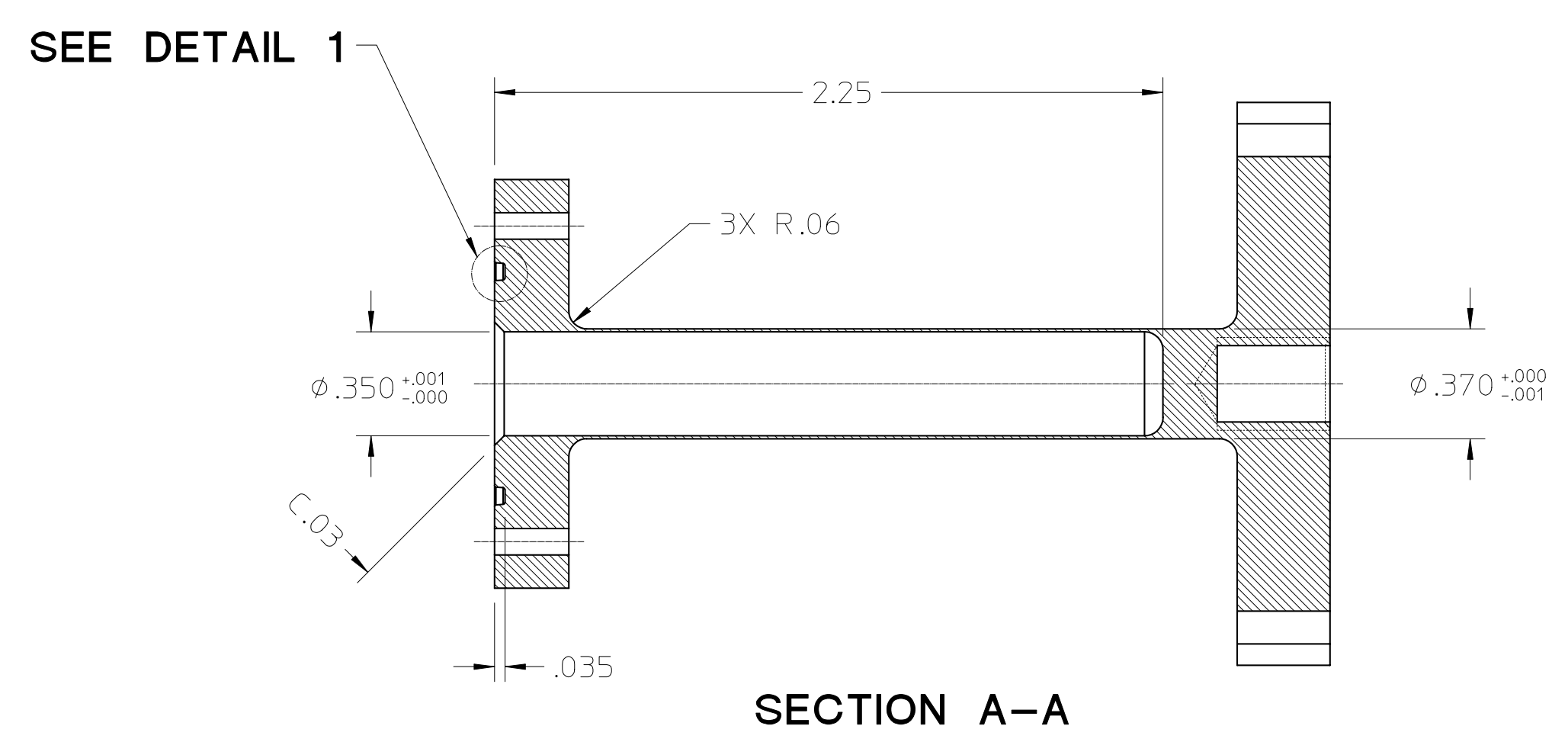
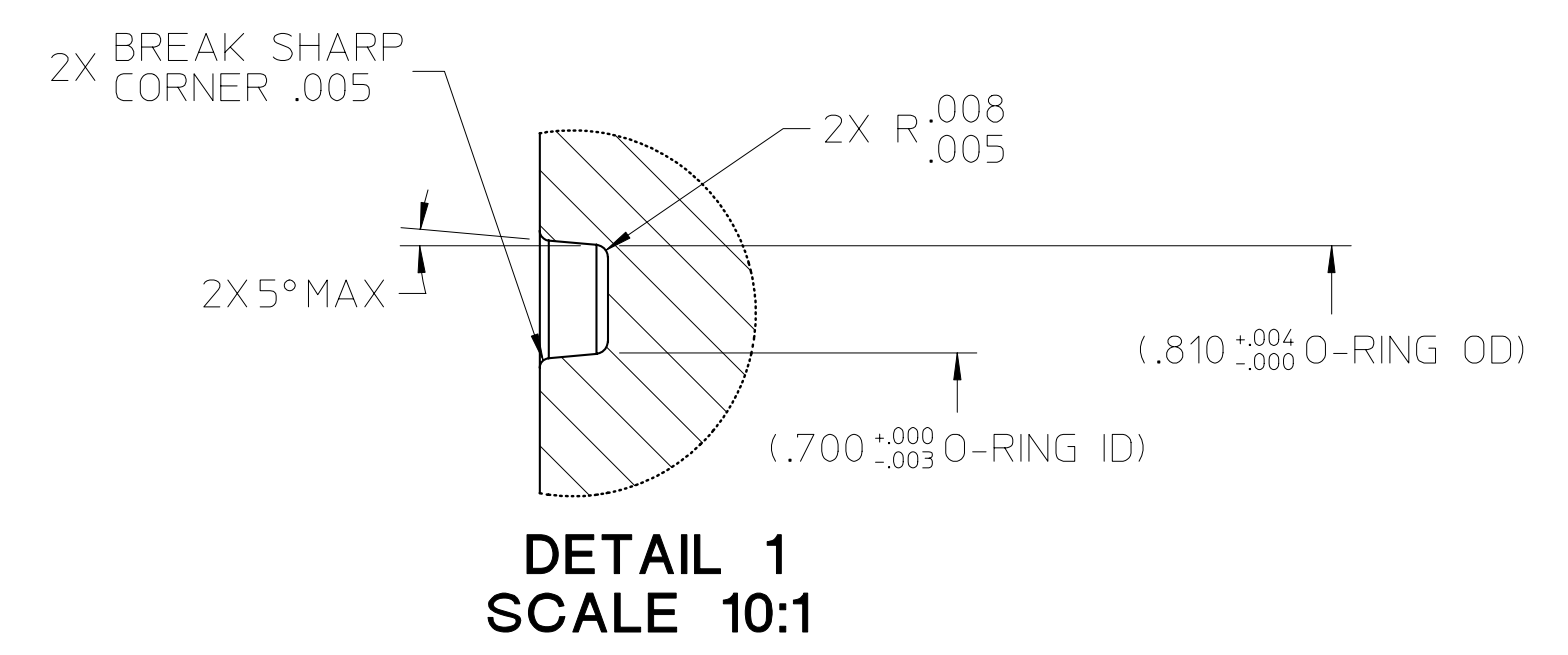
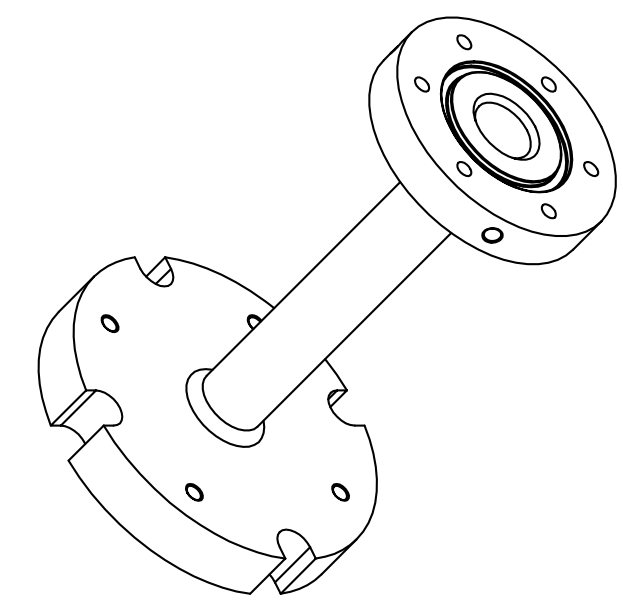
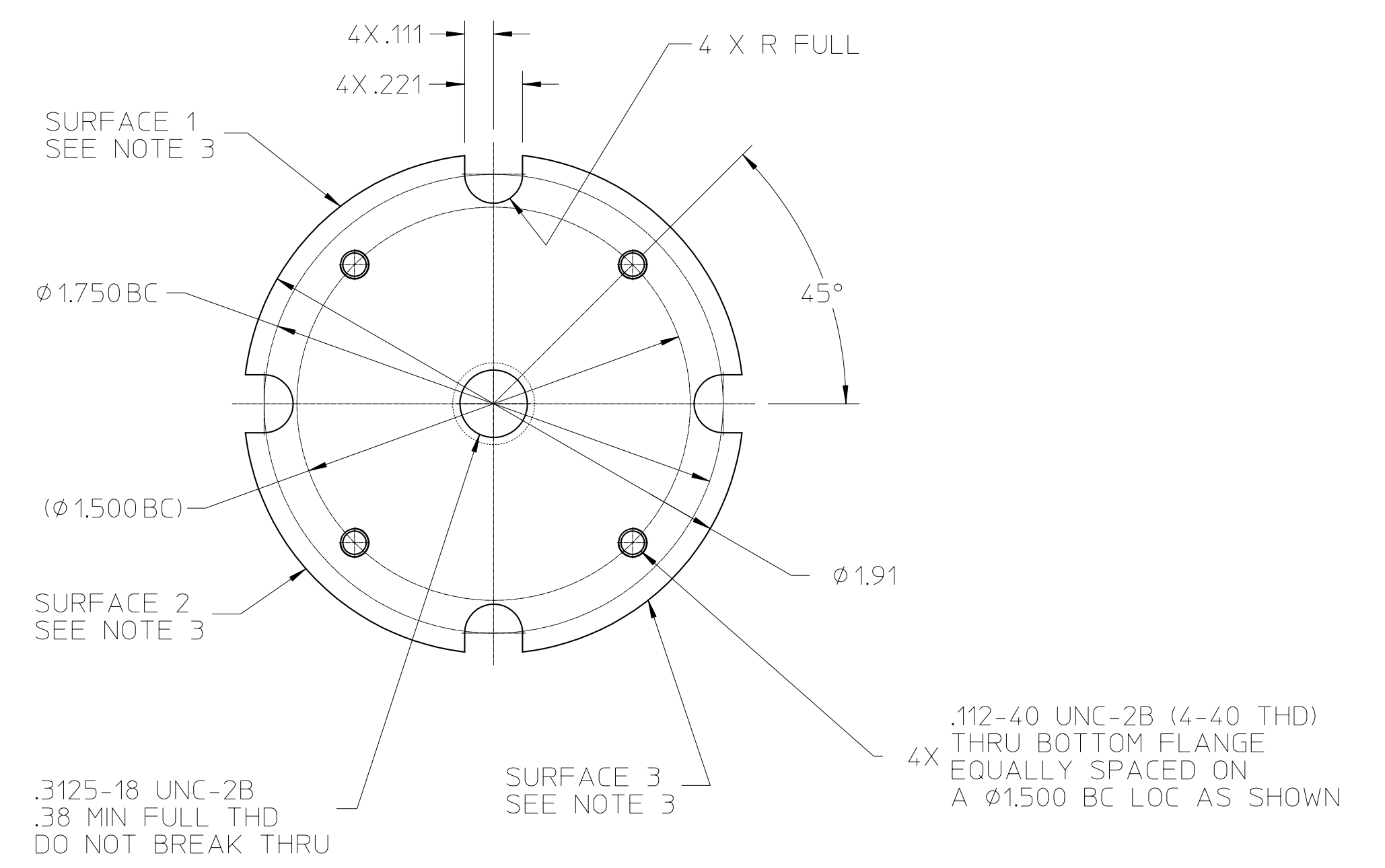
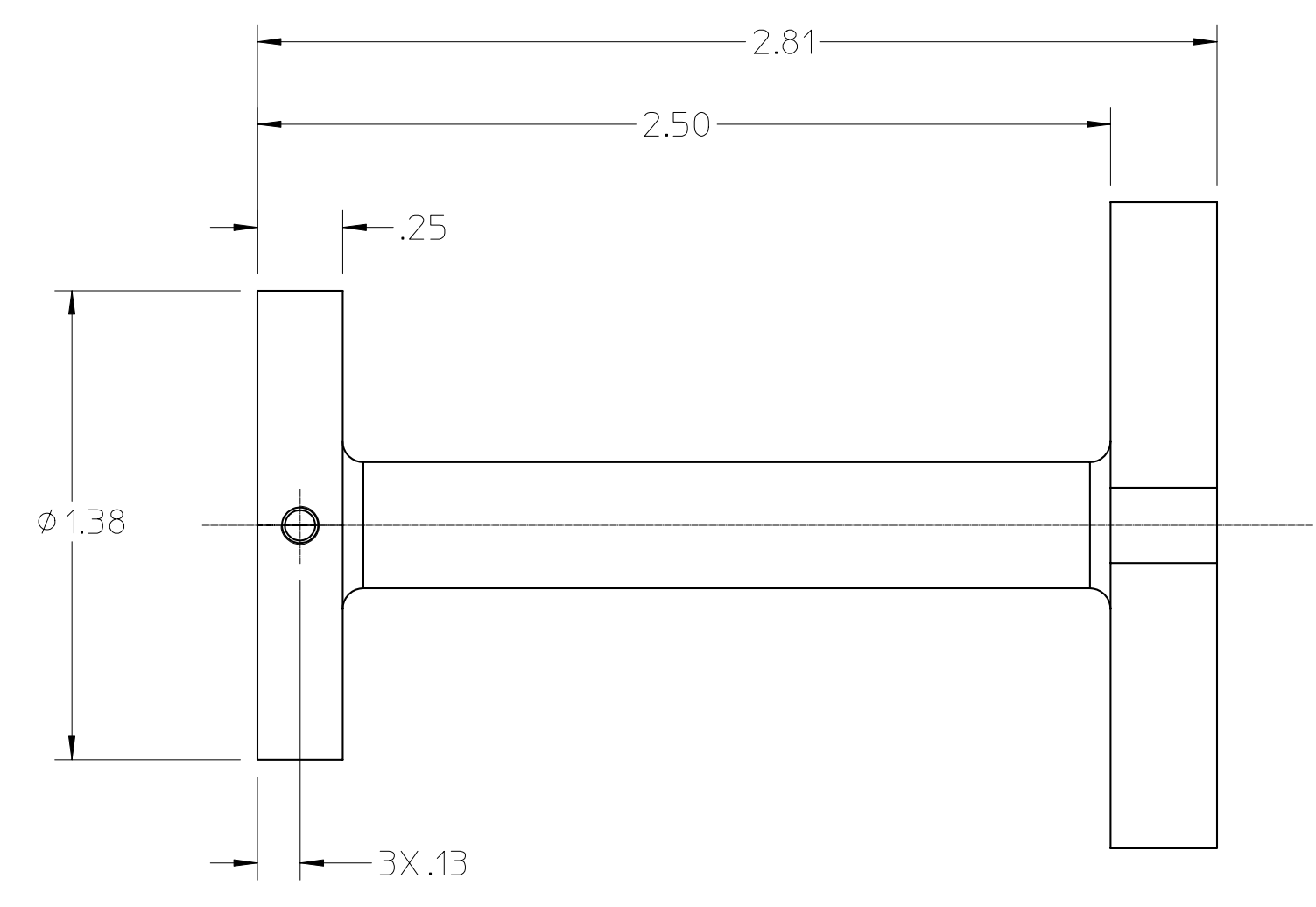
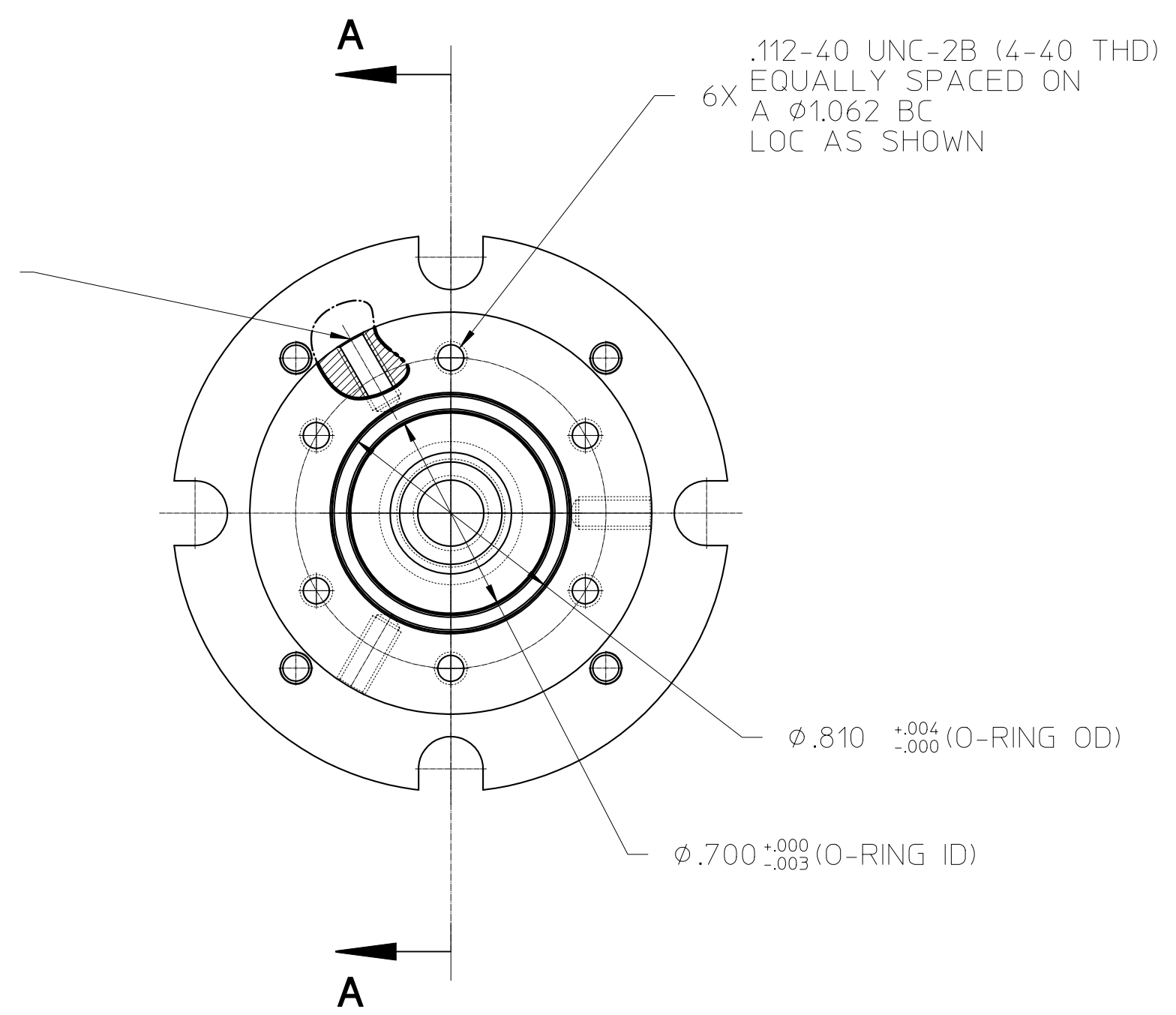


| REVISIONS |      |     |        |      |
|-----------|------|-----|--------|------|
| No.       | ZONE | ECN | CHANGE | DATE |
| 2         |      |     |        |      |



.112-40 UNC-2B (4-40 THD)  
.250 MIN FULL THD  
3X EQUALLY SPACED  
LOC AS SHOWN ON  
 $\phi 1.38$  RADIAL SURFACE



- NOTES:
- UNLESS OTHERWISE SPECIFIED BREAK ALL SHARP EDGES .005 - .015
  - SCRIBE, SURFACE 1; "014-0525"  
SURFACE 2; "3.1cc" (APPROX VOLUME) &  
SURFACE 3; "NO" FOLLOWED BY A SEQUENTIAL NUMBER ON EACH CAN USING INCREMENTS OF 1  
STARTING WITH THE NUMBER "N" (REFERENCE ORDER FOR VALUE OF "N") AND ENDING WITH  
["N" + QUANTITY ORDERED - 1] (ie: "NO 1", "NO 2", "NO 3"...)  
USING .125 HIGH CHARACTERS, LOCATED ON THE  $\phi 1.91$  RADIAL SURFACES AS INDICATED.  
NOTE 3 NOT APPLICABLE WITHIN THESE AREAS.
  - ALL SURFACES 32 UNLESS OTHERWISE SPECIFIED

| MATERIAL SPECIFICATION           |                 | DRAWING APPROVALS |                  | UNLESS OTHERWISE SPECIFIED<br>DIMENSIONS ARE IN INCHES<br>TOLERANCES ARE:<br>DECIMALS FRACTIONS<br>XXX ±.005 ±.015<br>XX ±.01<br>ANGLES ±5 | NIST<br>National Institute of Standards and Technology<br>Technology Administration, U.S. Department of Commerce | CENTER FOR NEUTRON RESEARCH<br>100 BUREAU DRIVE<br>GAITHERSBURG, MD 20899 |  |
|----------------------------------|-----------------|-------------------|------------------|--------------------------------------------------------------------------------------------------------------------------------------------|------------------------------------------------------------------------------------------------------------------|---------------------------------------------------------------------------|--|
| MATERIAL                         | SIZE            | ENGR              | DATE             |                                                                                                                                            |                                                                                                                  |                                                                           |  |
| ALUMINUM 6061-T6                 |                 |                   |                  |                                                                                                                                            |                                                                                                                  |                                                                           |  |
| FORM                             | SIZE            | ENGR              | DATE             |                                                                                                                                            |                                                                                                                  |                                                                           |  |
| MODEL DATA                       |                 | DRAWING DATA      |                  | DO NOT SCALE DRAWING                                                                                                                       |                                                                                                                  |                                                                           |  |
| MODEL NAME                       | client          | STATE             | DATE             | THIRD ANGLE PROJECTION                                                                                                                     |                                                                                                                  |                                                                           |  |
| CREATOR                          | 5/6/03 12:00 AM | VERSION           | 2                |                                                                                                                                            |                                                                                                                  |                                                                           |  |
| DATE                             | 5/6/03 12:00 AM | DATE              | 4/11/05 4:23 PM  |                                                                                                                                            |                                                                                                                  |                                                                           |  |
| LAST UPDATE BY                   | client          | DATE              | 4/11/05 4:23 PM  | ENGINEER                                                                                                                                   |                                                                                                                  |                                                                           |  |
|                                  |                 | DATE              | 4/13/05 11:49 AM | PHONE #                                                                                                                                    | (301) 975-5139                                                                                                   |                                                                           |  |
| FOR                              |                 | SCALE             |                  | RELEASE DATE                                                                                                                               |                                                                                                                  | SHEET                                                                     |  |
| 3.1CC SAMPLE CAN ASSY (014-0524) |                 | 2:1               |                  |                                                                                                                                            |                                                                                                                  | 1 of 1                                                                    |  |
| D                                |                 | 014-0525          |                  | DIM. & TOL. PER ANSI Y14.5M-1982                                                                                                           |                                                                                                                  |                                                                           |  |